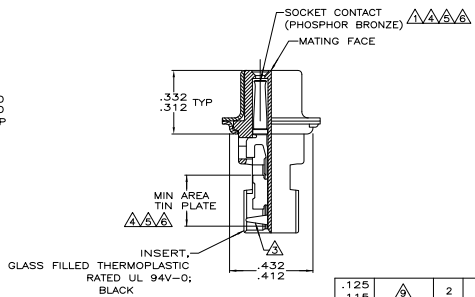
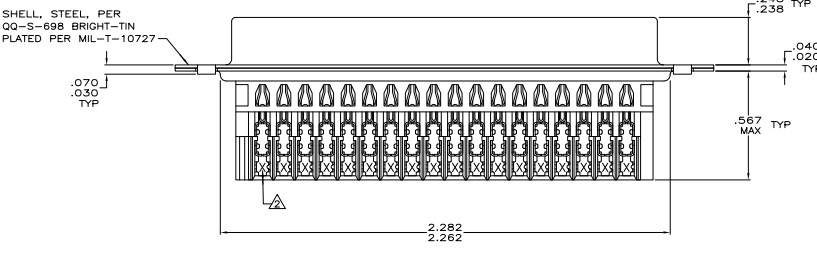
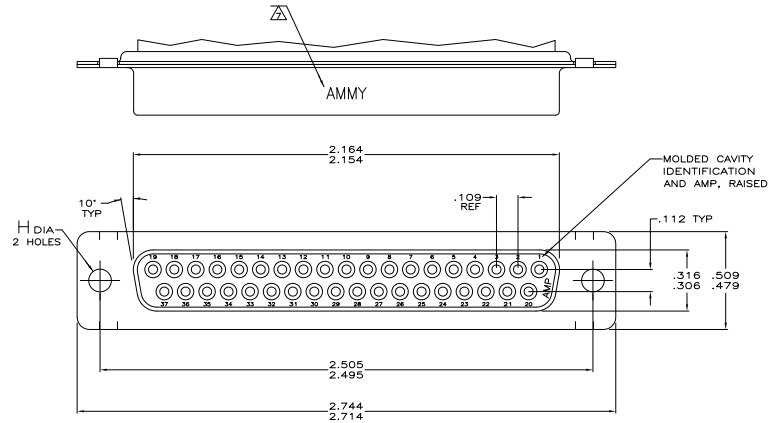


THIS DRAWING IS UNPUBLISHED
 ALL RIGHTS RESERVED

REV	DATE	DESCRIPTION	BY	CHK
00				
01		REVISED PER EDD-11-004835	11MM11	RK HMR



- △ HOUSING FULLY LOADED WITH CONTACTS.
- △ NUMBER ON CONTACT INDICATES WIRE RANGE.
- △ CONTACT INSULATION RANGE: .060 MAXIMUM O.D.
- △ .000030 GOLD ON MATING END FOR .100 MIN LENGTH. .000100-.000200 BRIGHT TIN OR BRIGHT TIN-LEAD IN AREA SHOWN. .000050 NICKEL UNDERPLATE ON ENTIRE CONTACT.
- △ .000001 MIN GOLD ON MATING END FOR .100 MIN LENGTH. .000100-.000200 BRIGHT TIN OR BRIGHT TIN-LEAD IN AREA SHOWN. .000030 NICKEL UNDERPLATE ON ENTIRE CONTACT.
- △ .000050 MIN GOLD ON MATING END FOR .100 MIN LENGTH. .000100-.000200 BRIGHT TIN OR BRIGHT TIN-LEAD IN AREA SHOWN. .000050 MIN NICKEL UNDERPLATE ON ENTIRE CONTACT.
- △ SPECIAL DATE CODE IN THIS APPROXIMATE AREA. A: MM = MONTH; Y = LAST DIGIT OF YEAR.
- △ .000030 GOLD ON MATING END FOR .100 MIN LENGTH. .000100-.000200 MATTE TIN IN AREA SHOWN. .000050 NICKEL UNDERPLATE ON ENTIRE CONTACT.
- △ GOLD FLASH ON MATING END FOR .100 MIN LENGTH. .000100-.000200 MATTE TIN IN AREA SHOWN. .000030 MIN NICKEL UNDERPLATE ON ENTIRE CONTACT.

	.125	△	2	#22-26	1-745497-7
	.115	△	1	#26-30	1-745497-6
	.125	△	2	#22-26	1-745497-5
	.115	△	2	#22-26	1-745497-3
	.125	△	3	#20-22	1-745497-2
	.115	△	2	#22-26	1-745497-1
	.146	△	1	#26-30	1-745497-0
	.156	△	3	#20-22	745497-9
	.146	△	2	#22-26	745497-8
	.146	△	1	#26-30	745497-7
	.156	△	3	#20-22	745497-6
	.125	△	2	#22-26	745497-5
	.115	△	1	#26-30	745497-4
	.125	△	3	#20-22	745497-3
	.115	△	2	#22-26	745497-2
	.125	△	1	#26-30	745497-1

THIS DRAWING IS A CONTROLLED DOCUMENT.

REVISIONS: H CONTACT FINISH, WIRE RANGE, PART NUMBER

DESIGNED BY	108-40011	DATE	11-18-97
DESIGNED BY	114-40002	DATE	

RECEPTACLE ASSEMBLY, METAL SHELL, SIZE 4, 37 POSITION, SERIES HSE-20 FOR MASS TERMINATION

100779 (C)=745497