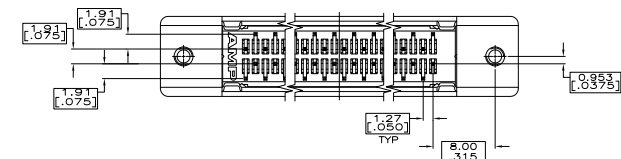
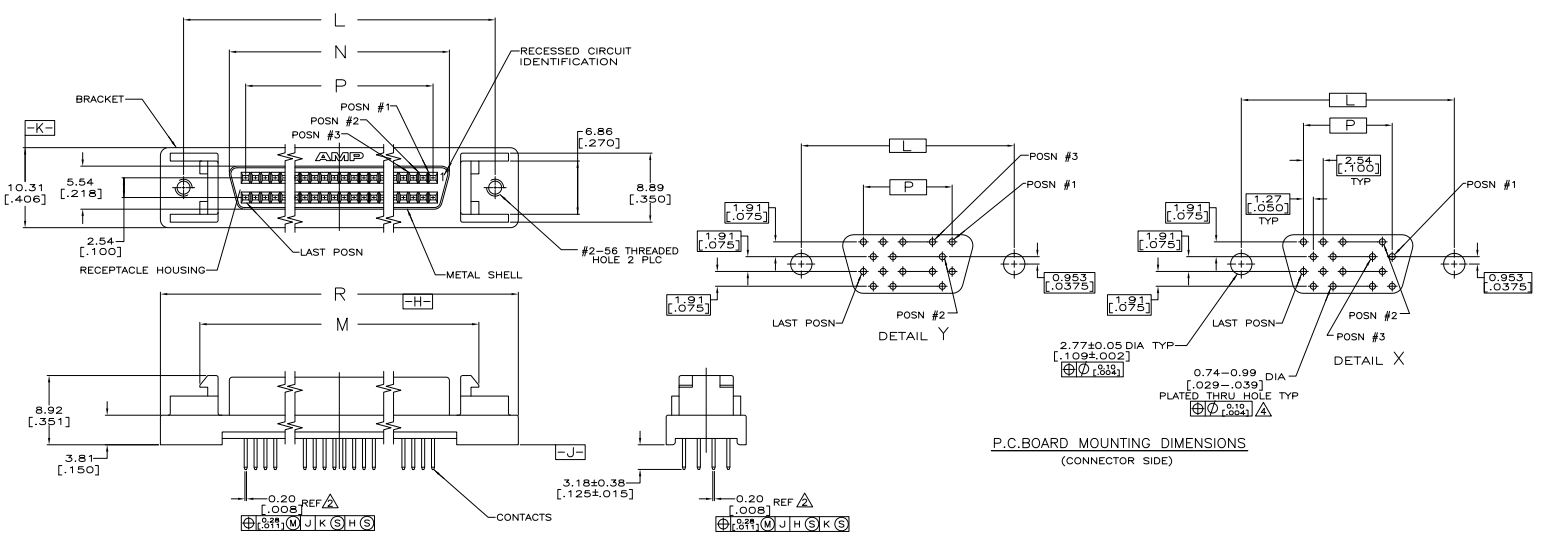


THIS DRAWING IS UNPUBLISHED
 ALL RIGHTS RESERVED

REV	DATE	DESCRIPTION	BY	APP
00	11MAY11	REVISED PER EDD-11-004835	RK	HMR



- △ FINISH: CONTACTS - EITHER GOLD PLATED 0.76μm [.00030] MIN ON MATING END OR GOLD FLASH OVER PALLADIUM NICKEL 0.76μm [.00030] MIN TOTAL ON MATING END, 3.05μm [.000120] MIN TIN-LEAD PLATED ON SOLDER LEAD, ALL OVER 1.27μm [.000050] MIN NICKEL UNDERPLATE.
- SHELL - 5.08μm [.000200] MIN NICKEL OVER 1.27μm [.000050] MIN COPPER.
- BRACKET - NICKEL PLATED.
- △ POSITION TOLERANCE APPLIES AT TIP ONLY.
- △ MATERIAL: CONTACTS - PHOSPHOR BRONZE. HOUSING - UL V-0 RATED THERMOPLASTIC COLOR BLACK. BRACKET - ZINC. SHELL - CARBON STEEL.
- △ ACTUAL HOLE SIZE USED WILL DEPEND ON TRACE ROUTING REQUIREMENTS BETWEEN HOLES AND CONNECTOR PLACEMENT TECHNIQUE.
- △ OBSOLETE PART NUMBER.
- △ OBSOLETE PARTS: OBSOLETE CIS STREAMLINING PER D.RENAUD/D.SINISI

6 OBSOLETE

X	96.90 [3.815]	74.93 [2.950]	79.15 [3.116]	86.74 [3.415]	90.93 [3.580]	120	△ 1-749069-0
X	84.20 [3.315]	62.23 [2.450]	66.45 [2.616]	74.04 [2.915]	78.23 [3.080]	100	749069-9
X	71.50 [2.815]	49.53 [1.950]	53.75 [2.116]	61.34 [2.415]	65.53 [2.580]	80	749069-8
X	63.88 [2.515]	41.91 [1.650]	46.13 [1.816]	53.72 [2.115]	57.91 [2.280]	68	749069-7
X	58.80 [2.315]	36.83 [1.450]	41.05 [1.616]	48.64 [1.915]	52.83 [2.080]	60	△ 749069-6
Y	52.45 [2.065]	30.48 [1.200]	34.70 [1.366]	42.29 [1.665]	46.48 [1.830]	50	749069-5
X	46.10 [1.815]	24.13 [.950]	28.34 [1.116]	35.94 [1.415]	40.13 [1.580]	40	△ 749069-4
X	38.48 [1.515]	16.51 [.650]	20.73 [.816]	28.32 [1.115]	32.51 [1.280]	28	△ 749069-3
Y	37.21 [1.465]	15.24 [.600]	19.46 [.766]	27.05 [1.065]	31.24 [1.230]	26	749069-2
X	33.40 [1.315]	11.43 [.450]	15.65 [.616]	23.24 [.915]	27.43 [1.080]	20	749069-1
PWB PATTERN	R	P	N	M	L	NO. OF POSN	PART NUMBER

THIS DRAWING IS A CONTROLLED DOCUMENT. DATE: 11-17-08

INCHES: 11-17-08

MILLIMETERS: 12-17-08

TE Connectivity

RECEPTACLE ASSEMBLY, SHIELDED/VERTICAL MOUNTED, AMPHIMATE, 250D SERIES

SIZE: 4.1

REV: 1

DATE: 11-17-08

BY: A100779

CHKD: G=749069

CUSTOMER DRAWING