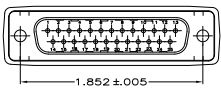
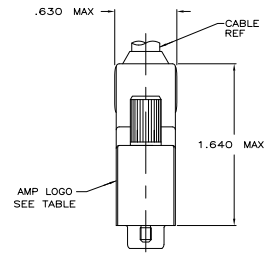
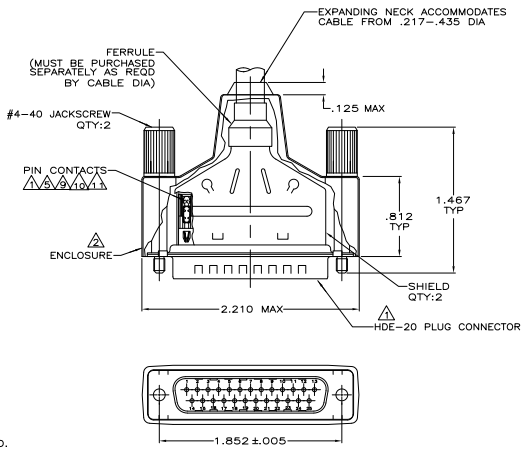


THIS DRAWING IS UNPUBLISHED  
 UNLESS OTHERWISE INDICATED  
 ALL RIGHTS RESERVED

REV	DATE	DESCRIPTION	BY	CHK
00				
V2		REVISED PER EDD-11-004835	11MR11	RK HMR



- ▲ PLUG CONNECTOR FULLY LOADED WITH CONTACTS. ALL OTHER PARTS ARE SHIPPED UNASSEMBLED. EACH PART INDIVIDUALLY BULK PACKED.
- ▲ FLAME RETARDANT 94V-0 RATED, POLYOLEFIN OR PVC, BLACK.
- ▲ INSERT: FLAME RETARDANT 94V-0 RATED, GLASS-FILLED, NYLON OR POLYESTER, BLACK.
- ▲ SHELLS & SHIELDS: STEEL PER ASTM A109.
- ▲ CONTACTS: PHOSPHOR BRONZE PER QQ-B-750.
- ▲ GOLD PLATING PER MIL-G-45204, NICKEL PLATING PER QQ-N-290, TIN PLATING PER MIL-T-10727, ZINC PLATING PER B633, TYPE II, CLASS SCI, BLACK CHROMATE.
- ▲ SHELLS & SHIELDS: TIN PLATED.
- ▲ JACKSCREWS: ZINC PHOSPHATE COATING, BLACK.
- ▲ CONTACTS PLATED GOLD FLASH FOR A LENGTH OF .150 MIN FROM MATING END, .000100-.000200 BRIGHT TIN OR BRIGHT TIN-LEAD IN WIRE TERMINATION AREA, ALL OVER .000050 MIN NICKEL UNDERPLATE ON ENTIRE CONTACT.
- ▲ PLATED WITH .000030 MIN GOLD FOR LENGTH OF .150 MIN FROM MATING END, WITH POINT OF MEASUREMENT .075 FROM MATING END OF CONTACT, .000100-.000200 TIN OR TIN LEAD ON TERMINATION END, ALL OVER .000050 MIN NICKEL ON ENTIRE CONTACT.
- ▲ NUMBER ON CONTACT INDICATES WIRE RANGE.
- ▲ OBSOLETE PART NUMBER.
- ▲ JACKSCREWS: ZINC ALLOY.
- ▲ CONTACTS GOLD PLATED FOR A LENGTH OF .150 MIN FROM MATING END, .000030 MIN GOLD IN MATED AREA, .000100-.000200 MATTE TIN IN WIRE TERMINATION AREA, ALL OVER .000050 MIN NICKEL UNDERPLATE ON ENTIRE CONTACT.  
OR  
CONTACTS GOLD PLATED FOR A LENGTH OF .150 MIN FROM MATING END, GOLD FLASH OVER PALLADIUM-NICKEL, .000030 MIN TOTAL IN MATED AREA, .000100-.000200 MATTE TIN IN WIRE TERMINATION AREA, ALL OVER .000050 MIN NICKEL UNDERPLATE ON ENTIRE CONTACT.
- ▲ CONTACTS PLATED GOLD FLASH FOR A LENGTH OF .150 MIN FROM MATING END, .000100-.000200 MATTE TIN IN WIRE TERMINATION AREA, ALL OVER .000050 MIN NICKEL UNDERPLATE ON ENTIRE CONTACT.
- ▲ OBSOLETE PARTS: OBSOLETE CIS STREAMLINING PER D.RENAUD/D.SINISI

REV	DATE	DESCRIPTION	BY	CHK	PART NUMBER
1	20-22				1-747948-9
2	22-26				1-747948-8
1	26-30				1-747948-7
2	22-26				1-747948-6
1	26-30				1-747948-5
3	20-22				1-747948-2
2	22-26				1-747948-1
1	26-30				1-747948-0
3	20-22				747948-9
2	22-26				747948-8
1	26-30				747948-7
SUPERCEDED					
SUPERCEDED BY 1-747948-8					
	3	20-22			747948-6
	2	22-26			747948-5
	1	26-30			747948-4
SUPERCEDED BY 1-747948-6					
	3	20-22			747948-3
	2	22-26			747948-2
	1	26-30			747948-1
SUPERCEDED BY 1-747948-5					

THIS DRAWING IS A CONTROLLED DOCUMENT.

REVISED PER EDD-11-004835

DATE: 11-17-21

BY: 11MR11

CHK: RK

DESCRIPTION: SHIELDING ENCLOSURE KIT, PLUG, SIZE 3, 25 POSN, AMPLETYPE HDE-20

REVISED PER EDD-11-004835

DATE: 11-17-21

BY: 11MR11

CHK: RK

DESCRIPTION: SHIELDING ENCLOSURE KIT, PLUG, SIZE 3, 25 POSN, AMPLETYPE HDE-20

REVISED PER EDD-11-004835

DATE: 11-17-21

BY: 11MR11

CHK: RK

DESCRIPTION: SHIELDING ENCLOSURE KIT, PLUG, SIZE 3, 25 POSN, AMPLETYPE HDE-20