

4

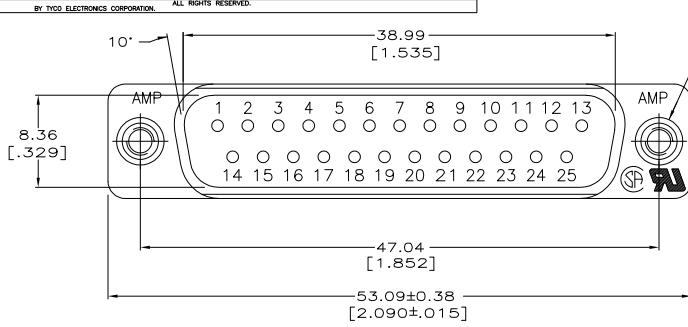
3

2

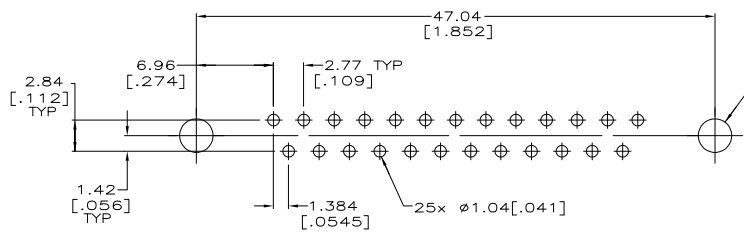
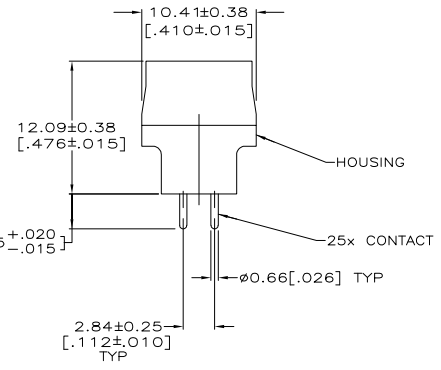
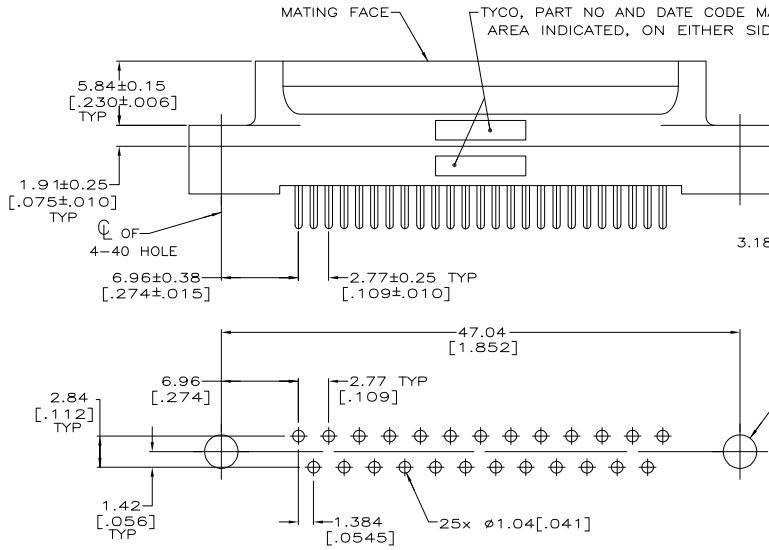
1

THIS DRAWING IS UNPUBLISHED. RELEASED FOR PUBLICATION. BY TYCO ELECTRONICS CORPORATION. ALL RIGHTS RESERVED.

LOC	DIST	REVISIONS					
GP	00	F	LR	DESCRIPTION	DATE	BY	APP'D
		A		REVISED PER ECO-06-026339	18/DEC/06	ZMR	EDB



△ HOUSING: BLACK POLYESTER, UL 94V-0 RATED;
 CONTACTS: BRASS;
 INSERTS: BRASS;
 △ CONTACTS: GOLD PLATED FOR A LENGTH OF 3.81 [150] MIN FROM MATING END, 0.76µm [0.00030] MIN GOLD IN MATED AREA, 2.54µm [0.000100] MIN TIN ON OPPOSITE END, ALL OVER 1.27µm [0.000050] MIN NICKEL
 -OR-
 GOLD FLASH OVER PALLADIUM NICKEL PLATED FOR LENGTH OF 3.81 [150] MIN FROM MATING END, 0.76µm [0.00030] MIN PALLADIUM NICKEL IN MATED AREA, 2.54µm [0.000100] MIN TIN ON OPPOSITE END, ALL OVER 1.27µm [0.000050] MIN NICKEL.



RECOMMENDED PC BOARD MOUNTING DIMENSIONS

COPYRIGHT 2005 TYCO ELECTRONICS CORP ALL RIGHTS RESERVED

5745053-2 PART NO

THIS DRAWING IS A CONTROLLED DOCUMENT.		DRN	C. PETERS	1252POS	 Tyco Electronics Corporation Harrisburg, PA 17105-3608
DIMENSIONS: mm [INCHES]		CHK	S. BOLASH	1252POS	
TOLERANCES UNLESS OTHERWISE SPECIFIED:		APP'D	M. WALMSLEY	1252POS	NAME
0 P.L.C.	± .005	PRODUCT SPEC	108-40025	APPLICATION SPEC	SIZE
1 P.L.C.	± .010	WEIGHT	-	WEIGHT	CAGE CODE
2 P.L.C.	± .015 (200)	FINISH	-	FINISH	DRAWING NO
3 P.L.C.	± .020	MATERIAL	△	MATERIAL	RESTRICTED TO
4 P.L.C.	± .030	FINISH	△	FINISH	
MATERIAL		CUSTOMER DRAWING		SCALE	4:1
FINISH		CUSTOMER DRAWING		SHEET	1 of 1
MATERIAL		CUSTOMER DRAWING		REV	A

AMP 1471-9 REV 31MM2000

5745053

A