

4

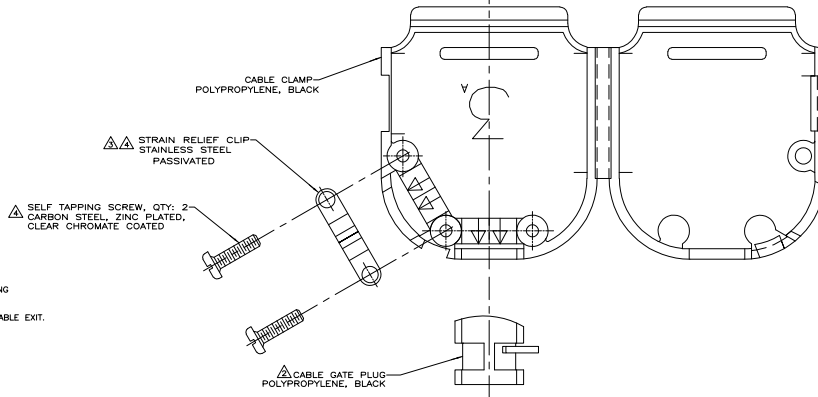
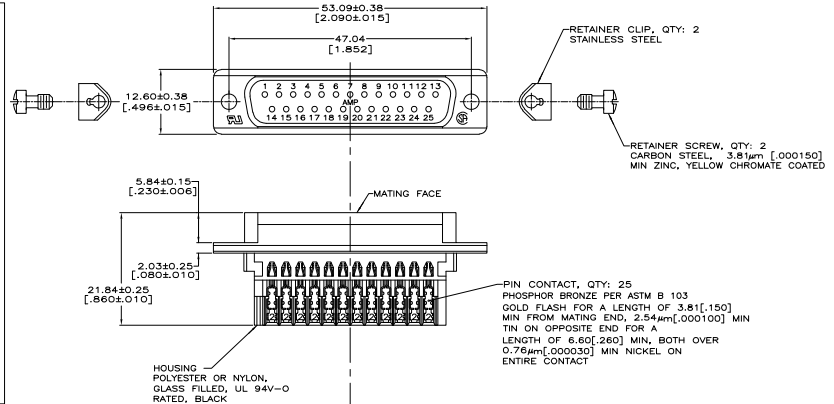
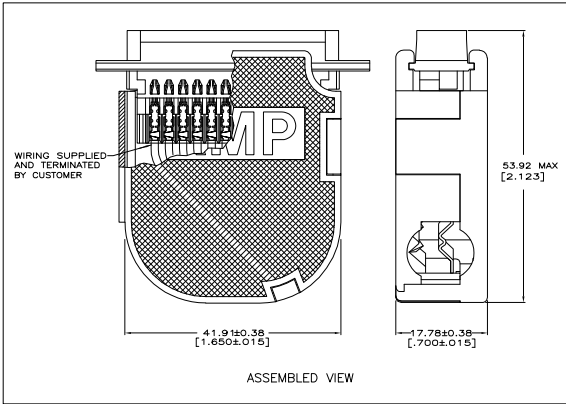
3

2

1

THIS DRAWING IS UNPUBLISHED. RELEASED FOR PUBLICATION
 BY TYCO ELECTRONICS CORPORATION. ALL RIGHTS RESERVED.

LOC	DIST	REVISIONS			
F	LTR	DESCRIPTION	DATE	BY	APP
GP	00				
	A	REVISED PER EC 0513-0269-05	21MAR06	JG	CR



- CONTACTS ACCEPT 22-26 AWG RANGE.
- CABLE GATE PLUG TO BE PLACED IN CABLE EXIT NOT BEING USED.
- STRAIN RELIEF CLIP CAN BE REVERSED FOR PROPER INSTALLATION, DEPENDING ON SIZE OF CABLE DIAMETER.
- STRAIN RELIEF CLIP AND SELF TAPPING SCREWS MAY BE USED AT EITHER CABLE EXIT.
- CABLE DIAMETER RANGE = 4.58-11.68 [180-460].

749809-9
 PART NUMBER

THIS DRAWING IS A CONTROLLED DOCUMENT.		BY: J. VASELA - 12-22-04	Tyco Electronics Corporation Harrisburg, Pa 17105-3608
		CHK: J. GERACE - 12-22-04	
DIMENSIONS: mm [INCHES]		APPC: M. WALMSLEY - 12-22-04	PLUG KIT, UNASSEMBLED, SIZE 3, 25 POSITION, AMPLIMITE HDE-20
TOLERANCES UNLESS OTHERWISE SPECIFIED:		PRODUCT SPEC: 108-40011	
Ø	PLC ±	APPLICATION SPEC: 114-40002	RESTRICTED TO
1	PLC ±	WEIGHT: -	SIZE CASE CODE DRAWING NO.
2	PLC ±	FINISH: -	A2 00779 C=749809-9
3	PLC ±		SCALE: 3:1 SHEET 1 OF 1 REV A
4	PLC ±		
MATERIAL: SEE CALLOUTS		CUSTOMER DRAWING	

AMP 1471-9 REV 31MMR2000

749809-9

A