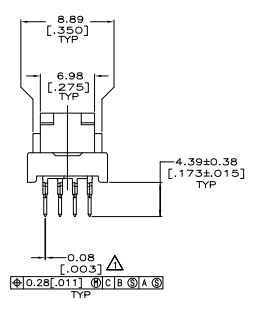
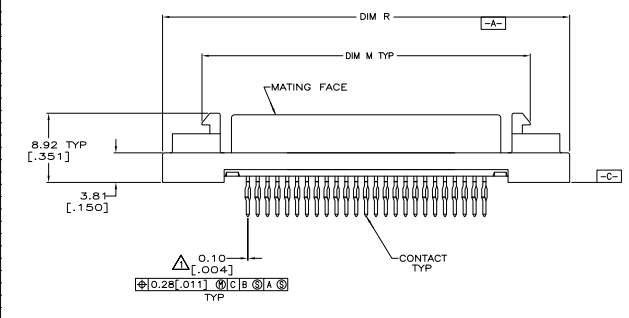
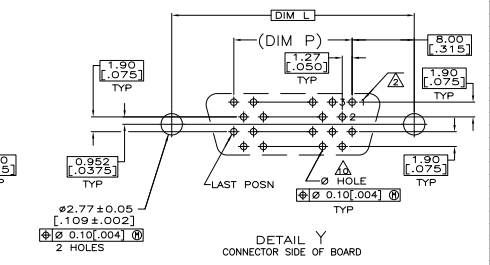
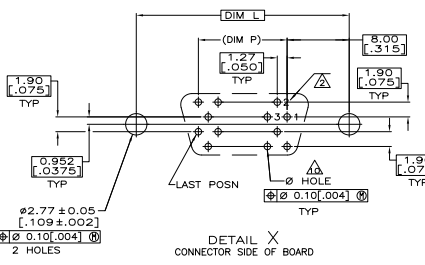
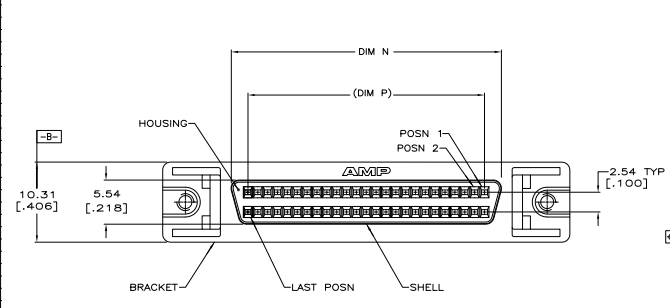
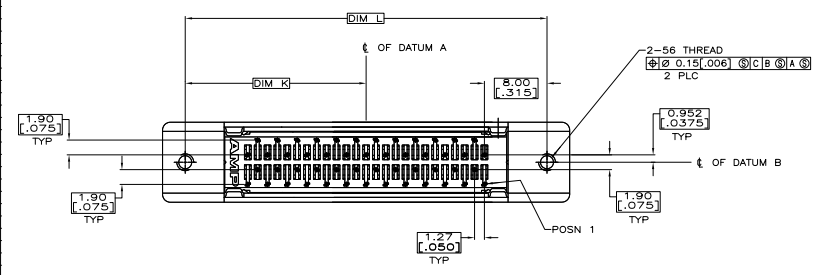


REV	DATE	DESCRIPTION	BY	CHK	APP
00					
01		REVISED PER EDD-11-000033			



- △ POSITION TOLERANCE APPLIES AT CONTACT TIP.
- △ POSITION NUMBERS SHOWN FOR REFERENCE ONLY.
- △ HOUSING: POLYPHTHALAMIDE, BLACK, UL 94-V0 RATED.
- △ SHELL: CARBON STEEL.
- △ CONTACTS: PHOSPHOR BRONZE.
- △ BRACKET: ZINC.
- △ SHELL: 5.08μm [0.000200] MIN NICKEL OVER 1.27μm [0.000050] MIN COPPER.
- △ BRACKET: 3.81μm [0.000150] MIN NICKEL OVER 5.08μm [0.000200] MIN COPPER.
- △ CONTACTS: EITHER 0.76μm [0.000030] MIN GOLD PLATE OR GOLD FLASH OVER PALLADIUM NICKEL PLATE, 0.76μm [0.000030] MIN TOTAL, FOR A LENGTH OF 0.64 [0.025] MIN, 0.13 [0.005] MAX FROM MATING END, 1.27μm [0.000050] MIN TIN ON OPPOSITE END FOR A LENGTH OF 4.78 [0.188] MIN, ALL OVER 1.27μm [0.000050] MIN NICKEL UNDERPLATE.
- △ PC BOARD HOLE RECOMMENDATIONS:
 - A. HOLES SHOULD BE DRILLED WITH A 0.701 [0.0276] DRILL.
 - B. PC BOARD PLATING TO BE 7.62μm [0.000300] MIN TIN OVER 0.025-0.038 [0.0010-0.015] COPPER.
 - C. RECOMMENDED HOLE SIZE AFTER TIN PLATING IS 0.56-0.66 [0.022-0.026].



	96.90	74.93	79.15	86.74	90.93	45.47	120	1-5786554-0
PER DETAIL X	[3.815]	[2.950]	[3.116]	[3.415]	[3.580]	[1.790]	100	5786554-0
PER DETAIL X	84.20	62.23	66.45	74.04	78.23	39.12	100	5786554-7
PER DETAIL X	[3.315]	[2.450]	[2.616]	[2.915]	[3.080]	[1.540]	100	5786554-9
PER DETAIL X	63.88	41.91	46.13	53.72	57.91	28.96	68	5786554-8
PER DETAIL X	[2.515]	[1.650]	[1.816]	[2.115]	[2.280]	[1.140]	68	5786554-7
PER DETAIL Y	52.45	30.48	34.70	42.29	46.48	23.24	50	5786554-5
PER DETAIL Y	[2.065]	[1.200]	[1.366]	[1.665]	[1.830]	[.915]	50	5786554-5
PER DETAIL Y	37.21	15.24	19.46	27.05	31.24	15.62	26	5786554-2
PER DETAIL Y	[1.465]	[.600]	[.766]	[1.065]	[1.230]	[.615]	26	5786554-2
PER DETAIL X	33.40	11.43	15.65	23.24	27.43	13.72	20	5786554-1
PER DETAIL X	[1.315]	[.450]	[.616]	[.915]	[1.080]	[.540]	20	5786554-1

THIS DRAWING IS A CONTROLLED DOCUMENT.

REVISIONS: 01, 02, 03, 04, 05, 06, 07, 08, 09, 10, 11, 12, 13, 14, 15, 16, 17, 18, 19, 20, 21, 22, 23, 24, 25, 26, 27, 28, 29, 30, 31, 32, 33, 34, 35, 36, 37, 38, 39, 40, 41, 42, 43, 44, 45, 46, 47, 48, 49, 50, 51, 52, 53, 54, 55, 56, 57, 58, 59, 60, 61, 62, 63, 64, 65, 66, 67, 68, 69, 70, 71, 72, 73, 74, 75, 76, 77, 78, 79, 80, 81, 82, 83, 84, 85, 86, 87, 88, 89, 90, 91, 92, 93, 94, 95, 96, 97, 98, 99, 100.

TE Connectivity
 RECEPTACLE ASSEMBLY, SHIELD, VERTICAL, RAISED, ACTION PIN FOR .062 TO .093 THICK BO. ANPLATE. 000 SERIES

114-40029
 108-1228
 100779
 5786554