

4

3

2

1

THIS DRAWING IS UNPUBLISHED. RELEASED FOR PUBLICATION. ALL RIGHTS RESERVED.

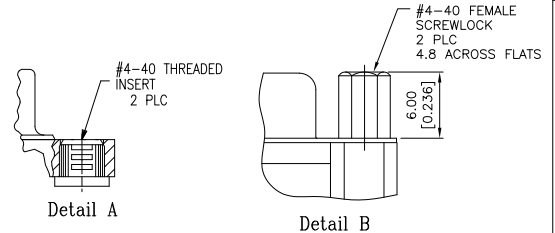
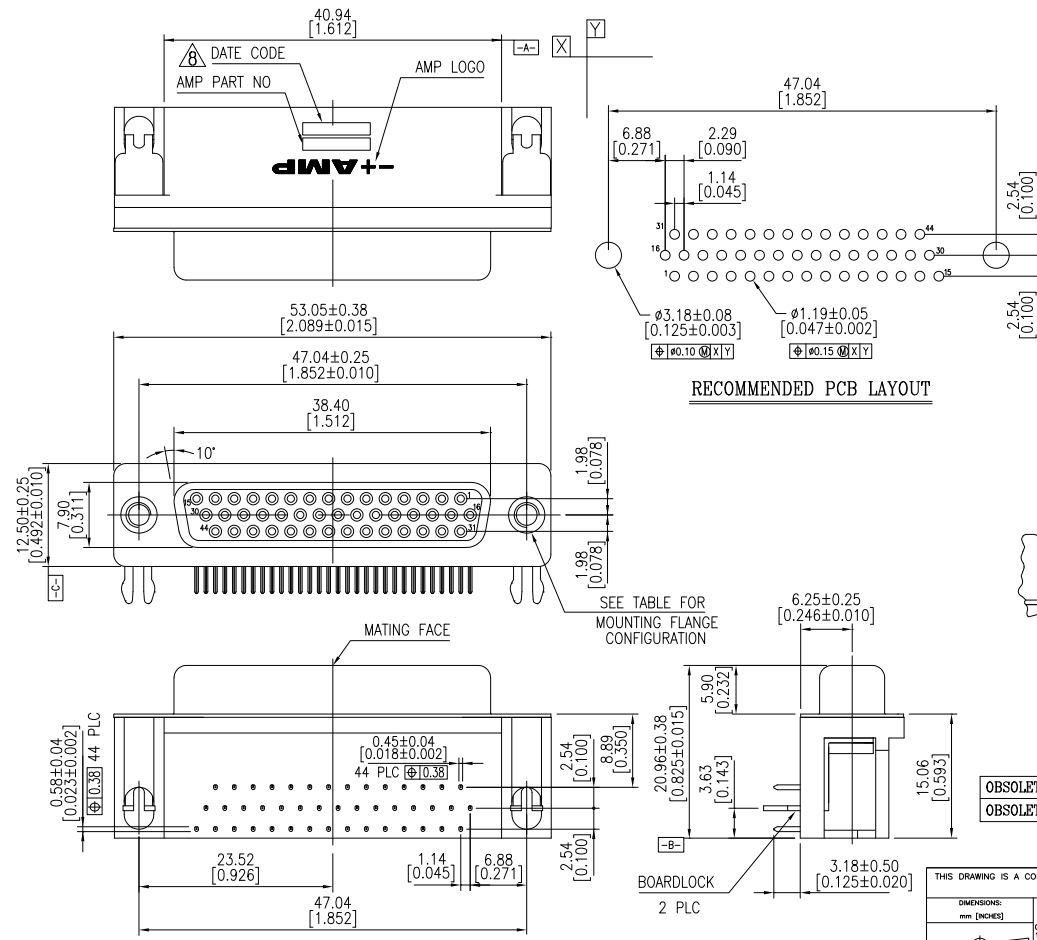
LOC	DIST	REVISIONS		DATE	BY	APP'D
GP	00	F	LR			
		A1		REVISED PER ECO-11-004835	11MAR11	RIK HMR

MATERIAL:

1. Housing: PBT, 30% G.F polyester, Black. (UL 94V-0 Rated)
2. Contact: Phos. Bronze.
3. Contact Plated: Gold Plated over 50u" Nickel underplated.
4. Solder Tail: Sn Plated 120u" over 50u" Nickel underplated.
5. Shell: Steel, Nickel Plated.
6. Boardlocks: Brass, Tin Plated 100u".
7. Screwlocks: Brass, Nickel Plated 30u".

⚠ Four digit date code in this format.

Year 01 45 Manufacturing Week



	Tray	Detail B	15 μ"	2-5748482-5
OBSOLETE	Tray	Detail A	Gold flash	2-5748482-4
OBSOLETE	Tray	Detail A	15 μ"	2-5748482-3
	Tray	Detail A	30 μ"	5748482-5
	Packaging	Mounting Flange	Contact Finish	Part No

THIS DRAWING IS A CONTROLLED DOCUMENT.

DIMENSIONS: mm [INCHES] 0 PLC ± 0.30 1 PLC ± 0.30 2 PLC ± 0.30 3 PLC ± 0.10 4 PLC ± 0.10 ANGLES ± °	TOLERANCES UNLESS OTHERWISE SPECIFIED: DIMENSIONS ± 0.10 DIMENSIONS ± 0.10 DIMENSIONS ± 0.10 DIMENSIONS ± 0.10 DIMENSIONS ± 0.10	DWG: J. GERACE 25FEB05 CHK: S. BOLASH 25FEB05 DWG: M. WALMSLEY PRODUCT SPEC:	TE TE Connectivity AMPLIMITE HD-22, 44 POSITION RECEPTACLE, RIGHT ANGLE
MATERIAL: -	FINISH: -	APPLICATION SPEC: -	SIZE: A2 CASE CODE: C=5748482 DRAWING NO: - RESTRICTED TO: -
CUSTOMER DRAWING			SCALE: 1:1 SHEET: 1 of 1 REV: A1