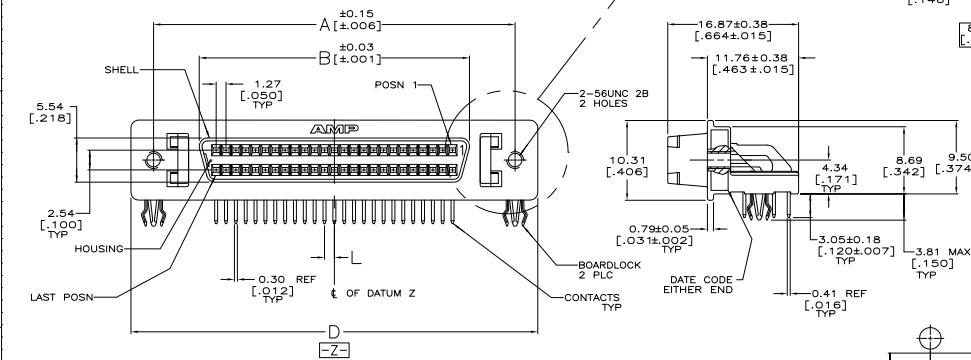
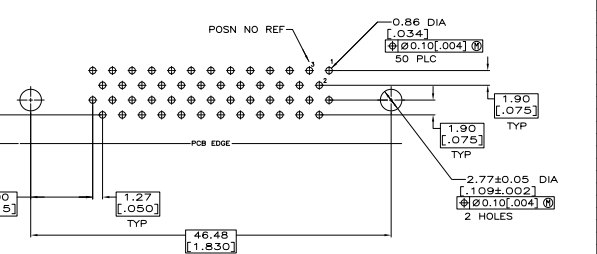
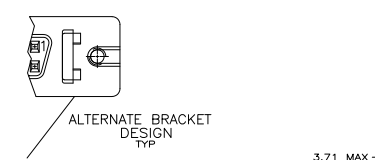
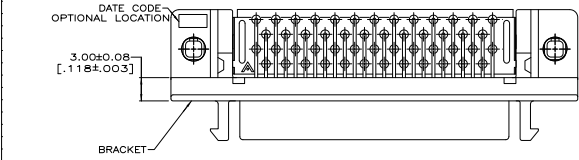
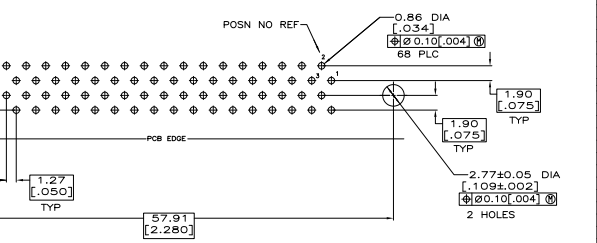


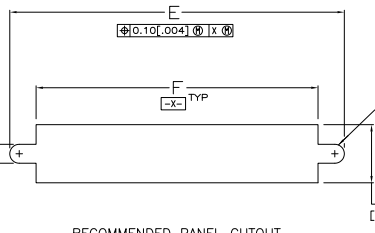
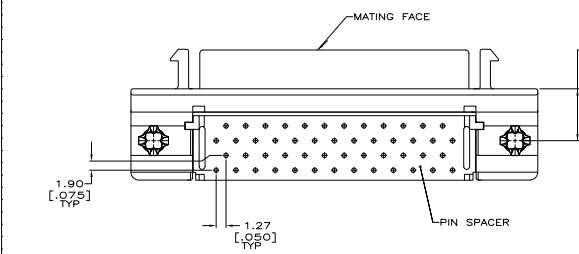
REV	DATE	DESCRIPTION	BY	CHK	APP
00					
01		REVISED PER ECO-08-010444			



P.C. BOARD MOUNTING DIMENSIONS
 CONNCTOR SIDE
 P.C. BOARD THICKNESS 2.36±0.20 [0.93±0.08]
 PC BOARD PATTERN S



P.C. BOARD MOUNTING DIMENSIONS
 CONNECTOR SIDE
 P.C. BOARD THICKNESS 2.36±0.20 [0.93±0.08]
 PC BOARD PATTERN T



- CONTACTS: PHOSPHOR BRONZE.
- HOUSING & PIN SPACER: POLYESTER, UL 94V-0 RATED, THERMOPLASTIC, BLACK
- BRACKET: ZINC.
- SHELL: CARBON STEEL
- BOARDLOCKS: COPPER ALLOY.
- CONTACTS: EITHER 0.76µm [0.00030] MIN GOLD PLATE FOR A LENGTH OF 0.64 [0.25] MAX, 0.13 [0.005] MIN FROM MATING END OR GOLD FLASH OVER PALLADIUM NICKEL PLATE, 0.76µm [0.00030] MIN TOTAL FOR A LENGTH OF 0.64 [0.25] MAX, 0.13 [0.005] MIN FROM MATING END, 3.81µm [0.00150] MIN TIN ON OPPOSITE END FOR A LENGTH OF 3.23 [1.27] MIN, ALL OVER 1.27µm [0.00050] MIN NICKEL UNDERPLATE.
- SHELL: 5.08µm [0.000200] MIN NICKEL OVER 1.27µm [0.00050] MIN COPPER.
- BRACKET: 2.54µm [0.00100] MIN NICKEL OVER 5.08µm [0.000200] MIN COPPER.
- BOARDLOCKS: 5.08µm [0.000200] MIN TIN OVER 1.27µm [0.00050] MIN NICKEL.

RECOMMENDED PANEL CUTOUT

T	0.64	54.23	60.35	63.88	46.13	57.91	68	5787083-7
S	1.27	42.80	48.92	52.45	34.70	46.48	50	5787083-5

PC BOARD PATTERN	L	F	E	D	B	A	NO OF POSN	PART NUMBER
S	1.27	42.80	48.92	52.45	34.70	46.48	50	5787083-5
T	0.64	54.23	60.35	63.88	46.13	57.91	68	5787083-7

COPYRIGHT 2005
TYCO ELECTRONICS CORP
ALL RIGHTS RESERVED

THIS DRAWING IS A CONTROLLED DOCUMENT.

DATE: 11-14-00228
 DRAWN BY: M. WILMSELEY
 CHECKED BY: J. BOLASH
 APPROVED BY: J. BOLASH

TYCO ELECTRONICS CORPORATION
 HARRISBURG, PA 17105-3608

RECEPTACLE ASSEMBLY, SHIELDED, RIGHT ANGLE.

CUSTOMER DRAWING: A1007791G=5787083