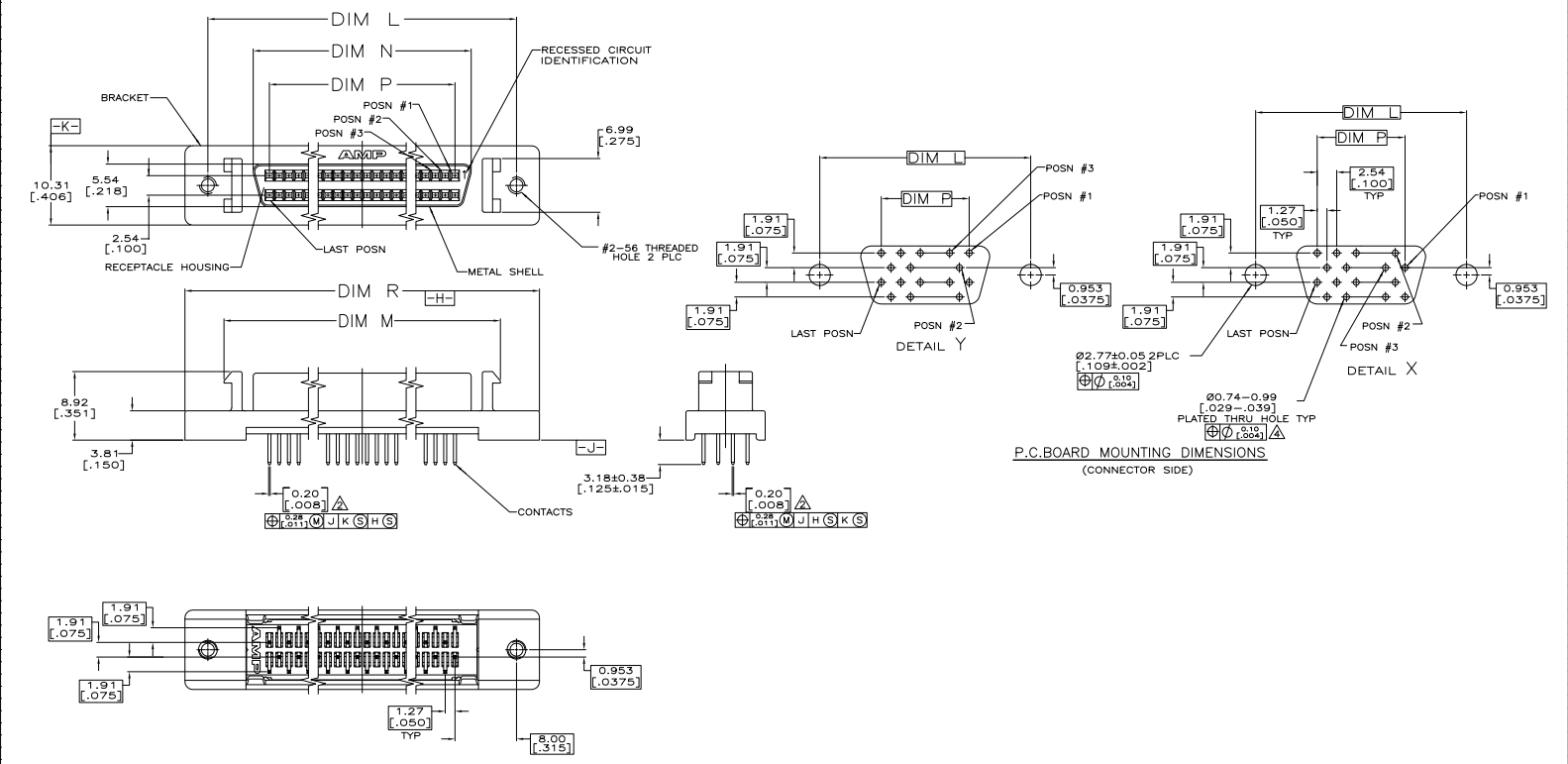


THIS DRAWING IS UNPUBLISHED
 ALL RIGHTS RESERVED

REV	DATE	DESCRIPTION	BY	CHK	APP
GP 00		REVISED PER EDD-11-004835	11MMR11	RK	HMR



- △ FINISH
 CONTACTS: EITHER 0.76µm [.000030] MIN GOLD PLATE FOR A LENGTH OF 0.64 [.025] MIN, 0.13 [.005] MAX FROM MATING END, OR GOLD FLASH PLATED OVER PALLADIUM NICKEL PLATE, 0.76µm [.000030] MIN TOTAL FOR A LENGTH OF 0.64 [.025] MIN, 0.13 [.005] MAX FROM MATING END. 3.81µm [.000150] MIN TIN ON SOLDER POST, BOTH OVER 1.27µm [.000050] MIN NICKEL.
 SHELL: 5.08µm [.000200] MIN NICKEL OVER 1.27µm [.000050] MIN COPPER.
 BRACKET: NICKEL.
- △ POSITION TOLERANCE APPLIES AT TIP ONLY.
- △ MATERIAL
 CONTACTS: PHOSPHOR BRONZE
 HOUSING: UL V-0 RATED THERMOPLASTIC, COLOR, BLACK
 BRACKET: ZINC
 SHELL: CARBON STEEL.
- △ ACTUAL HOLE SIZE USED WILL DEPEND ON TRACE ROUTING REQUIREMENTS BETWEEN HOLES AND CONNECTOR PLACEMENT TECHNIQUE.

X	63.88	41.91	46.13	53.72	57.91	68	5749721-7
	[2.515]	[1.650]	[1.816]	[2.115]	[2.280]		
Y	52.45	30.48	34.70	42.29	46.45	50	5749721-5
	[2.065]	[1.200]	[1.366]	[1.665]	[1.830]		
X	38.48	16.51	20.73	28.32	32.51	28	5749721-3
	[1.515]	[.650]	[.816]	[1.115]	[1.280]		
OBSOLETE X	33.40	11.43	15.65	23.24	27.43	20	5749721-1
	[1.315]	[.450]	[.616]	[.915]	[1.080]		

**COPYRIGHT 2005
 TE CONNECTIVITY CORP
 ALL RIGHTS RESERVED**

THIS DRAWING IS A CONTROLLED DOCUMENT.

DESIGNED BY	J. FERNANDEZ	DATE	01-28-03
DESIGNED BY	M. SHILEY	DATE	01-28-03
DESIGNED BY	M. WILMSLEY	DATE	01-28-03
DESIGNED BY	M. WILMSLEY	DATE	01-28-03

RECEPTACLE ASSEMBLY, SHIELDED, VERTICAL, AMPHIMATE, 0500 Series

DATE: 01-28-03
 DRAWING NO: A100779
 CUSTOMER DRAWING