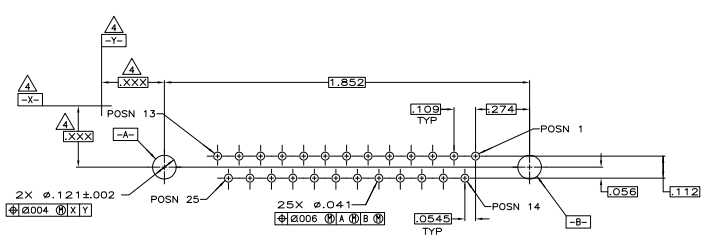
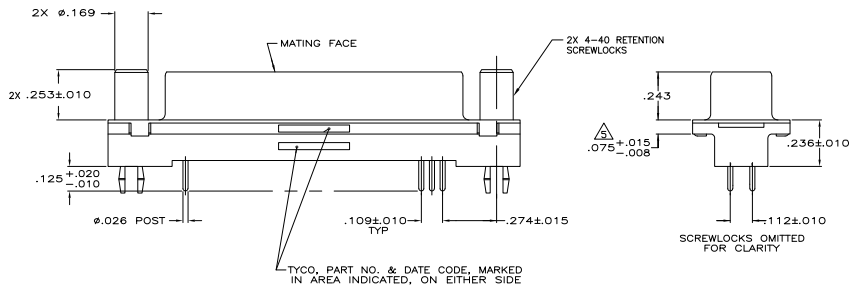
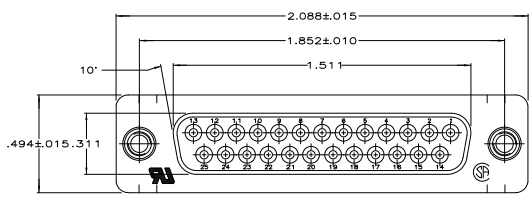


REV	DATE	DESCRIPTION	BY	APP
GP 00				
A		REL. PER EC 0513-043-05	3055PT05	BL JG

- △ HOUSING: POLYESTER, UL 94V-0 RATED, COLOR BLACK.
SHELL: CARBON STEEL.
CONTACTS: PHOS BRONZE.
RETENTION SCREWLOCKS: BRASS.
- △ SHELL: .000200 MIN TIN OVER .000100 MIN COPPER.
RETENTION SCREWLOCKS: .000100 MIN TIN OVER .000050 MIN NICKEL OVER COPPER FLASH.
CONTACTS: .000050 MIN GOLD FOR LENGTH OF .100 MIN FROM MATING END.
.000100 MIN TIN ON SOLDER END, ALL OVER .000050 MIN NICKEL ON ENTIRE CONTACT.
- 3. CONNECTORS PACKAGED IN TUBES IN QUANTITIES OF 10 PER TUBE.
- △ DATUMS AND BASIC DIMENSIONS ESTABLISHED BY CUSTOMER.
- △ .110 MAX IN SHELL TAB CLINCH AREAS.



PC BOARD MOUNTING DIMENSIONS
 CONNECTOR SIDE OF BOARD
 .062 PC BOARD THICKNESS

THIS DRAWING IS A CONTROLLED DOCUMENT.		REV	DATE	DESCRIPTION	BY	APP
REV	DATE	DESCRIPTION	BY	APP		
108-40023	114-40023					
CUSTOMER DRAWING		A1	00779	G=5748612	SIZE	4-1

5748612-1
 PART NUMBER

THIS DRAWING IS A CONTROLLED DOCUMENT.
 TYS ELECTRONICS CORPORATION
 HARRISBURG, PA 17105-3608
 RECEIPT ASSY, SIZE 3, 25 POSN, VERT.
 FRT METAL SHELL, RETENTION SCREWLOCKS.
 AMPLIFITE HS-20