

4

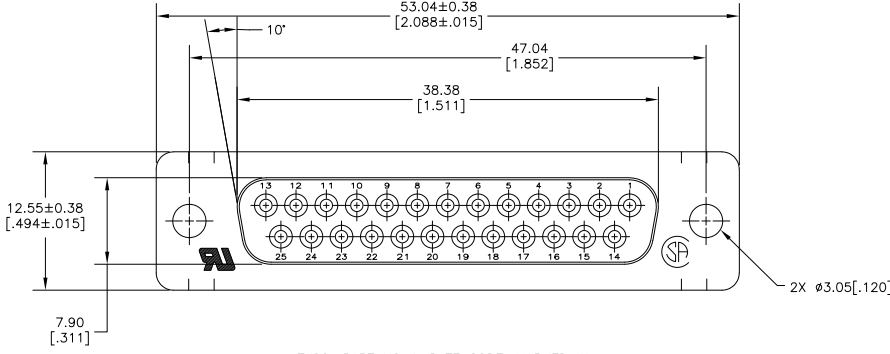
3

2

1

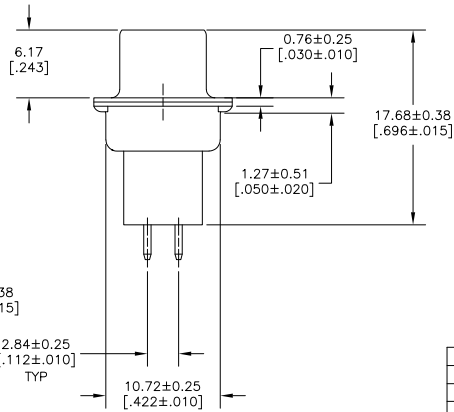
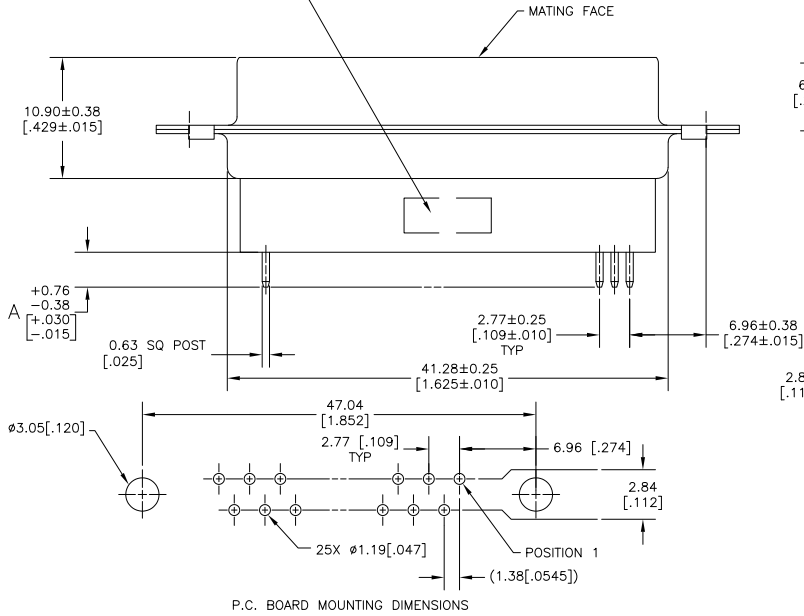
THIS DRAWING IS UNPUBLISHED. RELEASED FOR PUBLICATION
 © COPYRIGHT 2005 BY TYCO ELECTRONICS CORPORATION. ALL RIGHTS RESERVED.

LOC	DIST	REVISIONS					
GP	00	P	LTR	DESCRIPTION	DATE	MIN	APP
		C		REVISED PER ECO-10-000073	2FEB2010	CJV	SB



- 1 MOLDED PARTS: GLASS-FILLED NYLON, UL 94V-0 RATED, COLOR BLACK.
SHELLS: CARBON STEEL.
CONTACTS: PHOS BRONZE.
- 2 SHELLS: 5.08µm [0.000200] MIN TIN OVER 2.54µm [0.000100] MIN COPPER.
CONTACTS: SEE TABLE
- 3 GOLD FLASH ON MATING END, 2.54µm [0.000100] MIN TIN ON SOLDER END, BOTH OVER 1.27µm [0.000050] MIN NICKEL.
- 4 0.76µm [0.000030] MIN GOLD ON MATING END, 2.54µm [0.000100] MIN TIN ON SOLDER END, BOTH OVER 1.27µm [0.000050] MIN NICKEL.
-OR-
GOLD FLASH OVER PALLADIUM-NICKEL 0.76µm [0.000030] MIN TOTAL ON MATING END, 2.54µm [0.000100] MIN TIN ON SOLDER END, BOTH OVER 1.27µm [0.000050] MIN NICKEL.

TYCO, PART NO & DATE CODE, MARKED IN AREA INDICATED, ON FAR SIDE



1	4.77 [0.188]	5745187-8
2	4.77 [0.188]	5745187-7
3	10.84 [0.427]	5745187-3
4	3.17 [0.125]	5745187-1
CONTACT FINISH	DIMENSION A	PART NO

THIS DRAWING IS A CONTROLLED DOCUMENT.

DIMENSIONS: mm (INCHES)	UNLESS OTHERWISE SPECIFIED	DR: LATTUCA 14SEP05	OK: BOLASH 14SEP05	APP: M. WALMSLEY 14SEP05	NAME: M. WALMSLEY	TYCO ELECTRONICS Corporation Harrisburg, Pa 17105-3608
0 PLG ± -	1 PLG ± -	2 PLG ± -	3 PLG ± 0.13 (0.005)	4 PLG ± ±	ANGLES ± ±	RECEPTACLE ASSEMBLY, SIZE 3, 25 POSITION, VERTICAL, AMPLIMITE HDP
MATERIAL: 1	FINISH: 2	PRODUCT SPEC: 108-40025	APPLICATION SPEC: 114-40013	WEIGHT: -	SIZE: A2	SIZE: A2
CUSTOMER DRAWING			00779	C=5745187	RESTRICTED TO: -	SCALE: NTS
			SHEET: 1	REV: 1	REV: C	

AMP 1471-9 REV 31MM2000

5745187

B

A