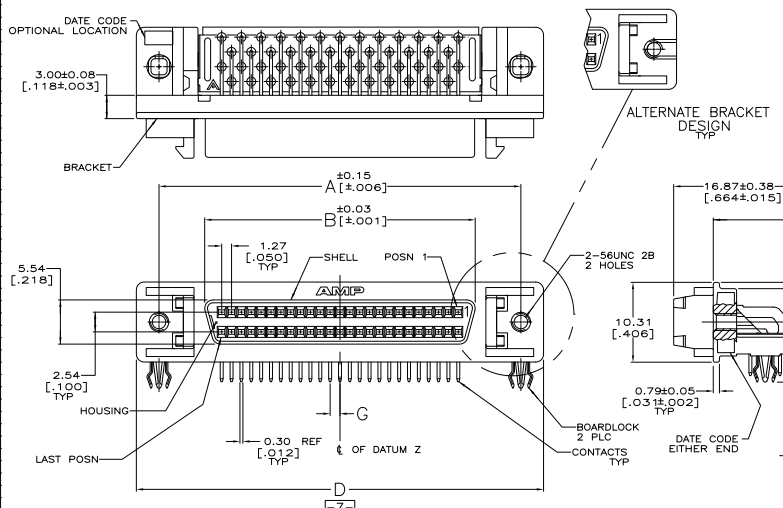


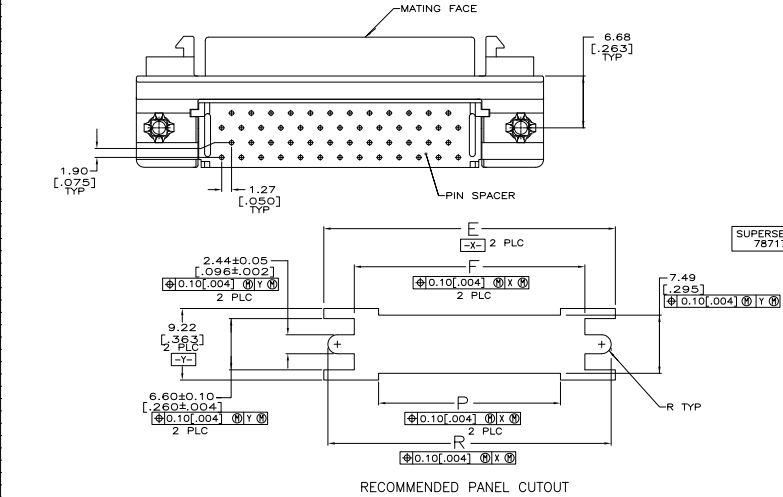
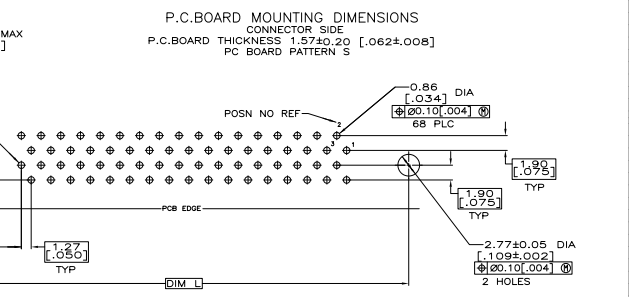
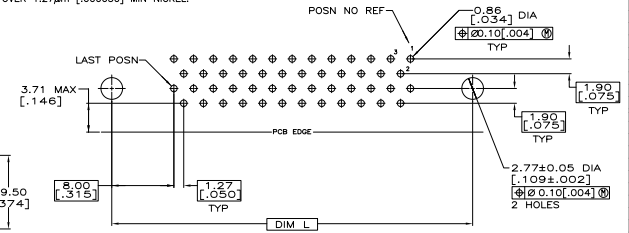
REV	DATE	DESCRIPTION	BY	CHK	APP
00					
01		REVISED PER EDD-11-004835			



MATERIAL
CONTACTS: PHOSPHOR BRONZE
HOUSING & PIN SPACER: UL 94V-0 RATED, THERMOPLASTIC, BLACK
BRACKET: ZINC
SHELL: CARBON STEEL
BOARDLOCKS: COPPER ALLOY.

FINISH
CONTACTS: EITHER 0.76µm [0.00030] MIN GOLD PLATE FOR A LENGTH OF 0.64 [0.25] MAX, 0.13 [0.05] MIN FROM MATING END OR GOLD FLASH OVER PALLADIUM NICKEL PLATE, 0.76µm [0.00030] MIN TOTAL FOR A LENGTH OF 0.64 [0.25] MAX, 0.13 [0.05] MIN FROM MATING END. 3.81µm [0.00150] MIN TIN-LEAD ON OPPOSITE END FOR A LENGTH OF 2.72 [1.07] MIN, BOTH OVER 1.27µm [0.00050] MIN NICKEL.
SHELL: 5.08µm [0.000200] MIN NICKEL OVER 1.27µm [0.00050] MIN COPPER.
BRACKET: 2.54µm [0.00100] MIN NICKEL OVER 5.08µm [0.000200] COPPER.

5.08µm [0.000200] MIN TIN-LEAD OVER 1.27µm [0.00050] MIN NICKEL.
3.00µm [0.00118] MIN TIN OVER 1.27µm [0.00050] MIN NICKEL.



SUPERSEDED BY 787171-5

TUBE	TRAY	TUBE	TUBE	TUBE	TUBE	TUBE	TUBE	TUBE	TUBE	TUBE	PACKAGING	BOARDLOCK FINISH	PC BOARD PATTERN	R	P	L	G	F	E	D	B	A	NO OF POS	PART NUMBER
60.35	47.85	57.91	0.64	54.23	61.98	63.88	46.13	57.91	68	1-787171-6														
2.376	1.884	2.280	[.025]	2.135	2.440	2.515	1.816	2.280																
48.92	36.42	46.48	1.27	42.80	50.55	52.45	34.70	46.48	50	1-787171-5														
1.926	1.434	1.834	[.050]	1.685	1.990	2.065	1.366	1.830																
80.67	68.17	78.23	0.64	74.55	82.30	84.20	66.45	78.23	100	787171-9														
3.176	2.684	3.080	[.025]	2.935	3.240	3.315	2.616	3.080																
60.35	47.85	57.91	0.64	54.23	61.98	63.88	46.13	57.91	68	787171-7														
2.376	1.884	2.280	[.025]	2.135	2.440	2.515	1.816	2.280																
48.92	36.42	46.48	1.27	42.80	50.55	52.45	34.70	46.48	50	787171-5														
1.926	1.434	1.834	[.050]	1.685	1.990	2.065	1.366	1.830																
42.57	30.07	40.13	0.64	36.45	44.20	46.10	28.35	40.13	40	787171-4														
1.676	1.184	1.580	[.025]	1.435	1.740	1.815	1.116	1.580																
33.68	21.18	31.24	1.27	27.56	35.31	37.21	19.46	31.24	26	787171-2														
1.326	.834	1.230	[.050]	1.085	1.390	1.465	.766	1.230																

THIS DRAWING IS A CONTROLLED DOCUMENT. SEE INSTRUCTIONS FOR STORAGE AND CONTROL.

TE Connectivity
RECEPTACLE ASSEMBLY, SHIELDED, RIGHT ANGLE, RAILED, TH

114-40028
A100779 (G)=787171

CUSTOMER DRAWING