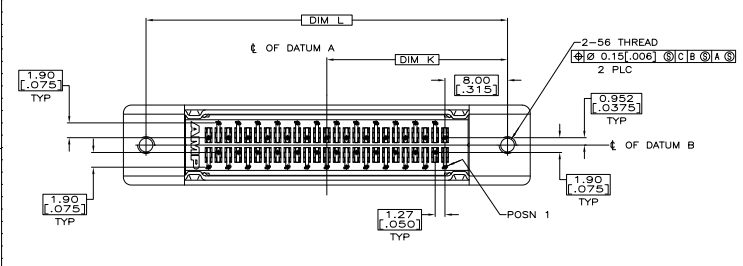
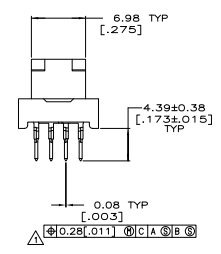
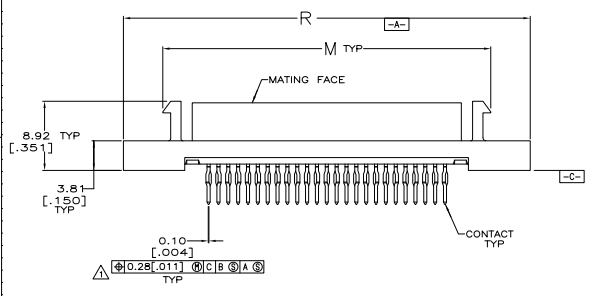
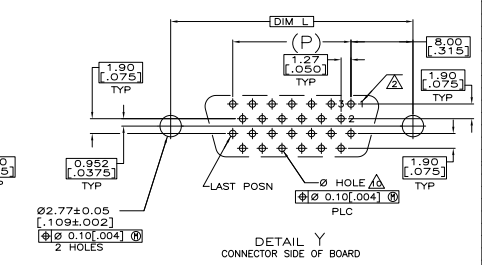
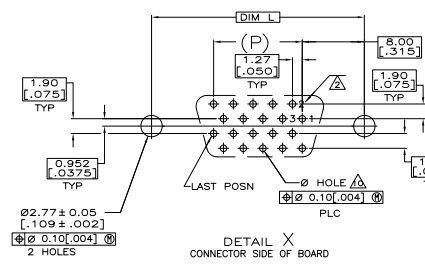
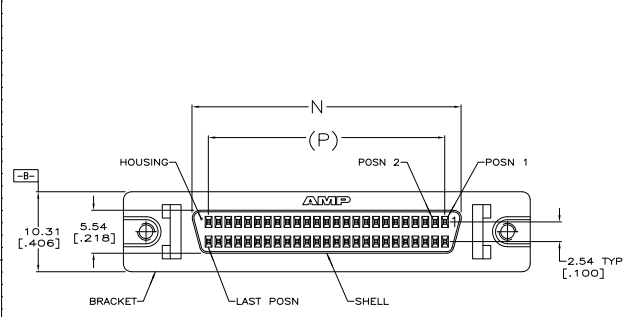


REV	DATE	DESCRIPTION	BY	CHK	APP
GP 00					
A		REVISED PER ECO-08-018735			



- △ POSITION TOLERANCE APPLIES AT CONTACT TIP.
- △ POSITION NUMBERS SHOWN FOR REFERENCE ONLY.
- △ HOUSING: POLYPHTHALAMIDE, BLACK, UL 94-V0 RATED.
- △ SHELL: CARBON STEEL PER ASTM A109.
- △ CONTACT: PHOSPHOR BRONZE PER QQ-B-750.
- △ BRACKET: ZINC
- △ SHELL: 5.08µm [.000200] MIN NICKEL OVER 1.27µm [.000050] MIN COPPER.
- △ BRACKET: 3.81µm [.000150] MIN NICKEL OVER 5.08µm [.000200] MIN COPPER.
- △ CONTACT: EITHER 0.76µm [.000030] MIN GOLD PLATE OR GOLD FLASH OVER PALLADIUM NICKEL PLATE, 0.76µm [.000030] MIN TOTAL, FOR A LENGTH OF 0.64 [.025] MIN, 0.13 [.005] MAX FROM MATING END, 1.27µm [.000050] MIN TIN PLATED ON OPPOSITE END FOR A LENGTH OF 4.78 [.188] MIN, ALL OVER 1.27µm [.000050] MIN NICKEL UNDERPLATE.
- △ PC BOARD HOLE RECOMMENDATIONS:  
 A. HOLES SHOULD BE DRILLED WITH A 0.701 [.0276] DRILL.  
 B. PC BOARD PLATING TO BE 7.62µm [.000300] MIN TIN OVER 0.025-0.038 [.0010-.0015] COPPER.  
 C. RECOMMENDED HOLE SIZE AFTER TIN PLATING IS 0.56-0.66 [.022-.026].

OBSOLETE	PER DETAIL X	84.20	62.23	66.45	74.04	78.23	39.12	100	5786155-9
		[3.315]	[2.450]	[2.616]	[2.915]	[3.080]	[1.540]		
	PER DETAIL X	63.88	41.91	46.13	53.72	57.91	28.96	68	5786155-7
	PER DETAIL Y	52.45	30.48	34.70	42.29	46.48	23.24	50	5786155-5
	RECOMMENDED PCB MFG DIMENSIONS	[2.065]	[1.200]	[1.366]	[1.665]	[1.830]	[.915]	NO OF POSN	PART NO.

**COPYRIGHT 2005  
 TYCO ELECTRONICS CORP  
 ALL RIGHTS RESERVED**

THIS DRAWING IS A CONTROLLED DOCUMENT. IT IS THE PROPERTY OF TYCO ELECTRONICS CORPORATION. IT IS TO BE KEPT IN CONFIDENCE AND NOT TO BE REPRODUCED OR TRANSMITTED IN ANY FORM OR BY ANY MEANS, ELECTRONIC OR MECHANICAL, INCLUDING PHOTOCOPYING, RECORDING, OR BY ANY INFORMATION STORAGE AND RETRIEVAL SYSTEM, WITHOUT THE WRITTEN PERMISSION OF TYCO ELECTRONICS CORPORATION.

RECEPACLE ASSEMBLY, SHELDED, VERTICAL, .062 TO .093 THK. BR. ACTION PIV. .050 SERIES AMP/LITE

114-40029  
 108-1228  
 1007791C=5786155

CUSTOMER DRAWING