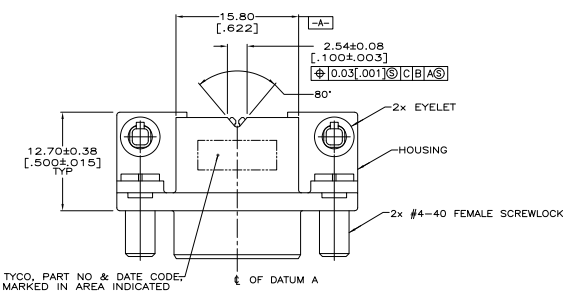
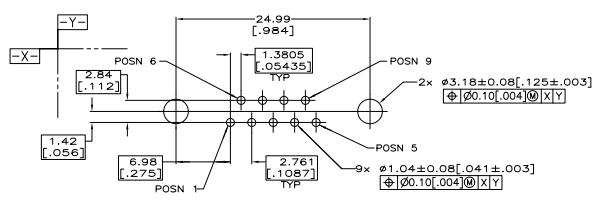
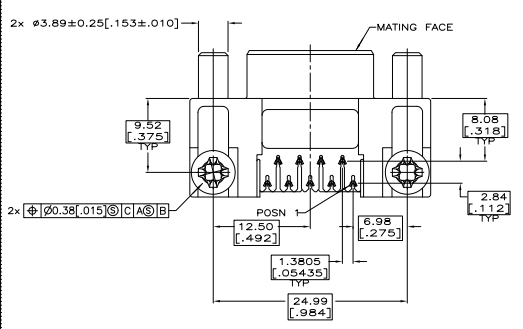
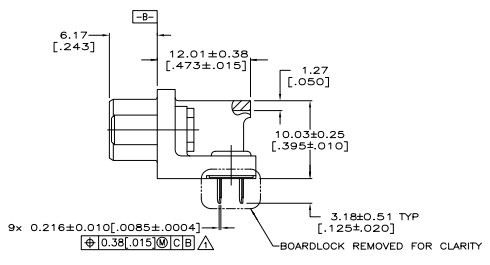
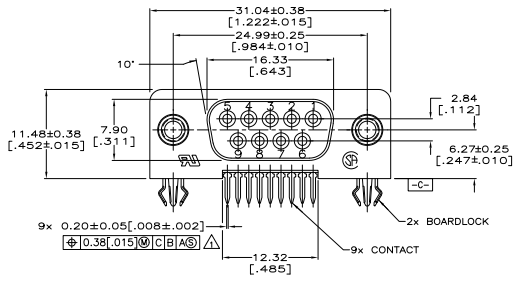


REV. NO.		REVISIONS		DATE	BY	APP'D.
GP	00					
A		REVISED FOR ECO-07-019435		21MAY07	BM	BS



- $\triangle$  POSITION TOLERANCE APPLIES AT TIP ONLY.
- $\triangle$  HOUSING: FLAME RETARDANT, UL94V-0 RATED, GLASS FILLED NYLON OR POLYESTER, COLOR BLACK.
- CONTACTS: PHOSPHOR BRONZE.
- EYELETS: BRASS.
- SCREWLOCKS: ZINC.
- BOARDLOCKS: COPPER ALLOY.
- $\triangle$  EYELETS: 2.54  $\mu$ m [.000100] MIN TIN OVER COPPER FLASH.
- BOARDLOCKS: 3.81  $\mu$ m [.00015] MIN TIN OVER 1.27  $\mu$ m [.000050] MIN NICKEL.
- CONTACTS: 0.76  $\mu$ m [.00030] MIN GOLD FOR A LENGTH OF 1.52 [.060] MIN FROM MATING END, 2.54  $\mu$ m [.0001] MIN TIN FOR A LENGTH OF 3.68 [.145] FROM OPPOSITE END, BOTH OVER 1.27  $\mu$ m [.000050] MIN NICKEL.
- SCREWLOCKS: CLEAR CHROMATE COATING.
- $\triangle$  NO SCREWLOCKS. .126 MOUNTING HOLE.



PC BOARD MOUNTING DIMENSIONS  
 (.062 PC BOARD THICKNESS)

$\triangle$	5748979-2
$\triangle$	5748979-1
$\triangle$	PART NUMBER

THIS DRAWING IS A CONTROLLED DOCUMENT.		IN METERS		IN INCHES		Tyco Electronics Corporation	
DATE	11-4-0027	REVISED	108-1226	REVISED	108-1226	RECEPTACLE ASSEMBLY, SIZE 1, 9 POSN, ALL PLASTIC, RIGHT ANGLE, 318 SERIES, AMP, MATE B	
SIZE	A1	DATE SIZE	114-40027	DATE SIZE	114-40027	REWORKED TO	---
CUSTOMER DRAWING		SIZE	4:1	SHEET	1 of 1	REV	A