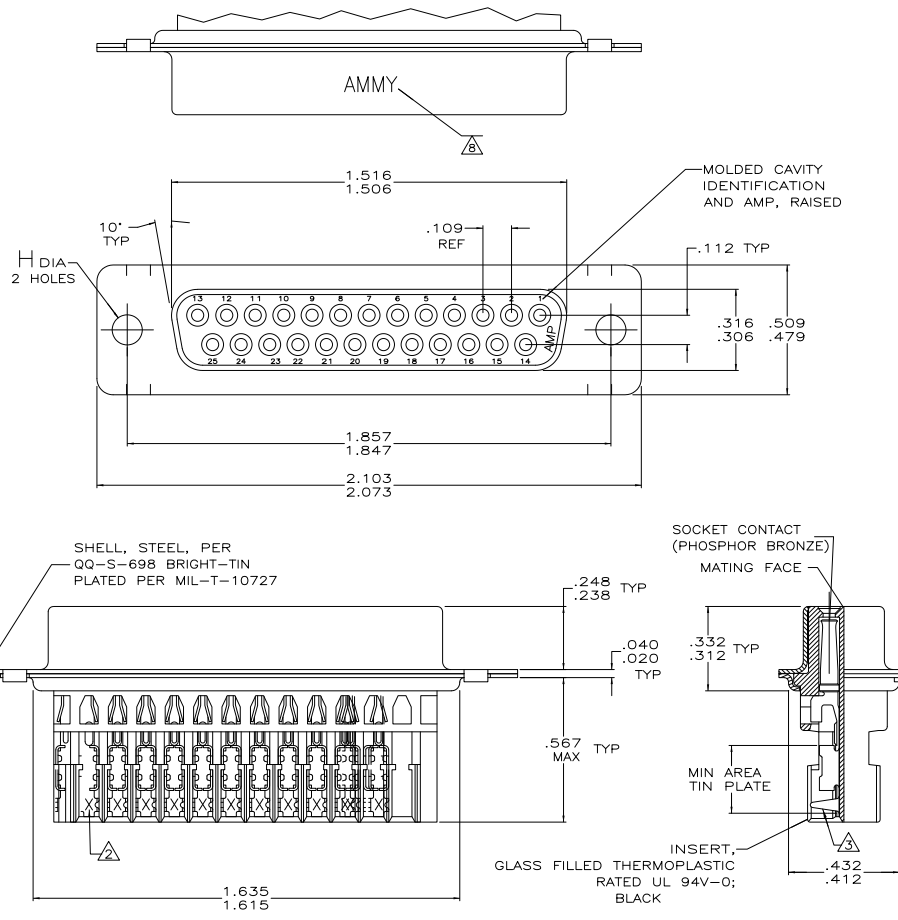


THIS DRAWING IS UNPUBLISHED
 ALL RIGHTS RESERVED

REV	DATE	DESCRIPTION	BY	CHK	APP
00					
01		REVISED PER EDD-11-004835			



- △ HOUSING FULLY LOADED WITH CONTACTS.
- △ NUMBER ON CONTACT INDICATES WIRE RANGE.
- △ CONTACT INSULATION RANGE: .060 MAXIMUM O.D.
- △ .000030 GOLD ON MATING END FOR .100 MIN LENGTH. .000100-.000200 BRIGHT TIN OR BRIGHT TIN-LEAD IN AREA SHOWN. .000050 NICKEL UNDERPLATE ON ENTIRE CONTACT.
- △ .000001 MIN GOLD ON MATING END FOR .100 MIN LENGTH. .000100-.000200 BRIGHT TIN OR BRIGHT TIN-LEAD IN AREA SHOWN. .000030 NICKEL UNDERPLATE ON ENTIRE CONTACT.
- △ .000020 GOLD ON MATING END FOR .100 MIN LENGTH. .000100-.000200 BRIGHT TIN OR BRIGHT TIN-LEAD IN AREA SHOWN. .000050 NICKEL UNDERPLATE ON ENTIRE CONTACT.
- △ .000050 MIN GOLD ON MATING END FOR .100 MIN LENGTH. .000100-.000200 BRIGHT TIN OR BRIGHT TIN-LEAD IN AREA SHOWN. .000050 MIN NICKEL UNDERPLATE ON ENTIRE CONTACT.
- △ SPECIAL DATE CODE IN THIS APPROXIMATE AREA. A; MM = MONTH; Y = LAST DIGIT OF YEAR.
- △ .000030 GOLD ON MATING END FOR .100 MIN LENGTH. .000100-.000200 MATTE TIN IN AREA SHOWN. .000050 NICKEL UNDERPLATE ON ENTIRE CONTACT.
- △ .000001 MIN GOLD ON MATING END FOR .100 MIN LENGTH. .000100-.000200 MATTE TIN IN AREA SHOWN. .000030 NICKEL UNDERPLATE ON ENTIRE CONTACT.
- △ OBSOLETE

STANDARD	.125 .115	△10	2	#22-26	2-745495-0
STANDARD	.125 .115	△9	3	#20-22	1-745495-9
STANDARD	.125 .115	△9	2	#22-26	1-745495-8
STANDARD	.125 .115	△9	1	#26-30	1-745495-7
SMALL PACK	.125 .115	△5	2	#22-26	1-745495-6
STANDARD	.125 .115	△	2	#22-26	1-745495-4
STANDARD	.125 .115	△6	2	#22-26	1-745495-3
STANDARD	.156 .146	△5	3	#20-22	1-745495-2
STANDARD	.156 .146	△	2	#22-26	1-745495-1
STANDARD	.156 .146	△	1	#26-30	1-745495-0
STANDARD	.156 .146	△	3	#20-22	745495-9
STANDARD	.156 .146	△	2	#22-26	745495-8
STANDARD	.156 .146	△	1	#26-30	745495-7
STANDARD	.125 .115	△5	3	#20-22	745495-6
STANDARD	.125 .115	△	2	#22-26	745495-5
STANDARD	.125 .115	△	1	#26-30	745495-4
STANDARD	.125 .115	△5	3	#20-22	745495-3
STANDARD	.125 .115	△	2	#22-26	745495-2
STANDARD	.125 .115	△	1	#26-30	745495-1
PACKAGING	H	CONTACT FINISH	△	AWG RANGE	PART NUMBER

THIS DRAWING IS A CONTROLLED DOCUMENT. CHALLENGE BY: 11-19-93

DATE: 11-19-93

BY: MOLL

DATE: 11-19-93

REVISIONS:

REVISION NO. 1

DATE 11/19/93

DESCRIPTION: RECEPTACLE ASSEMBLY, METAL SHELL, SIZE 3, 25 POSITION.

SIZE: A1

DATE: 11/19/93

DRAWING NO: 00779

REV: 0

REVISED BY: [Signature]

DATE: 11/19/93

DESCRIPTION: CUSTOMER DRAWING

DATE: 11/19/93

BY: [Signature]

DATE: 11/19/93