

4

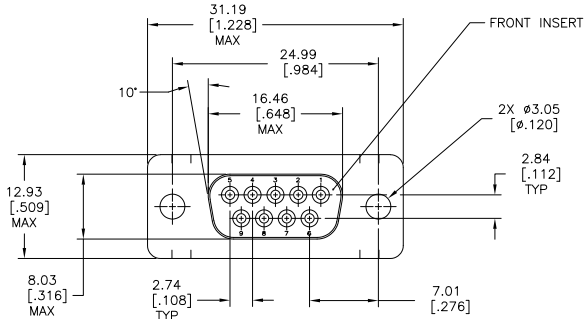
3

2

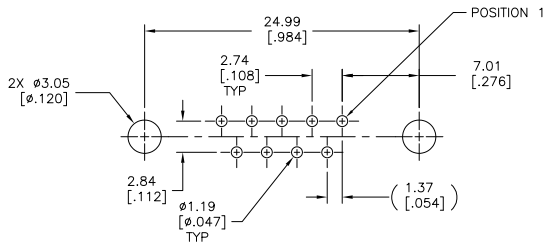
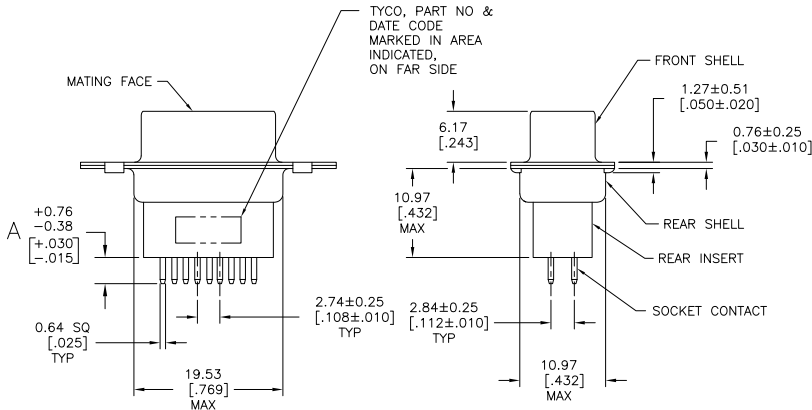
1

THIS DRAWING IS UNPUBLISHED. RELEASED FOR PUBLICATION.
 © COPYRIGHT 2005 BY TYCO ELECTRONICS CORPORATION. ALL INTERNATIONAL RIGHTS RESERVED.

LOC	DIST	REVISIONS		
F	LN	DESCRIPTION	DATE	BY
C		REVISED PER ECO-10-000073	27JAN2010	CJV SB



- 1 MOLDDED PARTS: GLASS-FILLED NYLON, BLACK, UL 94V-0 RATED
SHELLS: CARBON STEEL.
CONTACTS: PHOS BRONZE.
- 2 SHELLS: 5.08µm [.000200] MIN ZINC WITH YELLOW CHROMATE COATING.
CONTACTS: GOLD FLASH PLATED FOR LENGTH OF 3.81[.150] MIN FROM MATING END,
2.54µm [.000100] MIN TIN ON SOLDER END, BOTH OVER
1.27µm [.000050] MIN NICKEL.
- 3 SHELLS: 5.08µm [.000200] MIN ZINC WITH YELLOW CHROMATE COATING.
CONTACTS: GOLD FLASH PLATED FOR LENGTH OF 3.81[.150] MIN FROM MATING END,
0.76µm [.000030] MIN GOLD IN MATED AREA,
2.54µm [.000100] MIN TIN ON SOLDER END, BOTH OVER
1.27µm [.000050] MIN NICKEL.
OR
GOLD FLASH OVER PALLADIUM-NICKEL PLATED FOR LENGTH OF
3.81 [.150] MIN FROM MATING END,
0.76µm [.000030] MIN TOTAL IN MATED AREA,
2.54µm [.000100] MIN TIN ON SOLDER END, BOTH OVER
1.27µm [.000050] MIN NICKEL.



P.C. BOARD MOUNTING DIMENSIONS

3	4.78 [.188]	5205734-7
3	16.54 [.651]	5205734-5
2	10.85 [.427]	5205734-4
3	3.18 [.125]	5205734-1

GOLD FINISH A PART NO

THIS DRAWING IS A CONTROLLED DOCUMENT.		DR B. LATTUCA 02SEP105	Tyco Electronics Corporation Harrisburg, PA 17105-3608	
DIMENSIONS: mm [INCHES]		CHK S. BOLASH 02SEP105	NAME M. WALMSLEY	
TOLERANCES UNLESS OTHERWISE SPECIFIED:		APPD M. WALMSLEY 02SEP105	PRODUCT SPEC 108-40025	
Ø	PLC ± .005	APPLICATION SPEC 114-40013	SIZE CASE CODE DRAWING NO	
1	PLC ± .005	WEIGHT	A2 00779 C=5205734	
2	PLC ± .005	FINISH	RESTRICTED TO	
3	PLC ± .005		CUSTOMER DRAWING	
4	PLC ± .005		SCALE NTS SHEET 1 of 1 REV C	