

4

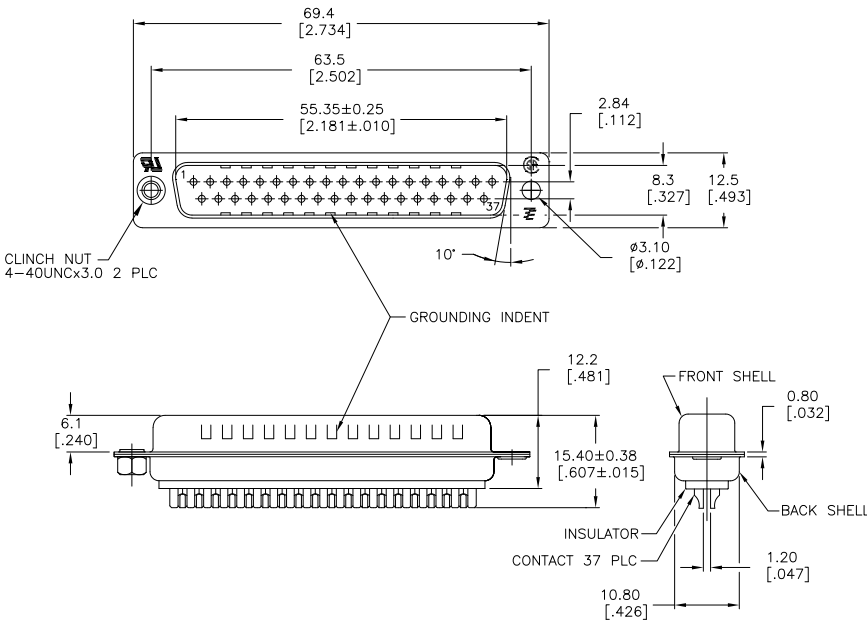
3

2

1

THIS DRAWING IS UNPUBLISHED. RELEASED FOR PUBLICATION. ALL RIGHTS RESERVED.

LOC	DIST	REVISIONS		
F	LNK	DESCRIPTION	DATE	BY
AD	0			
	S3	REVISED PER ECO-11-004587	11MAR11	RK HMR



- 1 MATERIAL:  
FRONT INSULATOR: PBT, 30 %GF, UL94V-0, BLACK COLOR  
BACK INSULATOR: PBT, 30 %GF, UL94V-0, BLACK COLOR  
CONTACT: BRASS  
FRONT SHELL: STEEL  
BACK SHELL: STEEL  
CLINCH NUTS: BRASS
- 2 FINISH:  
CONTACT: GOLD PLATING 0.0002[.000008] MIN ON CONTACT AREA 0.00229 [.000090] MIN TIN-LEAD PLATING ALL OVER 0.00127[.000050] MIN NICKEL
- 3 CONTACT: GOLD PLATING 0.00076[.000030] MIN ON CONTACT AREA 0.00229 [.000090] MIN TIN-LEAD PLATING ALL OVER 0.00127[.000050] MIN NICKEL
- 4 SHELL: TIN 0.0241[.000095] MIN FULL SHELL
- 5 SHELL: BLUE ZINC: 0.00508[.000200] - 0.00762[.000300] OVER ENTIRE SHELL
- 6 CONTACT: GOLD PLATING 0.0002[.000008] MIN ON CONTACT AREA 0.00229 [.000090] MIN TIN-COPPER PLATING ALL OVER 0.00127[.000050] MIN NICKEL
- 7 CLINCH NUTS: NICKEL PLATING .00305-.00508[.000120-.000200]
- 8 SPECIFICATION  
ELECTRICAL CHARACTERISTICS: CURRENT RATING: 3 AMPERES  
DIELECTRIC WITHSTANDING VOLTAGE: AC 1000V r.m.s  
INSULATION RESISTANCE: 5000 MEGOHMS MINIMUM AT DC 500V  
CONTACT RESISTANCE: 10 MILLIOHMS MAXIMUM.
- 9 ROHS 2002/95/EC COMPLIANT
- 10 PLUG ASSEMBLY MATES WITH ANY 37 POSITION RECEPTACLE IN AMPLIMITE SERIES
- 11 SOLDER CUP WILL ACCOMMODATE 20 MAX AWG WIRE.
- 12 CONTACT: GOLD PLATING 0.00076[.000030] MIN ON CONTACT AREA 0.00229[.000090] MIN TIN-COPPER ALL OVER 0.00127[.000050] MIN NICKEL PLATING
- 13 OBSOLETE PARTS: OBSOLETE CIS STREAMLINING PER D.RENAUD/D.SINISI

STANDARD	NO	NO	NO	NO	NO	NO	NO
OBsolete	STANDARD	YES	YES	YES	YES	YES	5-747916-4
STANDARD	NO	YES	YES	YES	YES	YES	5-747916-6
STANDARD	NO	YES	YES	YES	YES	YES	5-747916-5
STANDARD	NO	YES	YES	YES	YES	YES	5-747916-2
SUPERSEDED TO 5-747916-2	STANDARD	NO	YES	YES	YES	YES	747916-7
SUPERSEDED TO 5-747916-6	STANDARD	YES	YES	YES	YES	YES	747916-6
SUPERSEDED TO 5-747916-5	STANDARD	NO	YES	YES	YES	YES	747916-5
SUPERSEDED TO 5-747916-4	STANDARD	NO	NO	NO	NO	NO	747916-4
SUPERSEDED TO 5-747916-2	STANDARD	NO	YES	YES	YES	YES	747916-2

THIS DRAWING IS A CONTROLLED DOCUMENT.

DIMENSIONS: mm [INCHES]	TOLERANCES UNLESS OTHERWISE SPECIFIED:	0 PLC ± .	1 PLC ± 0.25	2 PLC ± 0.13	3 PLC ± 0.08	4 PLC ± .	ANGLES ± .
MATERIAL	FINISH	SEE TABLE					

APPLICATOR: R. BENDORF	DATE: 04MAY03	NAME: R. BENDORF	DATE: 04MAY03
PRODUCT SPEC: PLUG ASSEMBLY, SOLDER CUP, SIZE 4, 37 POSN, HD-20, AMPLIMITE	APPLICATION SPEC: PLUG ASSEMBLY, SOLDER CUP, SIZE 4, 37 POSN, HD-20, AMPLIMITE	SIZE: A2	ORIG CODE: 00779
WEIGHT: -	DRAWING NO: C=747916	RESTRICTED TO: -	
CUSTOMER DRAWING	SCALE: 2:1	SHEET: 1 of 1	REV: S3