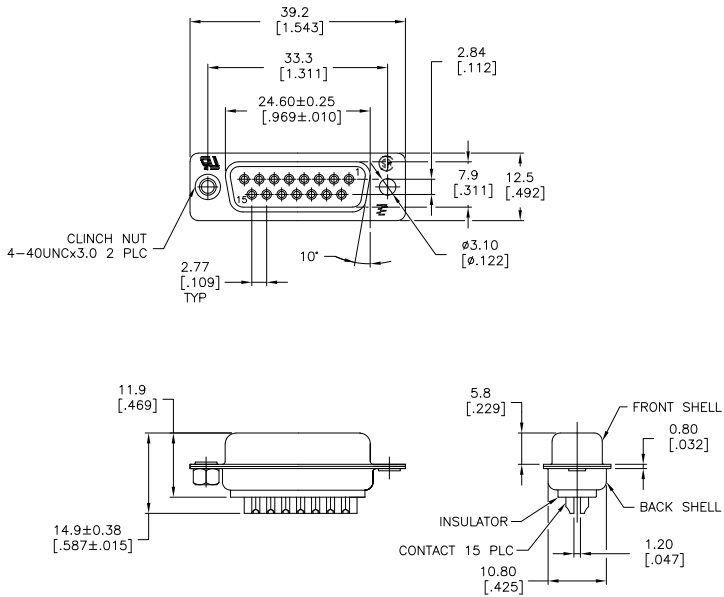


THIS DRAWING IS UNPUBLISHED. RELEASED FOR PUBLICATION. ALL RIGHTS RESERVED.

LOC		DIST		REVISIONS			
F	LNK	DESCRIPTION	DATE	BY	APPD		
BD	00						
	T3	REVISED PER ECO-11-004587	11MAR11	RK	HMR		



- 1 MATERIAL:
 BACK INSULATOR: PBT, 30 %GF, UL94V-0, BLACK COLOR
 FRONT INSULATOR: PBT, 30 %GF, UL94V-0, BLACK COLOR
 CONTACT: BRASS
 BACK SHELL: STEEL
 CLINCH NUTS: BRASS
 FRONT SHELL: STEEL
- 2 FINISH:
 CONTACT: GOLD PLATING 0.00002[.000008] MIN ON CONTACT AREA 0.00229 [.000090] MIN TIN-LEAD PLATING ALL OVER 0.00127[.000050] MIN NICKEL
- 3 CONTACT: GOLD PLATING 0.00076[.000030] MIN ON CONTACT AREA 0.00229 [.000090] MIN TIN-LEAD PLATING ALL OVER 0.00127[.000050] MIN NICKEL
- 4 SHELL: TIN 0.0241[.000095] MIN FULL SHELL
- 5 SHELL: BLUE ZINC: 0.00508[.000200] - 0.00762[.000300] OVER ENTIRE SHELL
- 6 CONTACT: GOLD PLATING 0.00002[.000008] MIN ON CONTACT AREA 0.00229 [.000090] MIN TIN-COPPER PLATING ALL OVER 0.00127[.000050] MIN NICKEL
- 7 CLINCH NUTS: NICKEL PLATING .00305-.00508[.000120-.000200]
- 8 SPECIFICATION
 ELECTRICAL CHARACTERISTICS: CURRENT RATING: 3 AMPERES
 DIELECTRIC WITHSTANDING VOLTAGE: AC 1000V r.m.s
 INSULATION RESISTANCE: 5000 MEGOHMS MINIMUM AT DC 500V
 CONTACT RESISTANCE: 10 MILLIOHMS MAXIMUM.
- 9 ROHS 2002/95/EC COMPLIANT
- 10 RECEPTACLE ASSEMBLY MATES WITH ANY 15 POSITION PLUG IN AMPLIMITE SERIES
- 11 SOLDER CUP WILL ACCOMMODATE 20 MAX AWG WIRE.
- 12 CONTACT: GOLD PLATING 0.00076[.000030] MIN ON CONTACT AREA 0.00229[.000090] MIN TIN-COPPER ALL OVER 0.00127[.000050] MIN NICKEL PLATING

STANDARD	NO	YES	NO	YES	NO	YES
STANDARD	NO	YES	NO	YES	NO	YES
STANDARD	NO	YES	NO	YES	NO	YES
STANDARD	NO	YES	NO	YES	NO	YES
STANDARD	NO	YES	NO	YES	NO	YES
STANDARD	NO	YES	NO	YES	NO	YES
STANDARD	NO	YES	NO	YES	NO	YES
STANDARD	NO	YES	NO	YES	NO	YES
STANDARD	NO	YES	NO	YES	NO	YES
STANDARD	NO	YES	NO	YES	NO	YES
STANDARD	NO	YES	NO	YES	NO	YES
STANDARD	NO	YES	NO	YES	NO	YES
STANDARD	NO	YES	NO	YES	NO	YES
STANDARD	NO	YES	NO	YES	NO	YES
STANDARD	NO	YES	NO	YES	NO	YES

THIS DRAWING IS A CONTROLLED DOCUMENT.		DRW	M. BINNER	03MAR03
		CHK	R. BENDORF	03MAR03
		APPD	R. BENDORF	03MAR03
		NAME	R. BENDORF	
DIMENSIONS		TOLERANCES UNLESS OTHERWISE SPECIFIED		
mm [INCHES]		0 PLC	±	
		1 PLC	± 0.25	
		2 PLC	± 0.13	
		3 PLC	± 0.08	
		4 PLC	± 0.05	
		ANGLES	± 0.5°	
MATERIAL	FINISH	SEE TABLE		
		APPLICATION SPEC	SIZE	CAGE CODE
		WEIGHT	A2	00779
		CUSTOMER DRAWING	C=	747909
		SCALE	2:1	SHEET 1 of 1
		REV	T3	