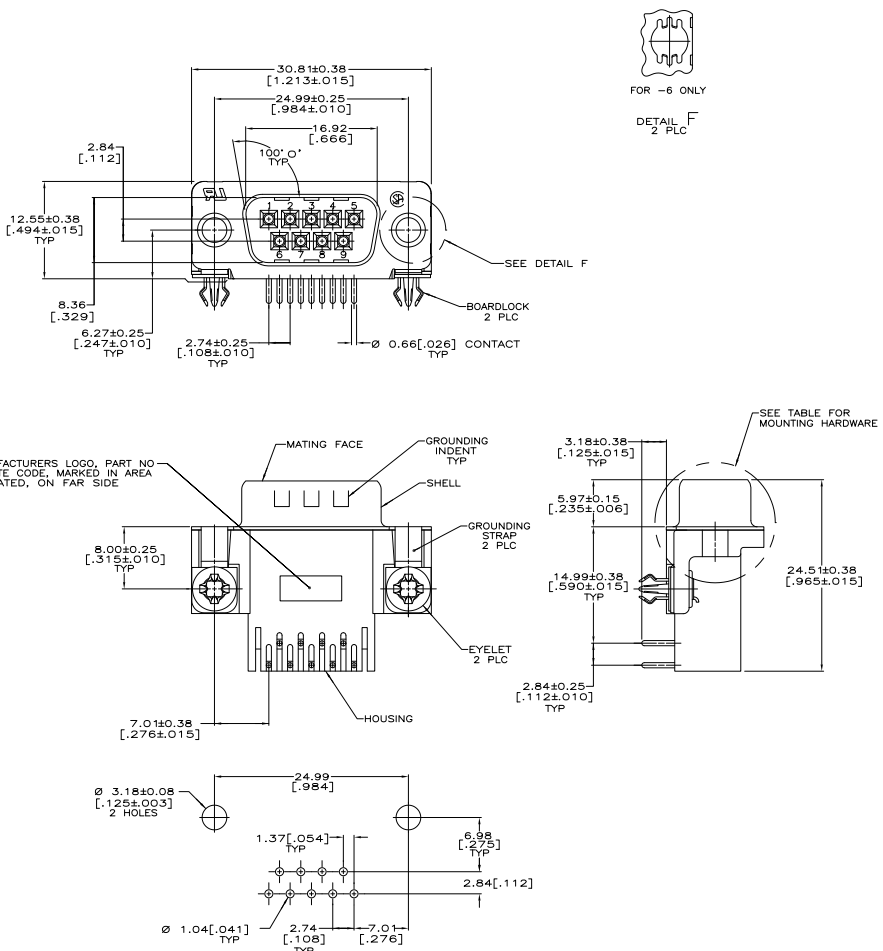
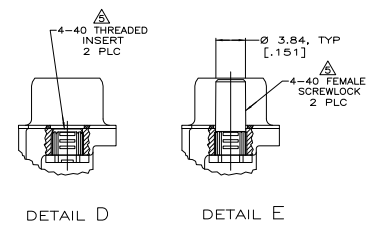


REV	DATE	DESCRIPTION	BY	CHK
A	3/24/07	REVISED PER ECO-06-028339	ZMR	EDB
AT	10/20/10	REVISED PER ECO-10-000444	KK	HMR



P.C. BOARD MOUNTING DIMENSIONS  
 P.C. BOARD THICKNESS: 1.57[.062]

- △ HOUSING: NYLON OR POLYESTER, FLAME RETARDANT, UL 94V-0 RATED, GLASS FILLED, BLACK.
- CONTACTS: BRASS.
- SHELL: CARBON STEEL.
- EYELETS: BRASS.
- BOARDLOCKS: COPPER ALLOY.
- SCREWLOCKS: ZINC.
- INSERTS: ZINC.
- △ CONTACTS: SEE TABLE
- SHELL: 2.54µm [0.00100] MIN TIN OVER 1.27µm [0.00050] MIN COPPER.
- EYELETS: 5.08µm [0.00200] MIN TIN OVER COPPER FLASH.
- BOARDLOCKS: 5.08µm [0.00200] MIN TIN OVER 1.27µm [0.00050] MIN NICKEL.
- SCREWLOCKS: CLEAR CHROMATE.
- INSERTS: CLEAR CHROMATE.
- △ GOLD PLATED FOR LENGTH OF 3.81 [150] MIN FROM MATING END, GOLD FLASH IN MATING AREA, 2.54µm [0.00100] MIN TIN FOR A LENGTH OF 3.56 [140] MIN FROM OPPOSITE END, BOTH OVER 1.27µm [0.00050] MIN NICKEL.
- △ GOLD PLATED FOR A LENGTH OF 3.81 [150] MIN FROM MATING END, 0.76µm [0.00030] MIN GOLD IN MATED AREA, 2.54µm [0.00100] MIN TIN FOR A LENGTH OF 3.56 [140] MIN FROM OPPOSITE END, BOTH OVER 1.27µm [0.00050] MIN NICKEL.
- OR  
 GOLD FLASH OVER PALLADIUM NICKEL PLATED FOR A LENGTH OF 3.81 [150] MIN FROM MATING END, 0.76µm [0.00030] MIN PALLADIUM NICKEL IN MATED AREA, 2.54µm [0.00100] MIN TIN FOR A LENGTH OF 3.56 [140] MIN FROM OPPOSITE END, BOTH OVER 1.27µm [0.00050] MIN NICKEL.
- △ SCREWLOCKS & INSERTS WILL WITHSTAND 4 IN LBS TORQUE & 20 LBS PULL OUT FORCE FROM MATING FACE SIDE.
- △ OBSOLETE PARTS: OBSOLETE CIS STREAMLINING PER D.RENAUD/D.SINISI



SEE DETAIL E	△	5747832-6
SEE DETAIL D	△	5747832-4
SEE DETAIL D	△	5747832-3
OBSOLETE		
MOUNTING HARDWARE	CONTACT FINISH	PART NUMBER

THIS DRAWING IS A CONTROLLED DOCUMENT.		REV A	DATE 03-28-07	BY ZMR	CHK EDB
DESIGNED BY	W. BULLISLEY	DATE	03-28-07		
DRAWN BY	M. WILSON	DATE	03-28-07		
CHECKED BY	J. H. HARRIS	DATE	03-28-07		
APPROVED BY	J. H. HARRIS	DATE	03-28-07		
DESCRIPTION	PLUG ASSEMBLY, SIZE 1, 9 POSITION, RIGHT ANGLE, FRONT METAL SHELL, 590 SERIES, BOARDLOCKS, HAMPLETE HD-20	REV	A1	DATE	03-28-07
CUSTOMER DRAWING	114-40010	REV	A1	DATE	03-28-07
TYCO ELECTRONICS CORPORATION		Harrisburg, PA 17105-3608			

**COPYRIGHT 2005  
 TYCO ELECTRONICS CORP  
 ALL RIGHTS RESERVED**