

4

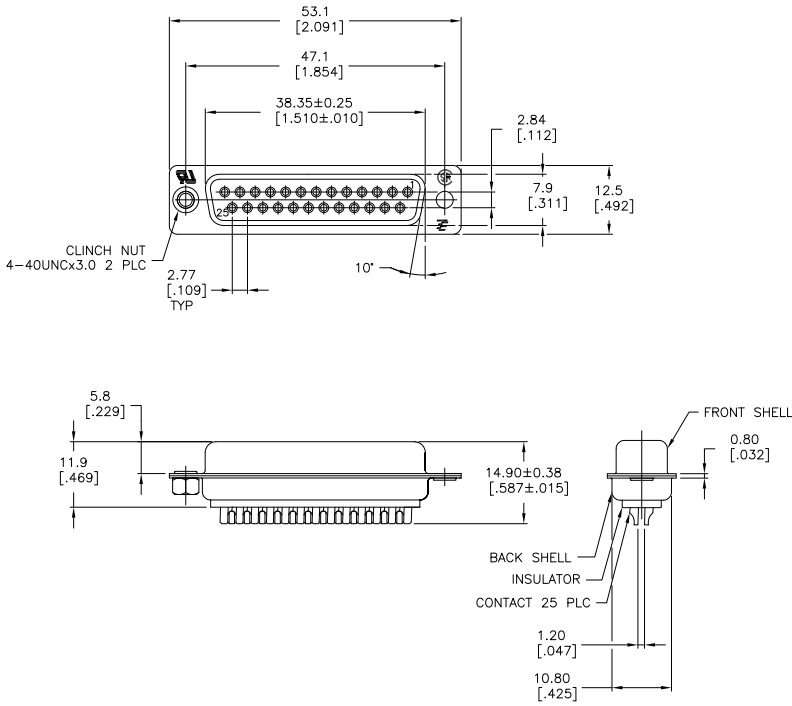
3

2

1

THIS DRAWING IS UNPUBLISHED. RELEASED FOR PUBLICATION. ALL RIGHTS RESERVED.

LOC		DIST		REVISIONS			
AD	00	F	LR	DESCRIPTION	DATE	BY	APPD
		V2		REVISED PER ECO-11-004587	11MAR11	RK	HMR



- 1 MATERIAL:
FRONT INSULATOR: PBT, 30 %GF, UL94V-0, BLACK COLOR
BACK INSULATOR: PBT, 30 %GF, UL94V-0, BLACK COLOR
CONTACT: BRASS
FRONT SHELL: STEEL
BACK SHELL: STEEL
CLINCH NUTS: BRASS
- 2 FINISH:
CONTACT: GOLD PLATING 0.00002[.000008] MIN ON CONTACT AREA 0.00229 [.000090] MIN TIN-LEAD PLATING ALL OVER 0.00127[.000050] MIN NICKEL
- 3 CONTACT: GOLD PLATING 0.00076[.000030] MIN ON CONTACT AREA 0.00229 [.000090] MIN TIN-LEAD PLATING ALL OVER 0.00127[.000050] MIN NICKEL
- 4 SHELL: TIN 0.0241[.000095] MIN FULL SHELL
- 5 SHELL: BLUE ZINC: 0.00508[.000200] - 0.00762[.000300] OVER ENTIRE SHELL
- 6 CONTACT: GOLD PLATING 0.00002[.000008] MIN ON CONTACT AREA 0.00229 [.000090] MIN TIN-COPPER PLATING ALL OVER 0.00127[.000050] MIN NICKEL
- 7 CLINCH NUTS: NICKEL PLATING .00305-.00508[.000120-.000200]
- 8 SPECIFICATION
ELECTRICAL CHARACTERISTICS: CURRENT RATING: 3 AMPERES
DIELECTRIC WITHSTANDING VOLTAGE: AC 1000V r.m.s
INSULATION RESISTANCE: 5000 MEGOHMS MINIMUM AT DC 500V
CONTACT RESISTANCE: 10 MILLIOHMS MAXIMUM.
- 9 ROHS 2002/95/EC COMPLIANT
- 10 RECEPTACLE ASSEMBLY MATES WITH ANY 25 POSITION PLUG IN AMPLIMITE SERIES
- 11 SOLDER CUP WILL ACCOMMODATE 20 MAX AWG WIRE.
- 12 CONTACT: GOLD PLATING 0.00076[.000030] MIN ON CONTACT AREA 0.00229[.000090] MIN TIN-COPPER ALL OVER 0.00127[.000050] MIN NICKEL PLATING

REV	DESCRIPTION	DATE	BY	APPD	REV	DESCRIPTION	DATE	BY	APPD
1	STANDARD	NO	△	△	△	5-747913-6			
2	STANDARD	NO	△	△	△	5-747913-4			
3	STANDARD	YES	△	△	△	5-747913-9			
4	STANDARD	NO	△	△	△	5-747913-5			
5	STANDARD	NO	△	△	△	5-747913-2			
6	STANDARD	YES	△	△	△	747913-9			
7	SUPERSEDED TO 5-747913-2	STANDARD	NO	△	△	747913-8			
8	SUPERSEDED TO 5-747913-6	STANDARD	NO	△	△	747913-6			
9	SUPERSEDED TO 5-747913-5	STANDARD	NO	△	△	747913-5			
10	SUPERSEDED TO 5-747913-4	STANDARD	NO	△	△	747913-4			
11	SUPERSEDED TO 5-747913-2	STANDARD	NO	△	△	747913-2			
	PACKAGING TYPE		△	△	△	CLINCH NUTS			
			△	△	△	CONTACTS			
			△	△	△	SHELLS			
			△	△	△	PART NO.			

THIS DRAWING IS A CONTROLLED DOCUMENT.

DIMENSIONS: mm [INCHES]	TOLERANCES UNLESS OTHERWISE SPECIFIED:	0 PLC ± .01	1 PLC ± 0.25	2 PLC ± 0.13	3 PLC ± 0.08	4 PLC ± .01	ANGLES ± .5°
MATERIAL	FINISH	SEE TABLE					

DESIGNER: M. BINNER	DATE: 04MAR03	TE Connectivity
CHK: R. BENDORF	DATE: 04MAR03	
DRAWN: R. BENDORF	DATE: 04MAR03	
PRODUCT SPEC:		
APPLICATION SPEC:		
WEIGHT:		
CUSTOMER DRAWING	SCALE: 2:1	SHEET: 1 of 1

RECEPTACLE ASSEMBLY, SOLDER CUP, SIZE 3, 25 POSN, HD-20, AMPLIMITE

SIZE: A2 CASE CODE: C=747913

RESTRICTED TO: V2

1471-9 (3/11)

747913

A