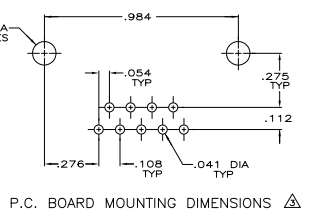
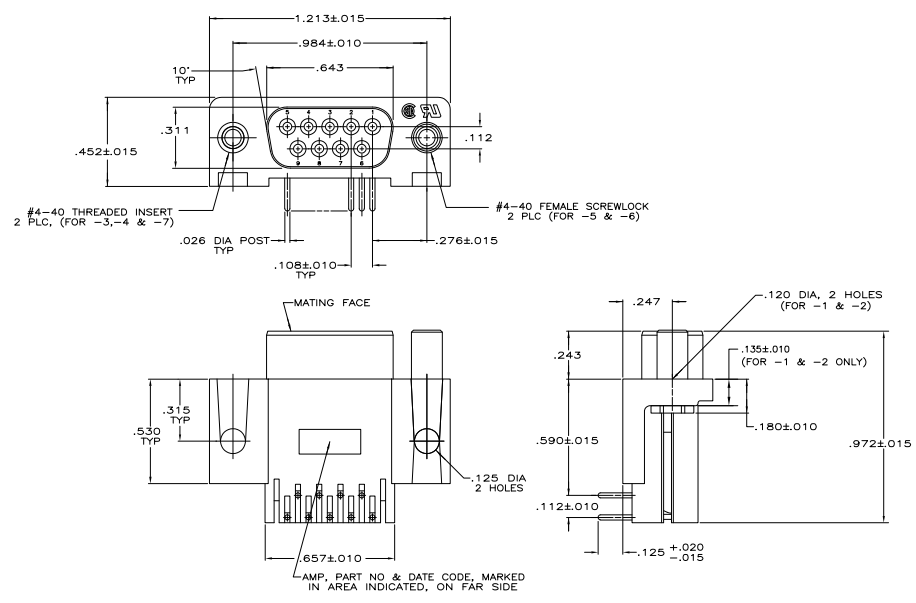


THE DRAWING IS UNPUBLISHED. RELEASED FOR INFORMATION. ALL RIGHTS RESERVED.

REV	DATE	DESCRIPTION	BY	CHK	APP
GP 00					
F		REV PER ECU-07-00087			19 JAN 07 CUN SB



- △ HOUSING: FLAME RETARDANT, 94V-0 RATED.
- △ GLASS FILLED, NYLON OR POLYESTER, COLOR: BLACK.
- △ CONTACTS: PHOS. BRONZE PER QQ-B-750.
- △ REFER TO APPLICATION SPEC FOR RECOMMENDED P.C. BOARD MOUNTING DIMENSIONS FOR AUTOMATIC INSERTION.
- △ HARDWARE: ZINC.
- △ HARDWARE: CLEAR CHROMATE.
- △ PLATED WITH GOLD FLASH FOR LENGTH OF .055 MIN FROM MATING END, WITH POINT OF MEASUREMENT .035 FROM MATING END OF CONTACT, .000100-.000200 TIN OR TIN-LEAD ON SOLDER END, ALL OVER .000050 NICKEL ON ENTIRE CONTACT.
- △ PLATED WITH .000030 GOLD FOR LENGTH OF .055 MIN FROM MATING END, WITH POINT OF MEASUREMENT .035 FROM MATING END OF CONTACT, .000100-.000200 TIN OR TIN-LEAD ON SOLDER END, ALL OVER .000050 NICKEL ON ENTIRE CONTACT.
- △ PLATED WITH .000010 GOLD FOR LENGTH OF .055 MIN FROM MATING END, WITH POINT OF MEASUREMENT .035 FROM MATING END OF CONTACT, .000100-.000200 TIN OR TIN-LEAD ON SOLDER END, ALL OVER .000050 NICKEL ON ENTIRE CONTACT.

REMARKS	CONTACT FINISH	PART NUMBER
OBSOLETE WITH INSERTS	△	747459-7
OBSOLETE WITH SCREWLOCKS	△	747459-6
OBSOLETE WITH SCREWLOCKS	△	747459-5
OBSOLETE WITH INSERTS	△	747459-4
OBSOLETE WITH INSERTS	△	747459-3
OBSOLETE WITH .120 DIA HOLE	△	747459-2
OBSOLETE WITH .120 DIA HOLE	△	747459-1

THIS DRAWING IS A CONTROLLED DOCUMENT.		REV. CONTROLLED	DATE	7-28-87	Control	Yeco Electronics Corporation
DESIGNED BY	DESIGNED	DATE	7-28-87	Control	Harrisburg, PA 17105-3608	
DRAWN BY	DRAWN	DATE	8-13-87	Control		
INSTRUMENTS	INSTRUMENTS					
REVISIONS	REVISIONS					
1	108-40025	REVISED				RECEPTACLE ASSY, SIZE 1, 9 POSN, RIGHT ANGLE, .590 SERIES, .026 DIA POSTS, AMP/PLATE/041-00
2	114-40015	REVISED				
3		REVISED				
4		REVISED				
5		REVISED				
6		REVISED				
7		REVISED				
8		REVISED				
9		REVISED				
10		REVISED				
11		REVISED				
12		REVISED				
13		REVISED				
14		REVISED				
15		REVISED				
16		REVISED				
17		REVISED				
18		REVISED				
19		REVISED				
20		REVISED				
21		REVISED				
22		REVISED				
23		REVISED				
24		REVISED				
25		REVISED				
26		REVISED				
27		REVISED				
28		REVISED				
29		REVISED				
30		REVISED				
31		REVISED				
32		REVISED				
33		REVISED				
34		REVISED				
35		REVISED				
36		REVISED				
37		REVISED				
38		REVISED				
39		REVISED				
40		REVISED				
41		REVISED				
42		REVISED				
43		REVISED				
44		REVISED				
45		REVISED				
46		REVISED				
47		REVISED				
48		REVISED				
49		REVISED				
50		REVISED				
51		REVISED				
52		REVISED				
53		REVISED				
54		REVISED				
55		REVISED				
56		REVISED				
57		REVISED				
58		REVISED				
59		REVISED				
60		REVISED				
61		REVISED				
62		REVISED				
63		REVISED				
64		REVISED				
65		REVISED				
66		REVISED				
67		REVISED				
68		REVISED				
69		REVISED				
70		REVISED				
71		REVISED				
72		REVISED				
73		REVISED				
74		REVISED				
75		REVISED				
76		REVISED				
77		REVISED				
78		REVISED				
79		REVISED				
80		REVISED				
81		REVISED				
82		REVISED				
83		REVISED				
84		REVISED				
85		REVISED				
86		REVISED				
87		REVISED				
88		REVISED				
89		REVISED				
90		REVISED				
91		REVISED				
92		REVISED				
93		REVISED				
94		REVISED				
95		REVISED				
96		REVISED				
97		REVISED				
98		REVISED				
99		REVISED				
100		REVISED				