

4

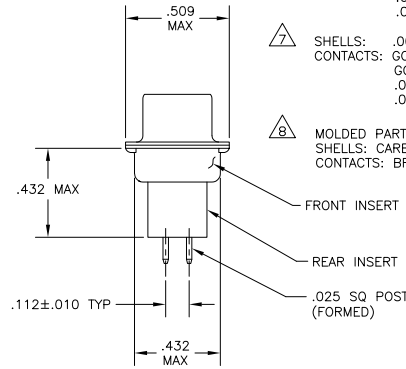
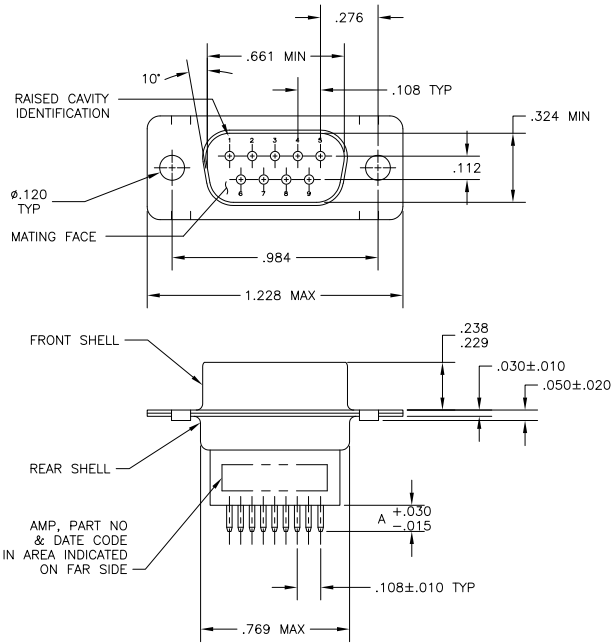
3

2

1

THIS DRAWING IS UNPUBLISHED. RELEASED FOR PUBLICATION  
 © COPYRIGHT 2005 BY TYCO ELECTRONICS CORPORATION. ALL RIGHTS RESERVED.

LOC	DIST	REVISIONS					
GP	00	P	LTR	DESCRIPTION	DATE	MIN	APD
		Y		REVISED PER ECO-10-000073	22JAN2010	CJV	SB



1. NOTE DELETED.
2. NOTE DELETED.
3. NOTE DELETED.
4. NOTE DELETED.
5. NOTE DELETED.
6. SHELLS: .000200 MIN ZINC WITH YELLOW CHROMATE COATING.  
CONTACTS: .000030 MIN GOLD ON MATING END,  
.000100 MIN TIN-LEAD ON SOLDER END, BOTH OVER  
.000050 MIN NICKEL.  
OR  
GOLD FLASH OVER PALLADIUM-NICKEL  
.000030 MIN TOTAL ON MATING END,  
.000100 MIN TIN-LEAD ON SOLDER END, BOTH OVER  
.000050 MIN NICKEL.
7. SHELLS: .000200 MIN ZINC WITH YELLOW CHROMATE COATING.  
CONTACTS: GOLD PLATED FOR LENGTH OF .150 MIN FROM MATING END,  
GOLD FLASH IN MATED AREA,  
.000100 MIN TIN-LEAD ON SOLDER END, ALL OVER  
.000050 MIN NICKEL.
8. MOLDED PARTS: GLASS-FILLED NYLON, UL 94V-0 RATED, BLACK.  
SHELLS: CARBON STEEL  
CONTACTS: BRASS

SUPSD BY 205733-7	△	.188	205733-8
SUPSD BY 745410-5	△	.188	205733-7
SUPSD BY 745410-5	△	.651	205733-6
SUPSD BY 205733-3	△	.651	205733-5
SUPSD BY 745410-1	△	.427	205733-4
SUPSD BY 205733-1	△	.427	205733-3
	△	.125	205733-2
	△	.125	205733-1
CONTACT FINISH	A	PART NUMBER	

THIS DRAWING IS A CONTROLLED DOCUMENT.		DIM J. POLIGNONE OK E. BRANT DATE 11/14/05 PRODUCT SPEC 108-40025 APPLICATION SPEC 114-40013 WEIGHT - CUSTOMER DRAWING	Tyco Electronics Corporation Harrisburg, Pa 17105-3608 PLUG ASSEMBLY, SIZE 1, 9 POSN, VERTICAL AMPLIMITE HDP	SIZE CASE CODE DRAWING NO A2 00779 C-205733 RESTRICTED TO SCALE NTS SHEET 1 OF 1 REV Y
DIMENSIONS: INCHES 0 PLG ± .005 1 PLG ± .005 2 PLG ± .005 3 PLG ± .005 4 PLG ± .005 ANGLES ± .005	TOLERANCES UNLESS OTHERWISE SPECIFIED: .005 .010 .015 .020 .030 .040 .050 .060 .070 .080 .090 .100 .125 .150 .200 .250 .300 .375 .450 .500 .625 .750 .875 1.000 1.250 1.500 1.750 2.000 2.500 3.000 3.750 4.500 5.000	MATERIAL △ FINISH △△	DATE 11/14/05 DRAWING NO C-205733 SHEET 1 OF 1 REV Y	

AMP 1471-9 REV 31MM2000

205733

A