

4

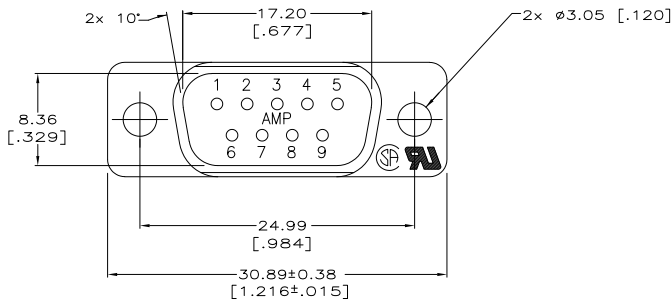
3

2

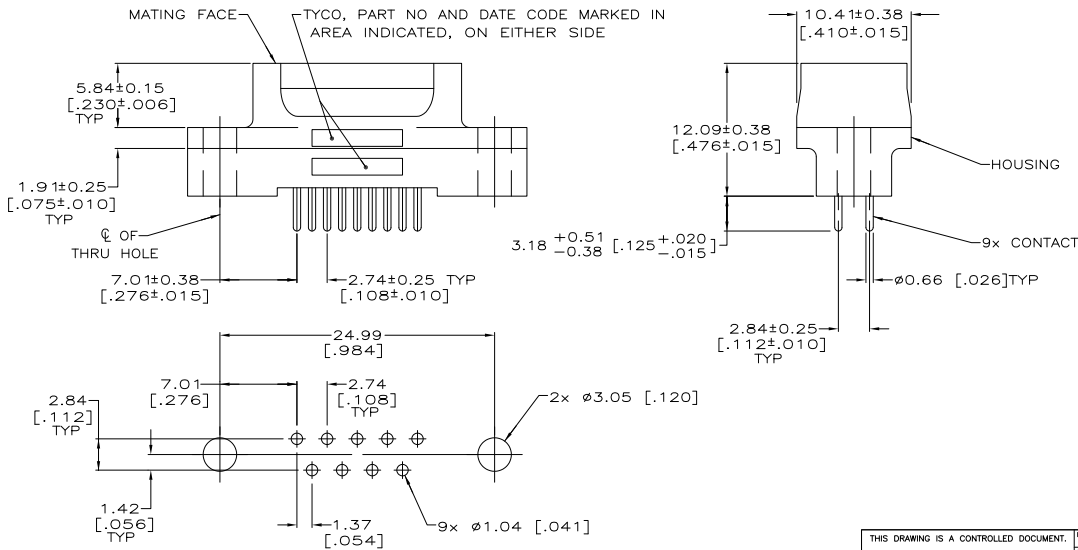
1

THIS DRAWING IS UNPUBLISHED. RELEASED FOR PUBLICATION. ALL RIGHTS RESERVED.

LOC	DIST	REVISIONS		DATE	BY	APP'D
GP	00	F	LR			
		A1	REVISED PER ECO-11-004835	11MAR11	RK	HMR



- △ HOUSING: BLACK POLYESTER, UL 94V-0 RATED. CONTACTS: BRASS.
- △ 2 GOLD PLATED FOR LENGTH OF 3.81[.150] MIN FROM MATING END, GOLD FLASH IN MATED AREA, 2.54µm [.000100] MIN TIN ON SOLDER END, BOTH OVER 1.27µm [.000050] MIN NICKEL.
- △ 3 GOLD PLATED FOR LENGTH OF 3.81[.150] MIN FROM MATING END, 0.76µm [.000030] MIN GOLD IN MATED AREA, 2.54µm [.000100] MIN TIN ON SOLDER END, BOTH OVER 1.27µm [.000050] MIN NICKEL.  
OR  
GOLD FLASH OVER PALLADIUM NICKEL PLATED FOR LENGTH OF 3.81 [.150] MIN FROM MATING END, 0.76µm [.000030] MIN PALLADIUM NICKEL IN MATED AREA, 2.54µm [.000100] MIN TIN ON SOLDER END, BOTH OVER 1.27µm [.000050] MIN NICKEL.



RECOMMENDED PC BOARD MOUNTING DIMENSIONS

△	5208006-2
△	5208006-1
CONTACT FINISH	PART NO

THIS DRAWING IS A CONTROLLED DOCUMENT.		DRN	G. PETERS	12SEP05
		CHK	S. BOLASH	12SEP05
		APP'D	M. WALMSLEY	12SEP05
DIMENSIONS: mm [INCHES]		PRODUCT SPEC	108-40025	
TOLERANCES UNLESS OTHERWISE SPECIFIED:		APPLICATION SPEC	-	
0 PL	±	WEIGHT	-	
1 PL	±	CUSTOMER DRAWING	A2	
2 PL	±0.13 (.005)	SCALE	4:1	
3 PL	±	SHEET	1 of 1	
4 PL	±	REV	A1	
ANGLES	±			
MATERIAL	△			
FINISH	△ 3			

TE Connectivity

PLUG ASSEMBLY, SIZE 1,

9 POSN, VERTICAL, AMPLIMITE HD-20

SIZE CASE CODE DRAWING NO

A2 00779 C=5208006

RESTRICTED TO