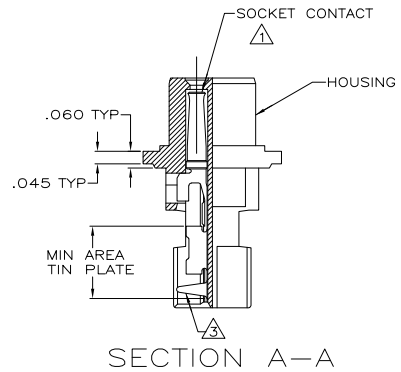
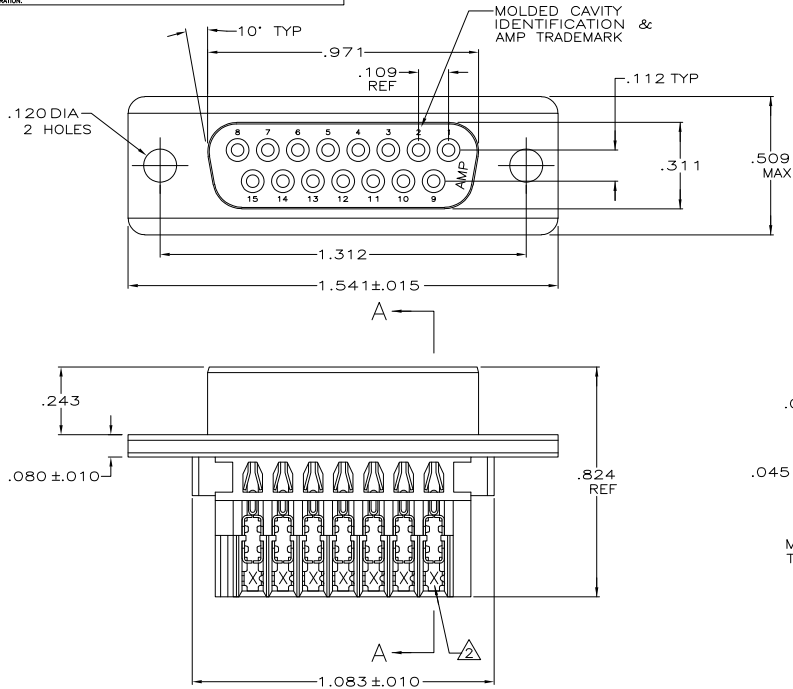


THIS DRAWING IS UNPUBLISHED. RELEASED FOR PUBLICATION
 © COPYRIGHT BY TYCO ELECTRONICS CORPORATION. ALL RIGHTS RESERVED.

LOC	DIST	REVISIONS				
GP	00	P	LTR	DATE	MIN	APD
		M1	REVISED PER ECO-04-020813	27OCT06	JDP	CWR



- ① HOUSING FULLY LOADED WITH CONTACTS.
- ② NUMBER ON CONTACT INDICATES WIRE RANGE.
- ③ CONTACT INSULATE RANGE: .060 MAXIMUM O.D.
- ④ CONTACTS PLATED .000030 GOLD ON MATING END FOR .100 MIN LENGTH. .000100-.000200 THICK BRIGHT TIN OR BRIGHT TIN-LEAD IN AREA SHOWN. .000050 THICK NICKEL UNDERPLATE ON ENTIRE CONTACT.
- ⑤ CONTACTS PLATED WITH GOLD FLASH ON MATING END FOR .100 MIN LENGTH. .000100-.000200 THICK BRIGHT TIN OR BRIGHT TIN-LEAD IN AREA SHOWN. .000030 THICK NICKEL UNDERPLATE ON ENTIRE CONTACT.
- ⑥ CONTACTS PLATED .000030 GOLD ON MATING END FOR .100 MIN LENGTH .000100-.000200 THICK MATTE TIN IN AREA SHOWN. .000050 THICK NICKEL UNDERPLATE ON ENTIRE CONTACT.
- ⑦ CONTACTS PLATED WITH GOLD FLASH ON MATING END FOR .100 MIN LENGTH. .000100-.000200 THICK BRIGHT TIN IN AREA SHOWN. .000030 THICK NICKEL UNDERPLATE ON ENTIRE CONTACT.
- ⑧ HOUSING: 94V-0 RATED THERMOPLASTIC, BLACK.

FINISH	AWG WIRE RANGE	PART NUMBER
①	#22-26	745205-8
②	#22-26	745205-7
③	#20-22	745205-6
④	#22-26	745205-5
⑤	#26-30	745205-4
⑥	#20-22	745205-3
⑦	#22-26	745205-2
⑧	#26-30	745205-1

THIS DRAWING IS A CONTROLLED DOCUMENT. DIM 4-9-90
 J. GALLUCCI BC
 W. LENKER 4-21-90
 NAME: Tyco Electronics Corporation, Harrisburg, PA 17105-3608

PRODUCT SPEC: 108-40011
 APPLICATION SPEC: 114-40002
 RIGHT: -

SIZE: A2
 CASE CODE: 00779
 DRAWING NO: C=745205

RESTRICTED TO: -

CUSTOMER DRAWING SCALE: 4:1 SHEET: 1 of 1 REV: M1

AMP 1471-9 REV 31MM2000

745205

A