

4

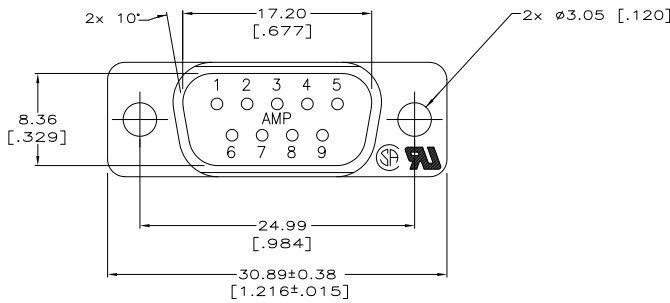
3

2

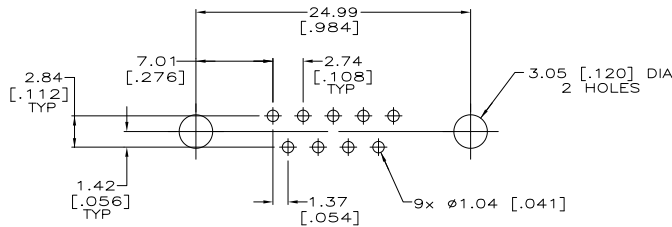
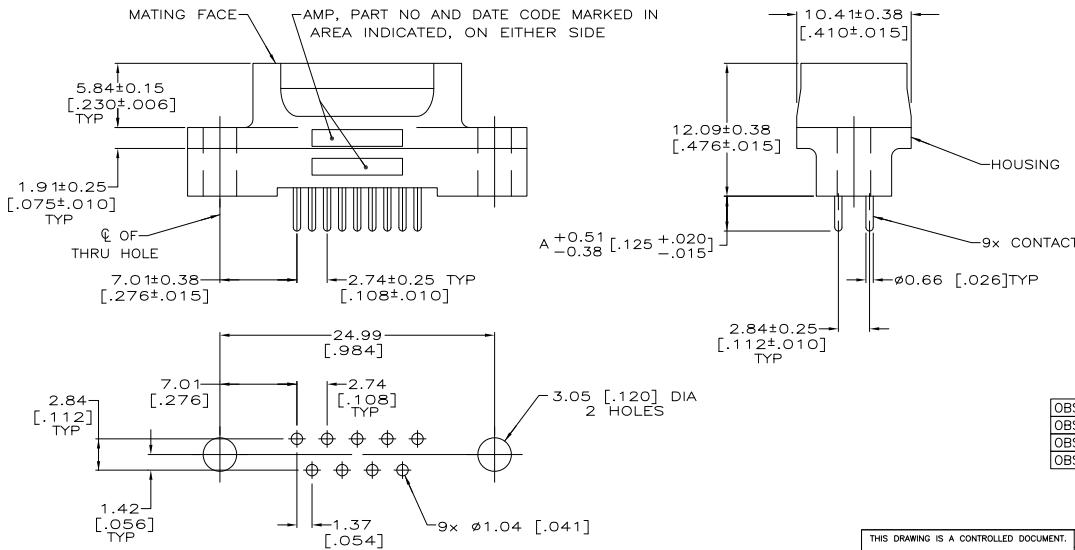
1

THIS DRAWING IS UNPUBLISHED. RELEASED FOR PUBLICATION. ALL RIGHTS RESERVED.

LOC	DIST	REVISIONS		DATE	BY	APP'D
GP	00	F	LR			
		L1		REVISED PER ECO-11-004835	11MAR11	RK HMR



- △ HOUSING: BLACK POLYESTER, UL 94V-0 RATED. CONTACTS: BRASS PER MIL-C-50.
- △ GOLD PLATED PER MIL-G-45204, TIN PLATING PER MIL-T-10727, BOTH OVER NICKEL PLATING PER QQ-N-290.
- △ GOLD PLATED FOR LENGTH OF 3.81[.150] MIN FROM MATING END, GOLD FLASH IN MATED AREA, 2.54µm [.000100] MIN TIN OR TIN-LEAD FOR A LENGTH OF DIMENSION A FROM OPPOSITE END, ALL OVER 1.27µm [.000050] MIN NICKEL.
- △ GOLD PLATED FOR LENGTH OF 3.81[.150] MIN FROM MATING END, 0.76µm [.000030] MIN GOLD IN MATED AREA, 2.54µm [.000100] MIN TIN OR TIN-LEAD FOR A LENGTH OF DIMENSION A FROM OPPOSITE END, ALL OVER 1.27µm [.000050] MIN NICKEL. OR GOLD FLASH OVER PALLADIUM NICKEL PLATED FOR LENGTH OF 3.81 [.150] MIN FROM MATING END, 0.76µm [.000030] MIN PALLADIUM NICKEL IN MATED AREA, 2.54µm [.000100] MIN TIN OR TIN-LEAD FOR A LENGTH OF DIMENSION A FROM OPPOSITE END, BOTH OVER 1.27µm [.000050] MIN NICKEL.
- △ SEE RESTRICTED CUSTOMER DRAWING: 208006-6.



RECOMMENDED PC BOARD MOUNTING DIMENSIONS

OBSOLETE	-	-	△	
OBSOLETE	6.35 [.250]	△	△	208006-5
OBSOLETE	4.32 [.170]	△	△	208006-4
OBSOLETE	4.32 [.170]	△	△	208006-3
	3.18 [.125]	△	△	208006-2
	3.18 [.125]	△	△	208006-1
	A		CONTACT FINISH	PART NUMBER

THIS DRAWING IS A CONTROLLED DOCUMENT.

DIMENSIONS: mm [INCHES]	TOLERANCES UNLESS OTHERWISE SPECIFIED:	0 PLG ± .01	1 PLG ± .01	2 PLG ± .015 (.005)	3 PLG ± .01	4 PLG ± .01	ANGLES ± .5°
MATERIAL	FINISH	DRW: J. POLIGNONE	CHK: F. BRIANT	DATE: 108-40025	APP: F. BRIANT	PRODUCT SPEC: 108-40025	APPLICATION SPEC: -
TE Connectivity				PLUG ASSEMBLY, SIZE 1, 9 POSN, VERTICAL, AMPLIMITE HD-20			
CUSTOMER DRAWING		SIZE: A2	QTY CODE: 00779	DRAWING NO: C=208006	RESTRICTED TO: -	SCALE: 4:1 SHEET: 1 of 1 REV: L1	