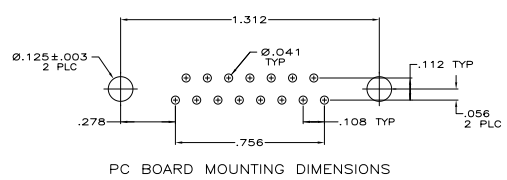
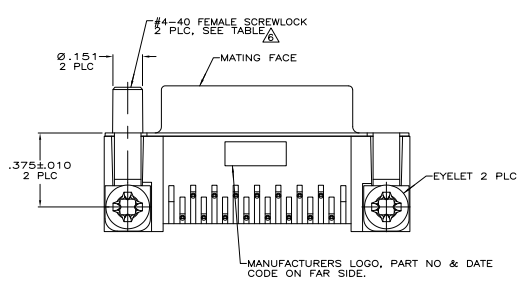
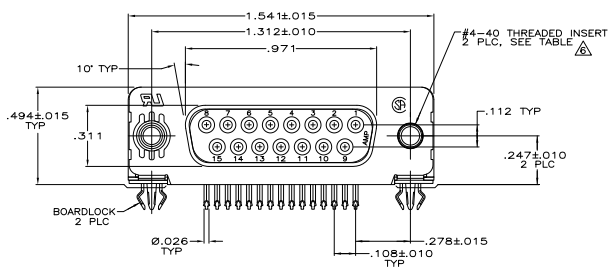


REV	DATE	DESCRIPTION	BY	CHK	APP
00					
A2		REVISED PER EDD-11-004835	11MMR11	RK	HMR



- CONNECTOR MATES WITH ANY 25 POSN PLUG IN AMPLIMITE SERIES.
- MOLDED PARTS: FLAME RETARDANT 94V-0 RATED THERMOPLASTIC, BLACK.  
SHELL: CARBON STEEL.  
CONTACTS: PHOSPHOR BRONZE.  
EYELETS: BRASS.  
SCREWLOCKS: ZINC.  
INSERTS: ZINC.  
BOARDLOCKS: COPPER ALLOY.
- SHELL: .000100 MIN TIN OVER .000050 MIN COPPER.  
CONTACTS: SEE TABLE.  
EYELETS: .000100 MIN TIN OVER COPPER FLASH.  
BOARDLOCKS: .000150 MIN TIN OVER .000050 MIN NICKEL.  
INSERTS AND SCREWLOCKS: CLEAR CHROMATE.
- GOLD FLASH FOR A DISTANCE OF .100 MIN FROM MATING END, .000100 MIN TIN ON TERMINATION END, ALL OVER .000050 MIN NICKEL ON ENTIRE CONTACT.
- .000030 GOLD FOR A DISTANCE OF .100 MIN FROM MATING END, .000100 MIN TIN ON TERMINATION END, ALL OVER .000050 MIN NICKEL ON ENTIRE CONTACT.
- SCREWLOCKS & INSERTS WILL WITHSTAND 6 IN-LBS TORQUE & 20 LBS PULL OUT FORCE FROM MATING FACE SIDE.
- DIMENSION APPLIES FROM CENTER OF CONTACTS.
- SPECIAL PACKAGING REQUIRED.
- OBSOLETE PARTS: OBSOLETE CIS STREAMLINING PER D.RENAUD/D.SINISI

OBSELETE	THREADED INSERTS	△	△ 1-5747845-1
	FEMALE SCREWLOCKS	△	5747845-6
	FEMALE SCREWLOCKS	△	5747845-5
	THREADED INSERTS	△	5747845-4
	THREADED INSERTS	△	5747845-3
OBSELETE	.125 DIA HOLES	△	5747845-2
	MOUNTING HARDWARE		PART NUMBER

THIS DRAWING IS A CONTROLLED DOCUMENT. DATE: 03-28-93  
 CONTROLLED BY: J. BOLASH DATE: 04-29-93  
 CONTROLLED BY: M. WILMSLEY DATE: 04-29-93

**TE Connectivity**

RECEPTACLE ASSEMBLY, SIZE 2, 15 POSITION, RIGHT ANGLE, FRONT METAL SHELL, 318 SERIES, 025 DIA POSTS, BOARDLOCKS, AMPLIMITE HD-20

108-40025  
 114-40010

DATE: 00779 ©=5747845

CUSTOMER DRAWING

SIZE: 4.1 SHEET: 1 OF 1 REV: A2