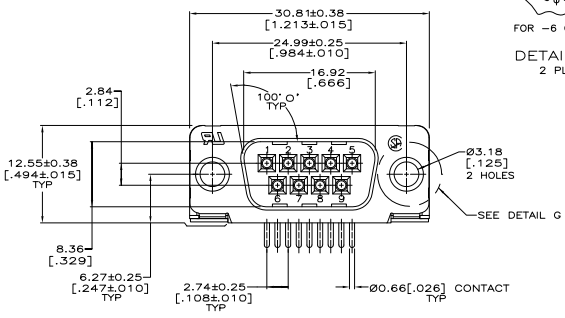
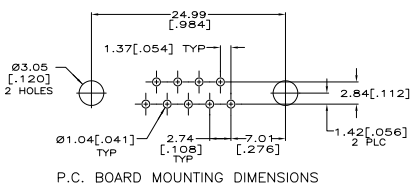
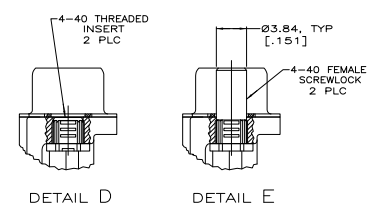
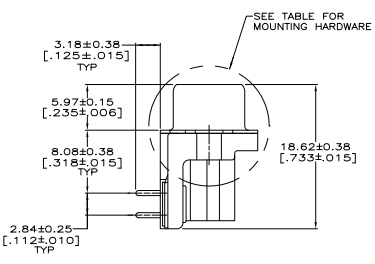
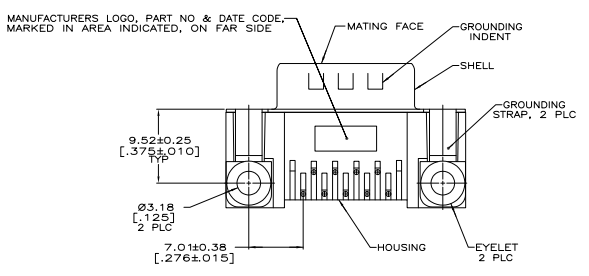


REV	DATE	DESCRIPTION	BY	CHK	APP
00					
A		REVISED PER EDO-06-028339	J/AMU/DT	ZMREDB	



- △ HOUSING: NYLON OR POLYESTER, FLAME RETARDANT, UL 94V-0 RATED, GLASS FILLED, BLACK.
- CONTACTS: BRASS.
- SHELL: CARBON STEEL.
- EYELETS: BRASS.
- SCREWLOCKS AND INSERTS: ZINC.
- △ CONTACTS: SEE TABLE.
- SHELL: 2.54µm [0.000100] MIN TIN OVER 1.27µm [0.000050] MIN COPPER.
- EYELETS: 5.08µm [0.000200] MIN TIN OVER COPPER FLASH.
- SCREWLOCKS AND INSERTS: CLEAR CHROMATE.
- △ GOLD PLATED FOR A LENGTH OF 3.81 [150] MIN FROM MATING END, GOLD FLASH IN MATED AREA, 2.54µm [0.000100] MIN TIN FOR A LENGTH OF 3.56 [140] MIN FROM OPPOSITE END, BOTH OVER 1.27µm [0.000050] MIN NICKEL.
- △ GOLD PLATED FOR A LENGTH OF 3.81 [150] MIN FROM MATING END, 0.76µm [0.000030] MIN GOLD IN MATED AREA, 2.54µm [0.000100] MIN TIN FOR A LENGTH OF 3.56 [140] MIN FROM OPPOSITE END, ALL OVER 1.27µm [0.000050] MIN NICKEL.
- OR-
- GOLD FLASH OVER PALLADIUM NICKEL PLATED FOR A LENGTH OF 3.81 [150] MIN FROM MATING END, 0.76µm [0.000030] MIN PALLADIUM NICKEL IN MATED AREA, 2.54µm [0.000100] MIN TIN FOR A LENGTH OF 3.56 [140] MIN FROM OPPOSITE END, ALL OVER 1.27µm [0.000050] MIN NICKEL.



SEE DETAIL	DESCRIPTION	PART NUMBER
SEE DETAIL E	CONTACT FINISH	5747250-6
SEE DETAIL D	CONTACT FINISH	5747250-4
	CONTACT FINISH	5747250-3
	CONTACT FINISH	5747250-2

**COPYRIGHT 2005  
 TYCO ELECTRONICS CORP  
 ALL RIGHTS RESERVED**

THIS DRAWING IS A CONTROLLED DOCUMENT	DATE	BY	CHK	APP	REV	DESCRIPTION	REVISIONS
108-40025	04-12-01	J/AMU/DT	ZMREDB			PLUG ASSEMBLY, SIZE 1, 9 POSITION, RIGHT ANGLE, FRONT METAL SHELL, 316 SERIES, AMPULITE, HD-20	
114-40010							
A100779							