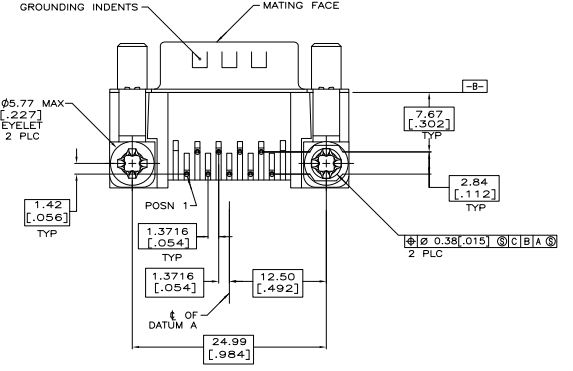
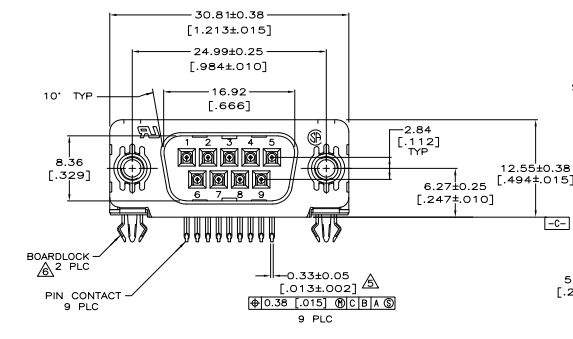
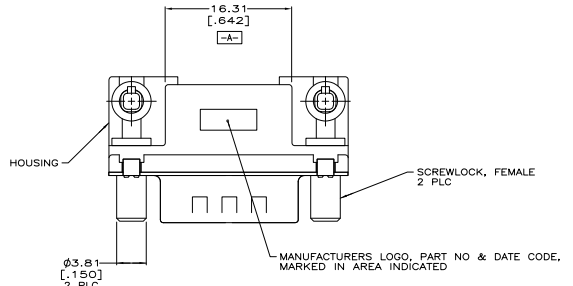
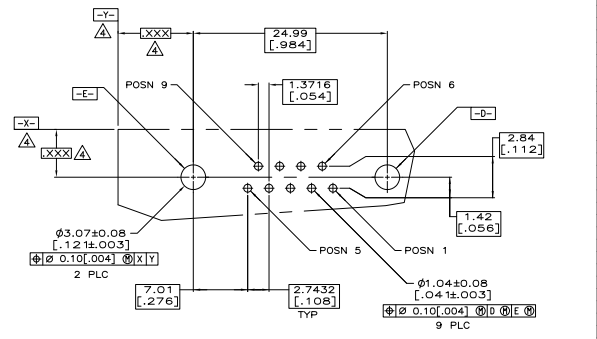


REV	DATE	DESCRIPTION	BY	CHK
00				
A		REVISED PER ECO-06-028339	3/24/07	ZMR/EDB



- △ HOUSING: NYLON, THERMOPLASTIC, UL 94V0 RATED, BLACK; SHELL: CARBON STEEL; PIN CONTACTS: BRASS; EYELETS: BRASS; SCREWLOCKS: ZINC; BOARDLOCKS: COPPER ALLOY.
- △ PIN CONTACTS: GOLD PLATED FOR A LENGTH OF 3.81 [150] MIN FROM MATING END, 0.76µm [0.00030] MIN GOLD IN MATED AREA, 2.54µm [0.00100] MIN TIN FOR A LENGTH OF 3.56 [140] MIN FROM OPPOSITE END, BOTH OVER 1.27µm [0.00050] MIN NICKEL.
- OR-
- GOLD FLASH OVER PALLADIUM NICKEL PLATED FOR A LENGTH OF 3.81 [150] MIN FROM MATING END, 0.76µm [0.00030] MIN PALLADIUM NICKEL IN MATED AREA, 2.54µm [0.00100] MIN TIN FOR A LENGTH OF 3.56 [140] MIN FROM OPPOSITE END, BOTH OVER 1.27µm [0.00050] MIN NICKEL.
- EYELETS: 2.54µm [0.00100] MIN TIN OVER COPPER FLASH.
- SHELL: 2.54µm [0.00100] MIN TIN OVER 1.27µm [0.00050] MIN COPPER.
- SCREWLOCKS: CLEAR CHROMATE.
- BOARDLOCKS: 3.81µm [0.00150] MIN TIN OVER 1.27µm [0.00050] MIN NICKEL.
- △ PIN CONTACTS: GOLD PLATED FOR A LENGTH OF 3.81 [150] MIN FROM MATING END, GOLD FLASH IN MATED AREA, 2.54µm [0.00100] MIN TIN FOR A LENGTH OF 3.56 [140] MIN FROM OPPOSITE END, BOTH OVER 1.27µm [0.00050] MIN NICKEL.
- EYELETS: 2.54µm [0.00100] MIN TIN OVER COPPER FLASH.
- SHELL: 2.54µm [0.00100] MIN TIN OVER 1.27µm [0.00050] MIN COPPER.
- SCREWLOCKS: CLEAR CHROMATE.
- BOARDLOCKS: 3.81µm [0.00150] MIN TIN OVER 1.27µm [0.00050] MIN NICKEL.
- △ DATUMS AND BASIC DIMENSIONS ESTABLISHED BY CUSTOMER.
- △ POSITION TOLERANCE APPLIES AT CONTACT TIP.
- △ BOARDLOCKS WILL ACCEPT .062 MAX PRINTED CIRCUIT BOARD THICKNESS.
- 7. COMPATIBLE WITH TYPICAL HIGH TEMPERATURE SOLDERING APPLICATIONS TO A MAXIMUM OF 225° C FOR A MAXIMUM DURATION OF 90 SECONDS. TEMPERATURE TO BE MEASURED ON CONNECTOR SURFACE.



FINISH	5788793-2
PART NUMBER	5788793-1

**COPYRIGHT 2005  
 TYCO ELECTRONICS CORP  
 ALL RIGHTS RESERVED**

THIS DRAWING IS A CONTROLLED DOCUMENT		REV	DATE	BY	CHK
REV	DATE	BY	CHK		
00					
DIMENSIONS (mm INCHES)		UNLESS SPECIFIED	BY	DATE	
AS SHOWN		UNLESS SPECIFIED			
AS SHOWN		UNLESS SPECIFIED			
AS SHOWN		UNLESS SPECIFIED			
SEE TABLE					
CUSTOMER DRAWING		DATE	REV	BY	CHK
		4-1	1		A