

4

3

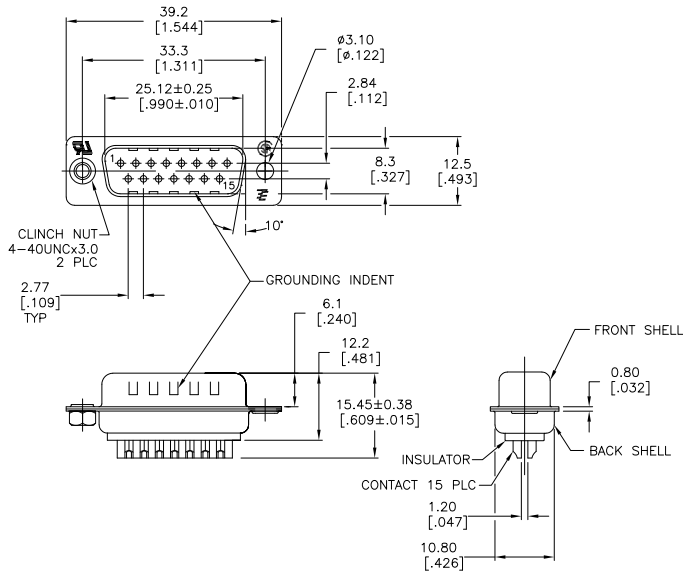
2

1

THIS DRAWING IS UNPUBLISHED. RELEASED FOR PUBLICATION.
 © COPYRIGHT - By - ALL RIGHTS RESERVED.

LOC	DIST	REVISIONS			
F	LNK	DESCRIPTION	DATE	BY	APPD
BD	00				
	V3	REVISED PER ECO-11-004587	11MAR11	RK	HMR

- 1 MATERIAL:
 FRONT INSULATOR: PBT, 30 %GF, UL94V-0, BLACK COLOR
 BACK INSULATOR: PBT, 30 %GF, UL94V-0, BLACK COLOR
 CONTACT: BRASS
 FRONT SHELL: STEEL
 BACK SHELL: STEEL
 CLINCH NUTS: BRASS
- 2 FINISH:
 CONTACT: GOLD PLATING 0.00002[.0000008] MIN ON CONTACT AREA 0.00229
 [.000090] MIN TIN-LEAD PLATING ALL OVER 0.00127[.000050] MIN NICKEL
- 3 CONTACT: GOLD PLATING 0.00076[.000030] MIN ON CONTACT AREA 0.00229
 [.000090] MIN TIN-LEAD PLATING ALL OVER 0.00127[.000050] MIN NICKEL
- 4 SHELL: TIN 0.0241[.000095] MIN FULL SHELL
- 5 SHELL: BLUE ZINC: 0.00508[.000200] - 0.00762[.000300] OVER ENTIRE SHELL
- 6 CONTACT: GOLD PLATING 0.00002[.0000008] MIN ON CONTACT AREA 0.00229
 [.000090] MIN TIN-COPPER PLATING ALL OVER 0.00127[.000050] MIN NICKEL
- 7 CLINCH NUTS: NICKEL PLATING .00305-.00508[.000120-.000200]
- 8 SPECIFICATION
 ELECTRICAL CHARACTERISTICS: CURRENT RATING: 3 AMPERES
 DIELECTRIC WITHSTANDING VOLTAGE: AC 1000V r.m.s
 INSULATION RESISTANCE: 5000 MEGOHMS MINIMUM AT DC 500V
 CONTACT RESISTANCE: 10 MILLIOHMS MAXIMUM.
- 9 ROHS 2002/95/EC COMPLIANT
- 10 PLUG ASSEMBLY MATES WITH ANY 15 POSITION RECEPTACLE IN AMPLIMITE SERIES
- 11 SOLDER CUP WILL ACCOMMODATE 20 MAX AWG WIRE.
- 12 CONTACT: GOLD PLATING 0.00076[.000030] MIN ON CONTACT AREA
 0.00229[.000090] MIN TIN-COPPER ALL OVER 0.00127[.000050]
 MIN NICKEL PLATING
- 13 OBSOLETE PARTS: OBSOLETE CIS STREAMLINING PER D.RENAUD/D.SINIS



REVISION	DESCRIPTION	DATE	BY	APPD	PART NO.
1	STANDARD	NO	NO		5-747908-4
2	STANDARD	YES	YES		5-747908-5
3	STANDARD	NO	YES		5-747908-5
4	STANDARD	NO	YES		5-747908-2
5	STANDARD	NO	YES		747908-9
6	SUPERSEDED TO 5-747908-8	STANDARD	YES	YES	747908-8
7	SUPERSEDED TO 5-747908-5	STANDARD	NO	YES	747908-5
8	SUPERSEDED TO 5-747908-4	STANDARD	NO	NO	747908-4
9	SUPERSEDED TO 5-747908-2	STANDARD	NO	YES	747908-2
	PACKAGING TYPE		CLINCH NUTS	GROUNDING INDENTS	CONTACTS SHELLS

THIS DRAWING IS A CONTROLLED DOCUMENT. DWG: M. BINDER 03MAR03
 CHK: R. BENDORF 03MAR03
 DATE: R. BENDORF 03MAR03
 NAME: R. BENDORF
 PRODUCT SPEC: PLUG ASSEMBLY, SOLDER CUP, SIZE 2, 15 POSN, HD=20, AMPLIMITE

DIMENSIONS: mm [INCHES]
 TOLERANCES UNLESS OTHERWISE SPECIFIED:
 0 PLC ± .05
 1 PLC ± 0.25
 2 PLC ± 0.15
 3 PLC ± 0.05
 4 PLC ± .05
 ANGLES ± .5°

MATERIAL: SEE TABLE
 FINISH: SEE TABLE

APPLICATION SPEC: A2
 WEIGHT: 0.0779g
 SIZE: 00779
 CASE CODE: C=747908
 DRAWING NO: 747908
 RESTRICTED TO: -

CUSTOMER DRAWING SCALE: 2:1 SHEET: 1 of 1 REV: V3

1471-9 (3/11)

747908

A