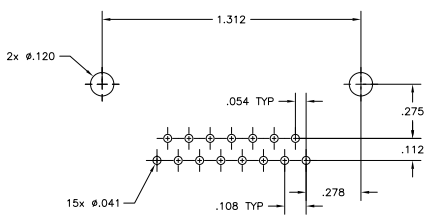
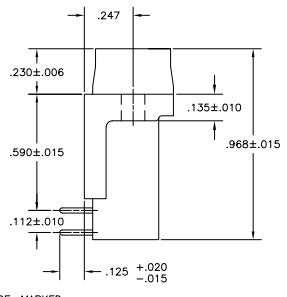
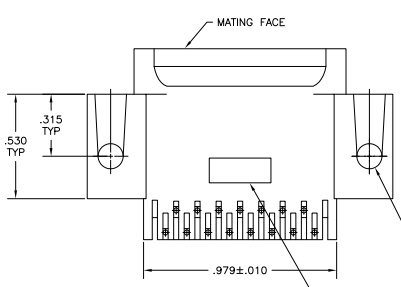
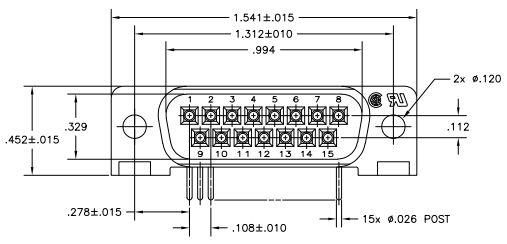


THIS DRAWING IS UNPUBLISHED. RELEASED FOR INFORMATION.  
 © 2005 TYCO ELECTRONICS CORPORATION. ALL RIGHTS RESERVED.

REVISONS		DATE	BY	APP'D
GP	00			
A		3/24/07	ZMR	EDB



P.C. BOARD MOUNTING DIMENSIONS  $\Delta$

- $\Delta$  HOUSING: FLAME RETARDANT, 94V-0 RATED, GLASS FILLED, NYLON OR POLYESTER, COLOR: BLACK  
CONTACTS: BRASS
- $\Delta$  REFER TO APPLICATION SPEC FOR RECOMMENDED P.C. BOARD MOUNTING DIMENSIONS FOR AUTOMATIC INSERTION.
- $\Delta$  CONTACTS: GOLD PLATED FOR A LENGTH OF .150 MIN FROM MATING END, .000030 MIN GOLD IN MATED AREA, .000100 MIN TIN ON SOLDER END, ALL OVER .000050 MIN NICKEL ON ENTIRE CONTACT.  
-OR-  
GOLD FLASH OVER PALLADIUM NICKEL PLATED FOR A LENGTH OF .150 MIN FROM MATING END, .000030 MIN PALLADIUM NICKEL IN MATED AREA, .000100 MIN TIN ON SOLDER END, ALL OVER .000050 MIN NICKEL.

TYCO, PART NO & DATE CODE, MARKED IN AREA INDICATED ON FAR SIDE.

**COPYRIGHT 2005  
 TYCO ELECTRONICS CORP  
 ALL RIGHTS RESERVED**

THIS DRAWING IS A CONTROLLED DOCUMENT.		DESIGNED BY: J. PETERS	DATE: 11/29/03	REVISED BY: J. PETERS	DATE: 11/29/03	REVISED BY: J. PETERS	DATE: 11/29/03	REVISED BY: J. PETERS	DATE: 11/29/03	REVISED BY: J. PETERS	DATE: 11/29/03	REVISED BY: J. PETERS	DATE: 11/29/03
DRAWN BY: J. PETERS		CHECKED BY: J. PETERS	DATE: 11/29/03	APPROVED BY: J. PETERS		DATE: 11/29/03		APPROVED BY: J. PETERS		DATE: 11/29/03		APPROVED BY: J. PETERS	
PART NUMBER: 5747468-2		TYCO ELECTRONICS CORPORATION		HARRISBURG, PA 17105-3608		PLUG ASSY, SIZE 2, 15 POSN, RIGHT ANGLE, 590 SERIES, .026 DIA POSTS, AMPLIMITE HC-20		SIZE: 114-40015		DRAWING NO: 108-40025		CUSTOMER DRAWING: A100779 (G)=5747468	
SCALE: 1:1		SHEET: 1 OF 1		DATE: 3/1		REV: A		BY: A		APP'D: A		CHK'D: A	