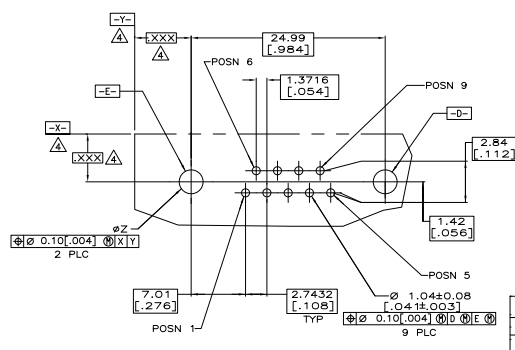
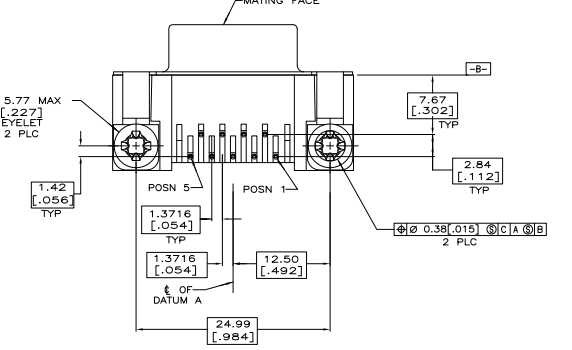
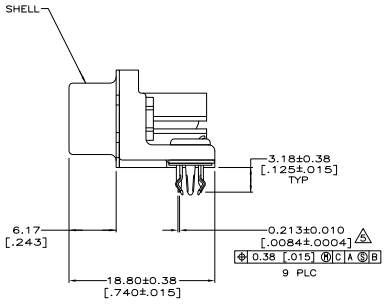
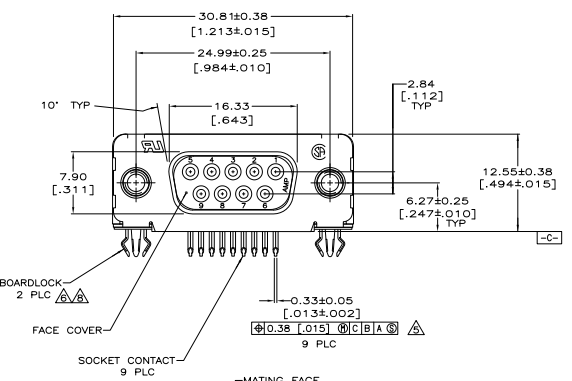
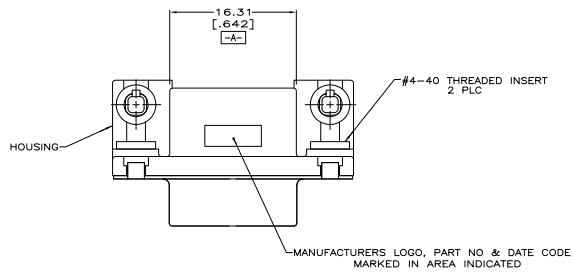


**COPYRIGHT 2005
 TE CONNECTIVITY CORP
 ALL RIGHTS RESERVED**

REV	DATE	DESCRIPTION	BY	CHK	APP
00		REVISED PER EDD-11-004835			



RECOMMENDED PC BOARD LAYOUT
 1.57 [.062] PC BOARD THICKNESS

- ▲ HOUSING & FACE COVER: NYLON, THERMOPLASTIC, UL 94VO RATED, BLACK; SHELL: CARBON STEEL; SOCKET CONTACTS: PHOSPHOR BRONZE; EYELETS: BRASS; THREADED INSERTS: ZINC; BOARDLOCKS: COPPER ALLOY.
- ▲ SOCKET CONTACTS: GOLD PLATED FOR A LENGTH OF 1.27 [0.050] MIN FROM MATING END, 0.76mm [.00030] MIN GOLD IN MATED AREA, 2.54µm [.000100] MIN TIN FOR A LENGTH OF 3.56 [140] MIN FROM OPPOSITE END, BOTH OVER 1.27µm [.000050] MIN NICKEL.
- ▲ EYELETS: 2.54µm [.000100] MIN TIN OVER COPPER FLASH.
- ▲ SHELL: 2.54µm [.000100] MIN TIN OVER 1.27µm [.000050] MIN COPPER.
- ▲ THREADED INSERTS: CLEAR CHROMATE.
- ▲ BOARDLOCKS: 3.81µm [.000150] MIN TIN OVER 1.27µm [.000050] MIN NICKEL.
- ▲ SOCKET CONTACTS: GOLD PLATED FOR A LENGTH OF 1.27 [0.050] MIN FROM MATING END, GOLD FLASH IN MATED AREA, 2.54µm [.000100] MIN TIN FOR A LENGTH OF 3.56 [140] MIN FROM OPPOSITE END, BOTH OVER 1.27µm [.000050] MIN NICKEL.
- ▲ EYELETS: 2.54µm [.000100] MIN TIN OVER COPPER FLASH.
- ▲ SHELL: 2.54µm [.000100] MIN TIN OVER 1.27µm [.000050] MIN COPPER.
- ▲ BOARDLOCKS: 3.81µm [.000150] MIN TIN OVER 1.27µm [.000050] MIN NICKEL.
- ▲ DATUMS AND BASIC DIMENSIONS ESTABLISHED BY CUSTOMER.
- ▲ POSITION TOLERANCE APPLIES AT CONTACT TIP.
- ▲ BOARDLOCKS WILL ACCEPT .062 MAX PRINTED CIRCUIT BOARD THICKNESS.
- 7. COMPATIBLE WITH TYPICAL HIGH TEMPERATURE SOLDERING APPLICATIONS TO A MAXIMUM OF 225°C FOR A MAXIMUM DURATION OF 90 SECONDS. TEMPERATURE TO BE MEASURED ON CONNECTOR SURFACE.
- ▲ 5788796-4 DOES NOT HAVE BOARDLOCKS
- ▲ OBSOLETE PARTS: OBSOLETE CIS STREAMLINING PER D.RENAUD/D.SINISI

REV	DATE	DESCRIPTION	BY	CHK	APP
00		REVISED PER EDD-11-004835			

REV	DATE	DESCRIPTION	BY	CHK	APP
00		REVISED PER EDD-11-004835			

REV	DATE	DESCRIPTION	BY	CHK	APP
00		REVISED PER EDD-11-004835			

REV	DATE	DESCRIPTION	BY	CHK	APP
00		REVISED PER EDD-11-004835			

REV	DATE	DESCRIPTION	BY	CHK	APP
00		REVISED PER EDD-11-004835			

REV	DATE	DESCRIPTION	BY	CHK	APP
00		REVISED PER EDD-11-004835			

REV	DATE	DESCRIPTION	BY	CHK	APP
00		REVISED PER EDD-11-004835			