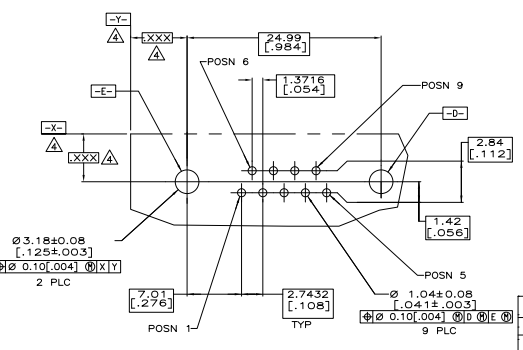
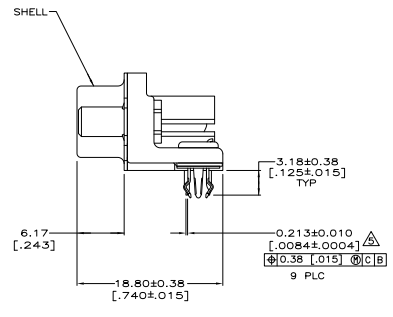
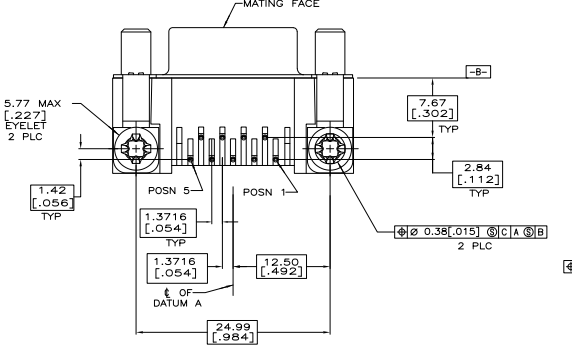
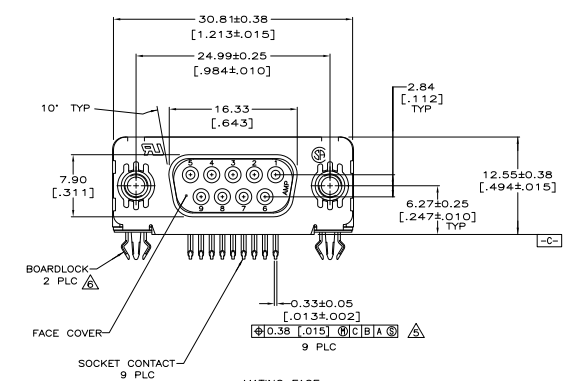
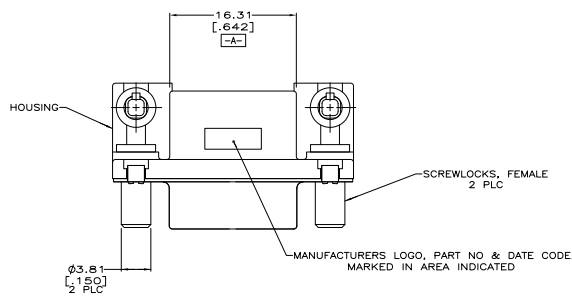


REV	DATE	DESCRIPTION	BY	CHKD
00				
01		REVISED PER ECO-08-015368	23MAY08	JDF/BS



- ▲ HOUSING & FACE COVER: NYLON, THERMOPLASTIC, UL 94V0 RATED, BLACK; SHELL: CARBON STEEL; SOCKET CONTACTS: PHOSPHOR BRONZE; EYELETS: BRASS; SCREWLOCKS: ZINC; BOARDLOCKS: COPPER ALLOY.
- ▲ SOCKET CONTACTS: GOLD PLATED FOR A LENGTH OF 1.27 [0.050] MIN FROM MATING END, 0.76µm [0.00030] MIN GOLD IN MATED AREA, 2.54µm[.000100] MIN TIN FOR A LENGTH OF 3.56[.140] MIN FROM OPPOSITE END, BOTH OVER 1.27µm[.000050] MIN NICKEL. EYELETS: 2.54µm [0.00100] MIN TIN OVER COPPER FLASH. SHELL: 2.54µm [0.00100] MIN TIN OVER 1.27µm [0.00050] MIN COPPER. SCREWLOCKS: CLEAR CHROMATE. BOARDLOCKS: 3.81µm [0.00150] MIN TIN OVER 1.27µm [0.00050] MIN NICKEL.
- ▲ SOCKET CONTACTS: GOLD PLATED FOR A LENGTH OF 1.27 [0.050] MIN FROM MATING END, GOLD FLASH IN MATED AREA, 2.54µm[.000100] MIN TIN FOR A LENGTH OF 3.56[.140] MIN FROM OPPOSITE END, BOTH OVER 1.27µm[.000050] MIN NICKEL. EYELETS: 2.54µm [0.00100] MIN TIN OVER COPPER FLASH. SHELL: 2.54µm [0.00100] MIN TIN OVER 1.27µm [0.00050] MIN COPPER. SCREWLOCKS: CLEAR CHROMATE. BOARDLOCKS: 3.81µm [0.00150] MIN TIN OVER 1.27µm [0.00050] MIN NICKEL.
- ▲ DATUMS AND BASIC DIMENSIONS ESTABLISHED BY CUSTOMER.
- ▲ POSITION TOLERANCE APPLIES AT CONTACT TIP.
- ▲ BOARDLOCKS WILL ACCEPT .062 MAX PRINTED CIRCUIT BOARD THICKNESS.
- 7. COMPATIBLE WITH SOLDER REFLOW APPLICATIONS TO A MAXIMUM OF 225° C FOR A MAXIMUM DURATION OF 90 SECONDS. TEMPERATURE TO BE MEASURED ON CONNECTOR SURFACE.
- ▲ SOCKET CONTACTS: GOLD PLATED FOR A LENGTH OF 1.27 [0.050] MIN FROM MATING END, 0.76µm [0.00030] MIN GOLD IN MATED AREA, 2.54µm[.000100] MIN TIN FOR A LENGTH OF 3.56[.140] MIN FROM OPPOSITE END, BOTH OVER 1.27µm[.000050] MIN NICKEL. EYELETS: 2.54µm [0.00100] MIN TIN OVER COPPER FLASH. SHELL: 2.54µm [0.00100] MIN TIN OVER 1.27µm [0.00050] MIN COPPER. SCREWLOCKS: STAINLESS STEEL WITH PASSIVATION. BOARDLOCKS: 3.81µm [0.00150] MIN TIN OVER 1.27µm [0.00050] MIN NICKEL.

▲	5788797-3
▲	5788797-2
▲	5788797-1
▲	PART NO

THIS DRAWING IS A CONTROLLED DOCUMENT		REV	00	DATE	08-11-08	BY	JDF	CHKD	BS
INCHES	25.4	MM	1016	SCALE	1:1	REV	00	DATE	08-11-08
DESCRIPTION	RCPT ASSEMBLY, SIZE 1, 318 SERIES, WITH FRONT METAL SHELL, HIGH TEMPERATURE, ANIMATE, HD-20								
REV	00	DATE	08-11-08	BY	JDF	CHKD	BS	REVISED TO	
REV	01	DATE	08-11-08	BY	JDF	CHKD	BS	REVISED TO	
REV	02	DATE	08-11-08	BY	JDF	CHKD	BS	REVISED TO	
REV	03	DATE	08-11-08	BY	JDF	CHKD	BS	REVISED TO	
REV	04	DATE	08-11-08	BY	JDF	CHKD	BS	REVISED TO	
REV	05	DATE	08-11-08	BY	JDF	CHKD	BS	REVISED TO	
REV	06	DATE	08-11-08	BY	JDF	CHKD	BS	REVISED TO	
REV	07	DATE	08-11-08	BY	JDF	CHKD	BS	REVISED TO	
REV	08	DATE	08-11-08	BY	JDF	CHKD	BS	REVISED TO	
REV	09	DATE	08-11-08	BY	JDF	CHKD	BS	REVISED TO	
REV	10	DATE	08-11-08	BY	JDF	CHKD	BS	REVISED TO	
REV	11	DATE	08-11-08	BY	JDF	CHKD	BS	REVISED TO	
REV	12	DATE	08-11-08	BY	JDF	CHKD	BS	REVISED TO	
REV	13	DATE	08-11-08	BY	JDF	CHKD	BS	REVISED TO	
REV	14	DATE	08-11-08	BY	JDF	CHKD	BS	REVISED TO	
REV	15	DATE	08-11-08	BY	JDF	CHKD	BS	REVISED TO	
REV	16	DATE	08-11-08	BY	JDF	CHKD	BS	REVISED TO	
REV	17	DATE	08-11-08	BY	JDF	CHKD	BS	REVISED TO	
REV	18	DATE	08-11-08	BY	JDF	CHKD	BS	REVISED TO	
REV	19	DATE	08-11-08	BY	JDF	CHKD	BS	REVISED TO	
REV	20	DATE	08-11-08	BY	JDF	CHKD	BS	REVISED TO	
REV	21	DATE	08-11-08	BY	JDF	CHKD	BS	REVISED TO	
REV	22	DATE	08-11-08	BY	JDF	CHKD	BS	REVISED TO	
REV	23	DATE	08-11-08	BY	JDF	CHKD	BS	REVISED TO	
REV	24	DATE	08-11-08	BY	JDF	CHKD	BS	REVISED TO	
REV	25	DATE	08-11-08	BY	JDF	CHKD	BS	REVISED TO	
REV	26	DATE	08-11-08	BY	JDF	CHKD	BS	REVISED TO	
REV	27	DATE	08-11-08	BY	JDF	CHKD	BS	REVISED TO	
REV	28	DATE	08-11-08	BY	JDF	CHKD	BS	REVISED TO	
REV	29	DATE	08-11-08	BY	JDF	CHKD	BS	REVISED TO	
REV	30	DATE	08-11-08	BY	JDF	CHKD	BS	REVISED TO	
REV	31	DATE	08-11-08	BY	JDF	CHKD	BS	REVISED TO	
REV	32	DATE	08-11-08	BY	JDF	CHKD	BS	REVISED TO	
REV	33	DATE	08-11-08	BY	JDF	CHKD	BS	REVISED TO	
REV	34	DATE	08-11-08	BY	JDF	CHKD	BS	REVISED TO	
REV	35	DATE	08-11-08	BY	JDF	CHKD	BS	REVISED TO	
REV	36	DATE	08-11-08	BY	JDF	CHKD	BS	REVISED TO	
REV	37	DATE	08-11-08	BY	JDF	CHKD	BS	REVISED TO	
REV	38	DATE	08-11-08	BY	JDF	CHKD	BS	REVISED TO	
REV	39	DATE	08-11-08	BY	JDF	CHKD	BS	REVISED TO	
REV	40	DATE	08-11-08	BY	JDF	CHKD	BS	REVISED TO	
REV	41	DATE	08-11-08	BY	JDF	CHKD	BS	REVISED TO	
REV	42	DATE	08-11-08	BY	JDF	CHKD	BS	REVISED TO	
REV	43	DATE	08-11-08	BY	JDF	CHKD	BS	REVISED TO	
REV	44	DATE	08-11-08	BY	JDF	CHKD	BS	REVISED TO	
REV	45	DATE	08-11-08	BY	JDF	CHKD	BS	REVISED TO	
REV	46	DATE	08-11-08	BY	JDF	CHKD	BS	REVISED TO	
REV	47	DATE	08-11-08	BY	JDF	CHKD	BS	REVISED TO	
REV	48	DATE	08-11-08	BY	JDF	CHKD	BS	REVISED TO	
REV	49	DATE	08-11-08	BY	JDF	CHKD	BS	REVISED TO	
REV	50	DATE	08-11-08	BY	JDF	CHKD	BS	REVISED TO	
REV	51	DATE	08-11-08	BY	JDF	CHKD	BS	REVISED TO	
REV	52	DATE	08-11-08	BY	JDF	CHKD	BS	REVISED TO	
REV	53	DATE	08-11-08	BY	JDF	CHKD	BS	REVISED TO	
REV	54	DATE	08-11-08	BY	JDF	CHKD	BS	REVISED TO	
REV	55	DATE	08-11-08	BY	JDF	CHKD	BS	REVISED TO	
REV	56	DATE	08-11-08	BY	JDF	CHKD	BS	REVISED TO	
REV	57	DATE	08-11-08	BY	JDF	CHKD	BS	REVISED TO	
REV	58	DATE	08-11-08	BY	JDF	CHKD	BS	REVISED TO	
REV	59	DATE	08-11-08	BY	JDF	CHKD	BS	REVISED TO	
REV	60	DATE	08-11-08	BY	JDF	CHKD	BS	REVISED TO	
REV	61	DATE	08-11-08	BY	JDF	CHKD	BS	REVISED TO	
REV	62	DATE	08-11-08	BY	JDF	CHKD	BS	REVISED TO	
REV	63	DATE	08-11-08	BY	JDF	CHKD	BS	REVISED TO	
REV	64	DATE	08-11-08	BY	JDF	CHKD	BS	REVISED TO	
REV	65	DATE	08-11-08	BY	JDF	CHKD	BS	REVISED TO	
REV	66	DATE	08-11-08	BY	JDF	CHKD	BS	REVISED TO	
REV	67	DATE	08-11-08	BY	JDF	CHKD	BS	REVISED TO	
REV	68	DATE	08-11-08	BY	JDF	CHKD	BS	REVISED TO	
REV	69	DATE	08-11-08	BY	JDF	CHKD	BS	REVISED TO	
REV	70	DATE	08-11-08	BY	JDF	CHKD	BS	REVISED TO	
REV	71	DATE	08-11-08	BY	JDF	CHKD	BS	REVISED TO	
REV	72	DATE	08-11-08	BY	JDF	CHKD	BS	REVISED TO	
REV	73	DATE	08-11-08	BY	JDF	CHKD	BS	REVISED TO	
REV	74	DATE	08-11-08	BY	JDF	CHKD	BS	REVISED TO	
REV	75	DATE	08-11-08	BY	JDF	CHKD	BS	REVISED TO	
REV	76	DATE	08-11-08	BY	JDF	CHKD	BS	REVISED TO	
REV	77	DATE	08-11-08	BY	JDF	CHKD	BS	REVISED TO	
REV	78	DATE	08-11-08	BY	JDF	CHKD	BS	REVISED TO	
REV	79	DATE	08-11-08	BY	JDF	CHKD	BS	REVISED TO	
REV	80	DATE	08-11-08	BY	JDF	CHKD	BS	REVISED TO	
REV	81	DATE	08-11-08	BY	JDF	CHKD	BS	REVISED TO	
REV	82	DATE	08-11-08	BY	JDF	CHKD	BS	REVISED TO	
REV	83	DATE	08-11-08	BY	JDF	CHKD	BS	REVISED TO	
REV	84	DATE	08-11-08	BY	JDF	CHKD	BS	REVISED TO	
REV	85	DATE	08-11-08	BY	JDF	CHKD	BS	REVISED TO	
REV	86	DATE	08-11-08	BY	JDF	CHKD	BS	REVISED TO	
REV	87	DATE	08-11-08	BY	JDF	CHKD	BS	REVISED TO	
REV	88	DATE	08-11-08	BY	JDF	CHKD	BS	REVISED TO	
REV	89	DATE	08-11-08	BY	JDF	CHKD	BS	REVISED TO	
REV	90	DATE	08-11-08	BY	JDF	CHKD	BS	REVISED TO	
REV	91	DATE	08-11-08	BY	JDF	CHKD	BS	REVISED TO	
REV	92	DATE	08-11-08	BY	JDF	CHKD	BS	REVISED TO	
REV	93	DATE	08-11-08	BY	JDF	CHKD	BS	REVISED TO	
REV	94	DATE	08-11-08	BY	JDF	CHKD	BS	REVISED TO	
REV	95	DATE	08-11-08	BY	JDF	CHKD	BS	REVISED TO	
REV	96	DATE	08-11-08	BY	JDF	CHKD	BS	REVISED TO	
REV	97	DATE	08-11-08	BY	JDF	CHKD	BS	REVISED TO	
REV	98	DATE	08-11-08	BY	JDF	CHKD	BS	REVISED TO	
REV	99	DATE	08-11-08	BY	JDF	CHKD	BS	REVISED TO	
REV	100	DATE	08-11-08	BY	JDF	CHKD	BS	REVISED TO	