

4

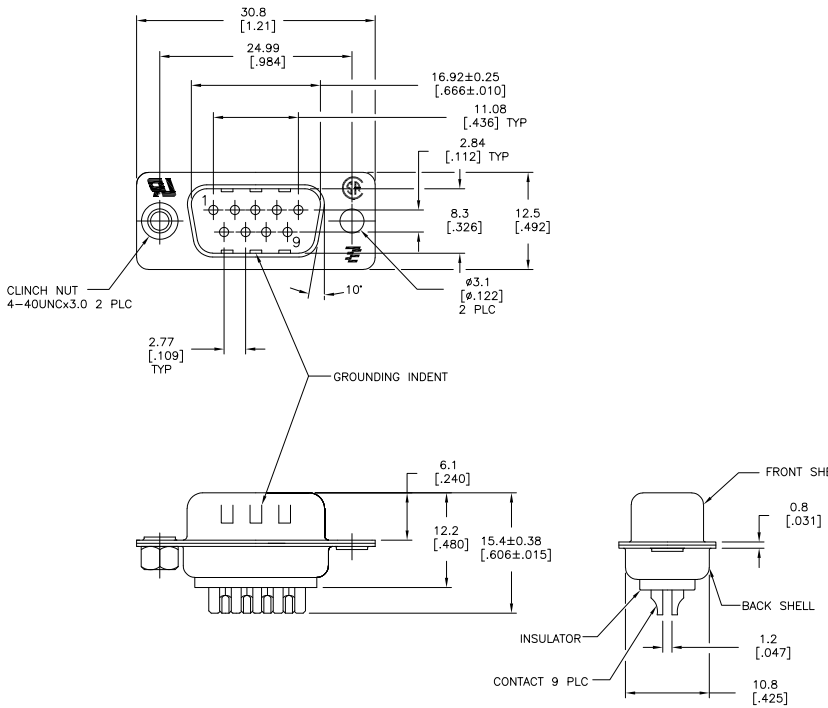
3

2

1

THIS DRAWING IS UNPUBLISHED. RELEASED FOR PUBLICATION  
 © COPYRIGHT - By - ALL RIGHTS RESERVED.

LOC	DIST	REVISIONS				
P	LTR	DESCRIPTION	DATE	DWN	APVD	
BD	00	U2 REVISED PER ECO-11-004587	11MAR11	RK	HMR	



- △ MATERIAL:  
 FRONT INSULATOR: PBT, 30 %GF, UL94V-0, BLACK COLOR  
 BACK INSULATOR: PBT, 30 %GF, UL94V-0, BLACK COLOR  
 CONTACT: BRASS  
 FRONT SHELL: STEEL  
 BACK SHELL: STEEL  
 CLINCH NUTS: BRASS
- △ FINISH:  
 CONTACT: GOLD PLATING 0.00002[.000008] MIN ON CONTACT AREA 0.00229 [0.00090] MIN TIN-LEAD PLATING ALL OVER 0.00127[.000050] MIN NICKEL
- △ CONTACT: GOLD PLATING 0.00076[.000030] MIN ON CONTACT AREA 0.00229 [0.00090] MIN TIN-LEAD PLATING ALL OVER 0.00127[.000050] MIN NICKEL
- △ SHELL: TIN 0.0241[.000095] MIN FULL SHELL
- △ SHELL: BLUE ZINC: 0.00508[.000200] - 0.00762[.000300] OVER ENTIRE SHELL
- △ CONTACT: GOLD PLATING 0.00002[.000008] MIN ON CONTACT AREA 0.00229 [0.00090] MIN TIN-COPPER PLATING ALL OVER 0.00127[.000050] MIN NICKEL
- △ CLINCH NUTS: NICKEL PLATING .00305-.00508[.000120-.000200]
- 8 SPECIFICATION  
 ELECTRICAL CHARACTERISTICS: CURRENT RATING: 3 AMPERES  
 DIELECTRIC WITHSTANDING VOLTAGE: AC 1000V r.m.s  
 INSULATION RESISTANCE: 5000 MEGOHMS MINIMUM AT DC 500V  
 CONTACT RESISTANCE: 10 MILLIOHMS MAXIMUM.
- △ ROHS 2002/95/EC/COMPLIANT
- 10 PLUG ASSEMBLY MATES WITH ANY 9 POSITION RECEPTACLE IN AMPLIMITE SERIES.
- 11 SOLDER CUP WILL ACCOMMODATE 20 AWG MAX WIRE
- △ CONTACT: GOLD PLATING 0.00076[.000030] MIN ON CONTACT AREA 0.00229[.000090] MIN TIN-COPPER ALL OVER 0.00127[.000050] MIN NICKEL PLATING

STANDARD	NO	YES	△	△	5-747904-4
STANDARD	YES	YES	△	△	5-747904-8
STANDARD	NO	YES	△	△	5-747904-5
STANDARD	NO	YES	△	△	5-747904-2
SUPERSEDED TO 5-747904-2	STANDARD	NO	YES	△	747904-9
SUPERSEDED TO 5-747904-8	STANDARD	YES	YES	△	747904-8
SUPERSEDED TO 5-747904-5	STANDARD	NO	YES	△	747904-5
SUPERSEDED TO 5-747904-4	STANDARD	NO	NO	△	747904-4
SUPERSEDED TO 5-747904-2	STANDARD	NO	YES	△	747904-2

THIS DRAWING IS A CONTROLLED DOCUMENT.

DWN	M. BINNER	OSMAR03
CHK	R. BENDORF	OSMAR03
APVD	R. BENDORF	OSMAR03
NAME	PLUG ASSY, SOLDER CUP, SIZE 1, 9 POSN, HD-20, AMPLIMITE	
PRODUCT SPEC	-	
APPLICATION SPEC	-	
WEIGHT	-	
CUSTOMER DRAWING	SCALE 2:1	SHEET 1 of 1

STE TE Connectivity

SIZE: A3 CAGE CODE: 00779 DRAWING NO: 747904 RESTRICTED TO: -

REV U2