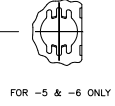
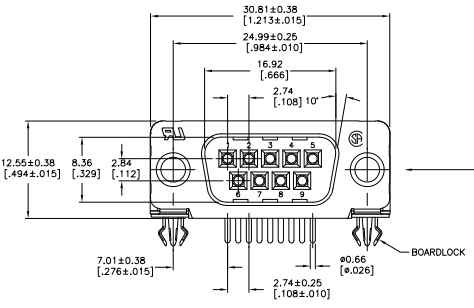
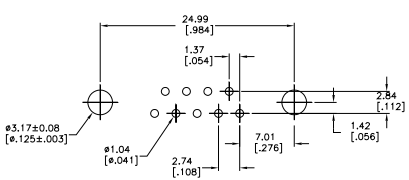
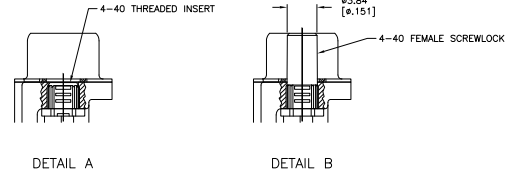
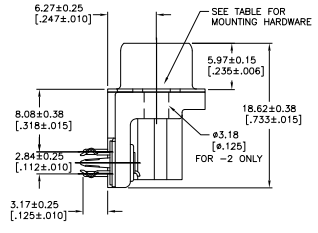
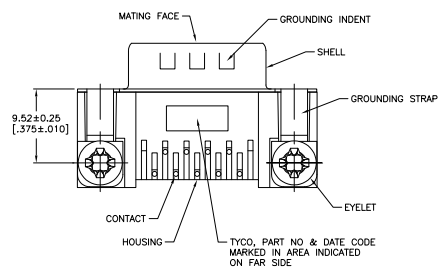


THIS DRAWING IS UNAPPROVED FOR REVISIONS  
 © 2005 TYCO ELECTRONICS CORPORATION. ALL RIGHTS RESERVED.

REVISONS		DATE	BY
00	GP		
A		REVISED PER ECO-06-028339	3/04/07 ZMR/EDB



- △ HOUSING: NYLON OR POLYESTER, FLAME RETARDANT, 94V-0 RATED, COLOR BLACK.  
SHELL: CARBON STEEL.  
CONTACTS: BRASS.  
EYELETS: BRASS.  
BOARDLOCKS: COPPER ALLOY.  
INSERTS: ZINC.  
SCREWLOCKS: ZINC.
- △ SHELL: .00254 [.000100] MIN TIN OVER .00127 [.000050] MIN COPPER.  
CONTACTS: SEE TABLE.  
EYELETS: .00508 [.000200] MIN TIN OVER COPPER FLASH.  
BOARDLOCKS: .00508 [.000200] MIN TIN OVER .00127 [.000050] MIN NICKEL.  
INSERTS: CLEAR CHROMATE.  
SCREWLOCKS: CLEAR CHROMATE.
- △ .00076 [.000030] MIN GOLD ON MATING END, .00254 [.000100] MIN TIN ON SOLDER END, ALL OVER .00127 [.000050] MIN NICKEL.  
-OR-  
GOLD FLASH OVER .00076 [.000030] MIN PALLADIUM NICKEL ON MATING END, .00254 [.000100] MIN TIN ON SOLDER END, ALL OVER .00127 [.000050] MIN NICKEL.
- △ GOLD FLASH ON MATING END, .00254 [.000100] MIN TIN ON SOLDER END, ALL OVER .00127 [.000050] MIN NICKEL.



CONTACT FINISH	MOUNTING HARDWARE	PART NUMBER
△	SEE DETAIL B	5747840-6
△	SEE DETAIL B	5747840-5
△	SEE DETAIL A	5747840-4
△	SEE DETAIL A	5747840-3
△	NONE	5747840-2

COPYRIGHT 2005  
 TYCO ELECTRONICS CORP  
 ALL RIGHTS RESERVED

THIS DRAWING IS A CONTROLLED DOCUMENT.		REV	DATE	BY	APP
REVISIONS		108-40025	114-40010	A1	00779
REVISED PER	ECO-06-028339				
CUSTOMER DRAWING					

TYCO ELECTRONICS CORPORATION  
 Harrisburg, Pa 17105

PLUG ASSEMBLY, SIZE 1, 9 POS,  
 RIGHT ANGLE, FRONT METAL SHELL,  
 8 (Ø1.118) SERIES, AMP/PLATE, HD-20