

4

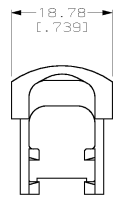
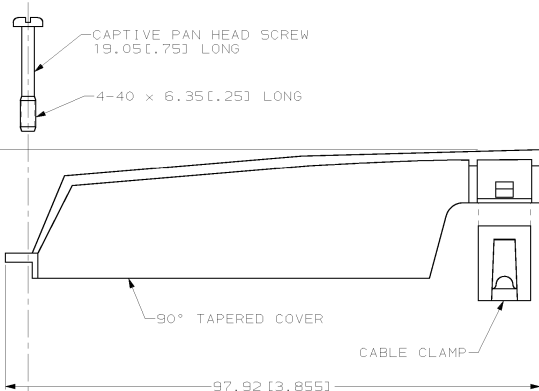
3

2

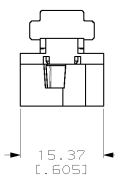
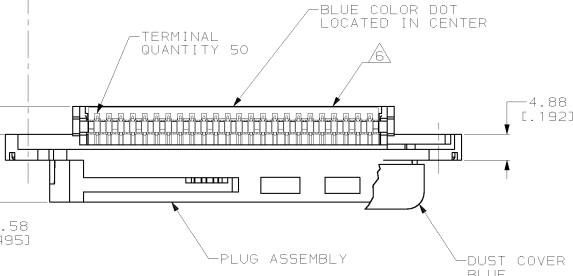
1

THIS DRAWING IS UNPUBLISHED. RELEASED FOR PUBLICATION
 (C) COPYRIGHT IS BY AMP INCORPORATED. ALL RIGHTS RESERVED.

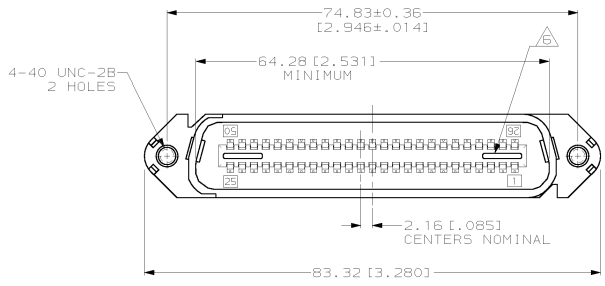
LOC	QTY	REV	DESCRIPTION	DATE	BY	APP'D
AA	20	F	CLB			
		AG	REVISED; EC 001C-0040-01	09MAR01	DL	EWB



33.35
[1.313]
ASSEMBLED



- THE CONTACT SURFACES OF THE TERMINALS ARE COATED WITH LUBRICANT.
- △ DIMENSIONS ARE MAXIMUM UNLESS OTHERWISE SPECIFIED.
 - △ MATERIAL: HOUSING AND COVER - POLYPHENYLENE OXIDE.
 - CABLE CLAMP - POLYESTER MOLDING COMPOUND.
 - TERMINALS - GOLD OVER NICKEL PLATED HIGH STRENGTH COPPER ALLOY.
 - HARDWARE - ZINC PLATED STEEL.
 - DUST COVER - POLYETHYLENE MOLDING COMPOUND.
- THIS KIT SHIPPED NOT ASSEMBLED.
- WIRE SIZE: 24 & 26 AWG SOLID & 24/7 STRAND COPPER CONDUCTORS. MAXIMUM INSULATION DIAMETER OF 1.14 [0.045] IS ACCEPTABLE FOR MOST APPLICATIONS.
- △ CORING MAY OR MAY NOT APPEAR AND IS AT THE DISCRETION OF AMP INCORPORATED.



PACKAGING	CABLE RANGE	DUST COVER	COLOR	PART NUMBER
BULK PACKED	ø7.62-8.26 [ø.300-.325]	YES	BLACK	6-229912-7
	ø8.89-10.80 [ø.350-.425]	YES	GRAY	6-229912-4
POLY BAGGED	ø10.80-12.70 [ø.425-.500]	YES	BLACK	6-229912-3
		NO	BLACK	6-229912-1
	ø8.89-10.80 [ø.350-.425]	YES	BLACK	3-229912-1
		NO	BLACK	2-229912-4
	ø8.89-10.80 [ø.350-.425]	YES	GRAY	1-229912-4
		YES	BLACK	1-229912-1
		NO	GRAY	229912-4
		NO	BLACK	229912-1

DIMENSIONS mm (INCHES)		DIMENSIONS mm (INCHES)		DIMENSIONS mm (INCHES)		DIMENSIONS mm (INCHES)		DIMENSIONS mm (INCHES)	
0 PLC +- 1 PLC +- 2 PLC +- 3 PLC +- 4 PLC +- 5 PLC +- 6 PLC +- ANGLES FINISH		0 PLC +- 1 PLC +- 2 PLC +- 3 PLC +- 4 PLC +- 5 PLC +- 6 PLC +- ANGLES FINISH		0 PLC +- 1 PLC +- 2 PLC +- 3 PLC +- 4 PLC +- 5 PLC +- 6 PLC +- ANGLES FINISH		0 PLC +- 1 PLC +- 2 PLC +- 3 PLC +- 4 PLC +- 5 PLC +- 6 PLC +- ANGLES FINISH		0 PLC +- 1 PLC +- 2 PLC +- 3 PLC +- 4 PLC +- 5 PLC +- 6 PLC +- ANGLES FINISH	
MATERIAL FINISH		MATERIAL FINISH		MATERIAL FINISH		MATERIAL FINISH		MATERIAL FINISH	
CUSTOMER DRAWING		CUSTOMER DRAWING		CUSTOMER DRAWING		CUSTOMER DRAWING		CUSTOMER DRAWING	

AMP 1471-9 REV 09/94/94
 09-146-01 17-07-27 csp3051 /home/csp3051/checked

229912