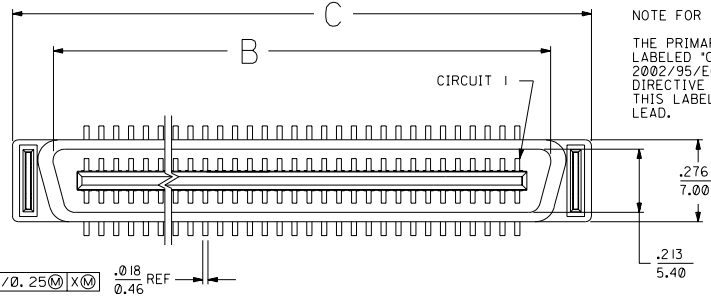
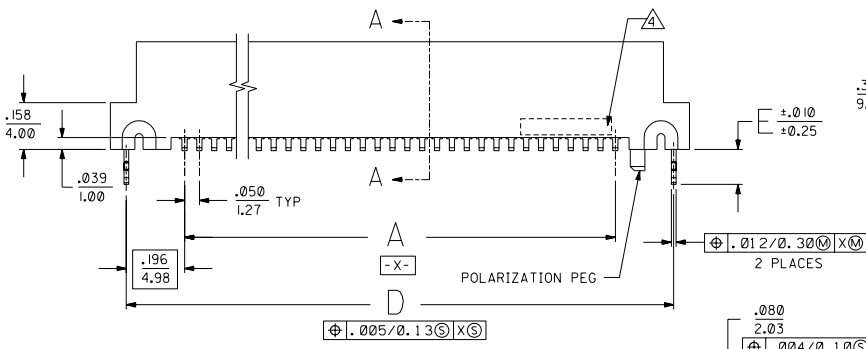


13 12 11 10 9 8 7 6 5 4 3 2 1

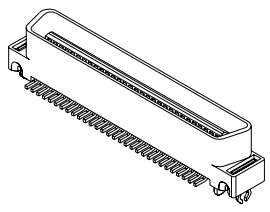


NOTE FOR LEAD FREE CONVERSION:
THE PRIMARY SHIPPING CARTON WILL BE LABELED "COMPLIANT TO ROHS DIRECTIVE 2002/95/EC AND ELV ANNEX II OF DIRECTIVE 2000/53/EC". CARTONS WITHOUT THIS LABEL MAY CONTAIN PRODUCT WITH LEAD.

- NOTES:
- MATERIALS:
HOUSING: I.R. COMPATIBLE POLYMER, GLASS FILLED, UL 94 V 0, BLACK
TERMINALS: BRASS
BOARDLOCK: PHOSPHOR BRONZE
 - PLATING:
.000030/(0.00076) MINIMUM GOLD IN CONTACT AREA AND
.000050/(0.00127) MINIMUM TIN IN TAIL AREA OVER
.000075/(0.00191) MINIMUM NICKEL UNDERPLATING OVERALL.
 - ASSEMBLY MATES WITH MOLEX P/N SDA-71660-****.
CONFORMS TO PRODUCT SPECIFICATION PS-71660.
 - FOUR DIGIT DATE CODE (WK, YR), EXAMPLE => 26 96
LOCATED IN AREA INDICATED.
 - PACKAGED PER SPECIFICATION PK-70873-055.



SECTION A-A
SCALE 4:1



60 CIRCUIT ASSEMBLY SHOWN
SCALE = 2:1

71661-5100	100	.062±.006 (1.57±0.15)	2.450 (62.23)	2.676 (67.97)	2.949 (74.90)	2.842 (72.19)	.118 (3.00)
71661-5080	80	.062±.006 (1.57±0.15)	1.950 (49.53)	2.176 (55.27)	2.449 (62.20)	2.342 (59.50)	.118 (3.00)
71661-5069	68	.116±.006 (2.95±0.15)	1.650 (41.91)	1.875 (47.65)	2.149 (54.58)	2.042 (51.88)	.172 (4.37)
71661-5068	68	.062±.006 (1.57±0.15)	1.650 (41.91)	1.875 (47.65)	2.149 (54.58)	2.042 (51.88)	.118 (3.00)
71661-5060	60	.062±.006 (1.57±0.15)	1.450 (36.83)	1.676 (42.57)	1.949 (49.50)	1.842 (46.80)	.118 (3.00)
71661-5050	50	.062±.006 (1.57±0.15)	1.200 (30.48)	1.426 (36.22)	1.699 (43.15)	1.592 (40.45)	.118 (3.00)
71661-5040	40	.062±.006 (1.57±0.15)	.950 (24.13)	1.176 (29.87)	1.449 (36.80)	1.342 (34.10)	.118 (3.00)
71661-5031	30	.116±.006 (2.95±0.15)	.700 (17.78)	.925 (23.52)	1.199 (30.45)	1.092 (27.75)	.172 (4.37)
71661-5030	30	.062±.006 (1.57±0.15)	.700 (17.78)	.925 (23.52)	1.199 (30.45)	1.092 (27.75)	.118 (3.00)

ITEM NUMBER	CIRCUIT SIZE	RECOMMENDED CIRCUIT BOARD THICKNESS	A	B	C	D	E
-------------	--------------	-------------------------------------	---	---	---	---	---

- J LEAD FREE CONV ECN UCP2004-2096 RKADAMS 04/04/23
- I CHANGE PK SPEC ECN UCP2004-0922 RWHITE 03/11/11
- H ADD -5069 & -5100 ECN UCP2003-1596 RWHITE 03/02/06
- G REV PACKAGING ECN UDT2000-1183 ACHAMMER 00/05/30
- F REVISED PER ECN UDT1999-1036 KSMITH 09/05/26
- E REVISED PER ECN U71132 RESENDEZ 97/3/21
- D2 REVISED PER ECN U70971 ACHAMMER 97/2/3
- D1 REVISED PER ECN U70444 ACHAMMER 96/10/17
- D REVISED PER ECN U60641 11-28-95 DRS
- C REVISED PER ECN U50830 2-24-95 RAN
- B REVISED PER ECN U40301 7-20-94 RAN
- A INITIAL RELEASE PER ECN U40378 3-18-94 RAN

MFG. SH. REV. LTR. REVISIONS

SALES ASSEMBLY
MOLEX EBBI 500 SMT
PLUG CONNECTOR

MOLEX INCORPORATED

SEE TABLE

SDA-71661-5***

NO DRAWING CONTAINS INFORMATION THAT IS PROPRIETARY TO MOLEX INC. AND SHOULD NOT BE USED WITHOUT WRITTEN PERMISSION.