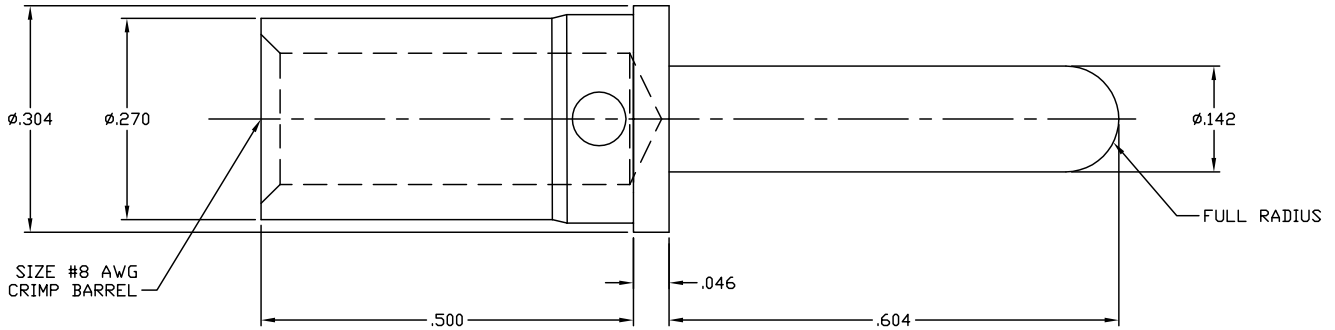


This drawing involves proprietary design rights of Tyco Electronics Corporation, and all design, manufacture, reproduction, use and sale rights regarding the same are expressly reserved. It is submitted for a specific purpose and the recipient by accepting this drawing assumes liability and control and agrees to take reasonable precautions (a) that this drawing will not be copied and reproduced in whole or in part, or its contents revealed in any manner, or in any form except to meet the purpose for which it was delivered and (b) that any special features peculiar to this design will not be incorporated in other projects without the expressed written permission of Tyco Electronics Corporation.

REVISIONS			
EC	REV	DESCRIPTION	DATE
CPR	A	NEW RELEASE	05/16/06



5. FOR TERMINATION, USE FOLLOWING EQUIPMENT:
 SHOWN FOR REFERENCE ONLY (USER SUPPLIED)
 CRIMP TOOL: M22520/23-01
 INDENTER HEAD: M22520/23-02
 LOCATOR: M22520/23-09

4. FINISH: SILVER PLATED, .000200 MIN THICK
 OVER NICKEL PLATED, .000040 MIN THICK
3. MATERIAL: COPPER ALLOY.

2. ITEMS PROVIDED TO THIS SPECIFICATION SHALL BE IDENTIFIED
 ON THE CONTAINER WITH THE FOLLOWING INFORMATION:
 PART NUMBER & DATE CODE OF MANUFACTURE.

1. PART NUMBER CHANGES AND OR DESIGN CHANGES AFFECTING ITEM
 INTERCHANGEABILITY REQUIRE PRIOR TYCO APPROVAL AND
 AUTHORIZATION BY REVISION TO THIS DRAWING.

NOTES: UNLESS OTHERWISE SPECIFIED

INCH OR INCH (MM)	DRAWN	DATE
	HA NGUYEN	05/16/06
THIRD ANGLE PROJECTION	CHECKED	
UNLESS OTHERWISE SPECIFIED DIMENSIONS ARE IN INCHES (METRIC)	APPROVED	
TOLERANCES	APPROVED	
ANGLES ± .5°	STEVE FLICKINGER	05/16/06
DECIMALS	DCA APPROVED	
.XXX ± .010 (.25)	HA NGUYEN	05/16/06
.XX ± .02 (.5)	ACAD FILE NUMBER	C1766197A.DWG

1766197-1	AS SHOWN
PART NUMBER	DESCRIPTION
Tyco Electronics Corporation Menlo Park, Ca 94025	
TITLE	
CONTACT, PIN, SIZE #8 CRIMP, PREMATE, .48 PIN EXT REMOVABLE	
SIZE	DWG NUMBER
B	C= 1766197
REV.	A
DWG SCALE 8=1 SH 1 OF 1	

4 3 2 1