

4

3

2

1

THIS DRAWING IS UNPUBLISHED. RELEASED FOR PUBLICATION
 © COPYRIGHT BY TYCO ELECTRONICS CORPORATION. ALL RIGHTS RESERVED.

LOC	DIST	REVISIONS					
FT	O	P	LR	DESCRIPTION	DATE	BY	APPD
		R		REVISED PER DG38-0065-02	8/19/02	SS	GS
		R1		REVISED PER ECO-09-022424	21SEP09	KK	AEG

[.062]		A	[.09]	[.016]	7	UNPL	12	0.12[.005]	05018	5-192044-0	
[.062]		A	[.09]	[.016]	8	7-2	12	0.10[.004]	05069	4-192044-9	OBSOLETE
[.062]		A	[.09]	[.016]	8	UNPL	12	0.10[.004]	05107	4-192044-8	
[.062]		A	[.09]	[.018]	7	4-2	12	0.10[.004]	05111	4-192044-7	
[.062]		A	[.09]	[.018]	7	UNPL	12	0.10[.004]	05110	4-192044-6	
[.047]		A	[.09]	[.016]	7	7-2	12	0.12[.005]	05006	4-192044-5	
[.062]		A	[.09]	[.016]	6	3-2	12	0.12[.005]	05005	4-192044-4	
[.040]		A	[.09]	[.015]	6	7-2	12	0.12[.005]	05004	4-192044-3	
[.032]		A	[.06]	[.020]	4	UNPL	13	0.12[.005]	05041	4-192044-2	
[.030]		A	[.06]	[.018]	4	3-2	12	0.12[.005]	05039	4-192044-1	
[.030]		A	[.06]	[.018]	4	1-2	12	0.12[.005]	05033	4-192044-0	
[.030]		A	[.06]	[.018]	4	UNPL	12	0.12[.005]	05030	3-192044-9	
NOT AVAILABLE		C		[.027]	3	3-2	12	0.12[.005]	05003	3-192044-8	
		C		[.027]	73	1-2	14	0.10[.004]	05152	3-192044-7	
		C		[.027]	73	UNPL	14	0.10[.004]	05161	3-192044-6	
		C		[.022]	21	1-2	12	0.12[.005]	05169	3-192044-5	
		C		[.022]	21	UNPL	12	0.12[.005]	05168	3-192044-4	
		C		[.022]	17	UNPL	12	0.12[.005]		3-192044-3	
		C		[.022]	17	5-6	12	0.12[.005]	05127	3-192044-2	
		C		[.022]	13	1-2	12	0.12[.005]	05136	3-192044-1	
		C		[.022]		4-2	12	0.10[.004]	05116	3-192044-0	
		C		[.022]		UNPL	12	0.10[.004]	05117	2-192044-9	
		C		[.022]		1-2	12	0.10[.004]	05181	2-192044-8	
		C		[.022]		1-2	12	0.10[.004]	05159	2-192044-7	
		C		[.022]		1-2	12	0.10[.004]	05158	2-192044-6	
		C		[.022]		3-2	12	0.15[.006]	05001	2-192044-5	
		C		[.022]		UNPL	12	0.15[.006]	05150	2-192044-4	
		C		[.018]		1-2	12	0.15[.006]	05000	2-192044-3	
		C		[.018]		UNPL	12	0.15[.006]	05058	2-192044-2	
		C		[.022]		3-2	12	0.12[.005]	05035	2-192044-1	
		C		[.022]		1-2	12	0.12[.005]	05095	2-192044-0	
		C		[.022]		1-2	12	0.12[.005]	05063	1-192044-9	
		C		[.022]		UNPL	12	0.12[.005]	05037	1-192044-8	
		C		[.018]		3-2	12	0.12[.005]	05036	1-192044-7	
		C		[.018]		1-2	12	0.12[.005]	05080	1-192044-6	
		C		[.018]		UNPL	12	0.12[.005]	05034	1-192044-5	
		C		[.022]		UNPL	14	0.12[.005]	05139	1-192044-4	
		C		[.022]		UNPL	14	0.10[.004]	05142	1-192044-3	
NOT AVAILABLE											OBSOLETE
NOT AVAILABLE											OBSOLETE
NOT AVAILABLE											OBSOLETE
NOT AVAILABLE											OBSOLETE
NOT AVAILABLE											OBSOLETE
NOT AVAILABLE											OBSOLETE
NOT AVAILABLE											OBSOLETE
NOT AVAILABLE											OBSOLETE
NOT AVAILABLE											OBSOLETE
NOT AVAILABLE											OBSOLETE
PIN #	LENGTH	STYLE	FREE DIA	(LH)	NUM LOUV	PLATING (NOTE)	MAT'L (NOTE)	MAT'L THK	REF		

1. FINISH-SILVER PLATE 200 |IN THICK MIN.
2. FINISH-NICKEL PLATE 40 |IN THICK MIN.
3. FINISH-GOLD PLATE 10 |IN THICK MIN.
4. FINISH-GOLD PLATE 20 |IN THICK MIN.
5. FINISH-GOLD PLATE 80 |IN THICK MIN.
6. FINISH-NICKEL PLATE 50 |IN THICK MIN.
7. FINISH-GOLD PLATE 50 |IN THICK MIN.
8. FINISH-NICKEL PLATE 100 |IN THICK MIN.
9. FINISH-TIN PLATE 200 |IN THICK MIN.
10. NOT USED.
11. PLATING NOTES ARE TO BE INTERPRETED AS FOLLOWS, 6-8 AS 6 OVER 8.
12. MATERIAL: CDA17200 BeCu.
13. MATERIAL-STAINLESS STEEL.
14. PRODUCT IS SOLD BY THE FOOT.
15. COIL TO 3 INCH INSIDE DIAMETER.
16. MATERIAL: CDA 17410 BeCu.
17. OBSOLETE PART NUMBER
18. MATERIAL CERTIFICATION REQUIRED.
19. OBSOLETE PARTS: OBSOLETE CIS STREAMLINING PER D.RENAUD/D.SINISI

THIS DRAWING IS A CONTROLLED DOCUMENT. DRG. NO. 12-13/91. Tyco Electronics Corporation, Harrisburg, PA 17105.

DESIGNER: J. JAYNE. DATE: 08-04-93. CHECKED: J. LURNER. DATE: 8/5/93. NAME: S. SEGRIST. PRODUCT SPEC: CONTACT BAND, FEMALE.

APPLIC. SPEC: --. SIZE: A2. CASE CODE: 00779. DRAWING NO: 192044. RESTRICTED TO: --.

MATERIAL: SEE TABLE. FINISH: SEE TABLE. CUSTOMER DRAWING. SCALE: NTS. SHEET: 1 OF 2. REV: R1.

4

3

2

1

THIS DRAWING IS UNPUBLISHED. RELEASED FOR PUBLICATION
 © COPYRIGHT BY TYCO ELECTRONICS CORPORATION. ALL RIGHTS RESERVED.

LOC	DIST	REVISIONS					
FT	0	P	LR	DESCRIPTION	DATE	BY	APPD
		R1		SEE SHEET ONE			

FREE DIA	(LH)	STYLE	LENGTH	MATING	NUM LOUV	PLATING (NOTE)	MAT'L (NOTE)	MAT'L THK	REF	PART NO.
.20	.022	A	--	.157	18	3-2	12	0.12	.005	05013 9-192044-9
.20	.022	A	--	.157	18	1-2	12	0.12	.005	05130 9-192044-8
.20	.022	A	--	.157	18	UNPL	12	0.12	.005	05131 9-192044-7
.20	.018	A	--	.152	16	7-2	12	0.15	.006	05012 9-192044-6
.20	.018	A	--	.150	16	7-2	12	0.12	.005	05011 9-192044-5
.19	.018	A	--	.143	17	3-2	12	0.12	.005	05098 9-192044-4
.19	.018	A	--	.143	17	1-2	12	0.12	.005	05188 9-192044-3
.19	.018	A	--	.143	17	UNPL	12	0.12	.005	05153 9-192044-2
.16	.015	--	--	.125	14	3-2	12	0.15	.006	05010 9-192044-1
.16	.015	--	--	.125	14	1-2	12	0.15	.006	05057 9-192044-0
.15	.015	A	--	.125	14	UNPL	12	0.15	.006	05154 8-192044-9
.15	.015	A	--	.125	13	UNPL	12	0.15	.006	05047 8-192044-8
.15	.022	A	--	.125	13	UNPL	13	0.12	.005	05026 8-192044-7
SUPERSEDED BY 193670-4										
.16	.015	A	--	.125	14	7-2	12	0.12	.005	05183 8-192044-6
.16	.015	A	--	.125	14	3-2	12	0.12	.005	05109 8-192044-5
.16	.015	A	--	.125	14	1-2	12	0.12	.005	05060 8-192044-4
.16	.015	A	--	.125	14	UNPL	12	0.12	.005	05061 8-192044-3
.16	.015	A	--	.125	14	UNPL	12	0.12	.005	05062 8-192044-2
.16	.018	A	--	.125	14	4-2	12	0.10	.004	05132 8-192044-1
.16	.018	A	--	.125	14	8	12	0.10	.004	05149 8-192044-0
.16	.018	A	--	.125	14	UNPL	12	0.10	.004	05070 7-192044-9
SUPERSEDED BY 7-192044-9										
.20	.018	A	--	.125	14	UNPL	12	0.07	.003	05068 7-192044-8
SUPERSEDED BY 8-192044-4										
.06	.022	A	--	.030	4	3-2	12	0.10	.004	05009 7-192044-5
.06	.022	A	--	.030	4	UNPL	12	0.10	.004	05008 7-192044-4
.13	.018	A	--	.094	11	UNPL	12	0.15	.006	05053 7-192044-3
.14	.016	A	--	.093	12	3-2	12	0.12	.005	05126 7-192044-2
.14	.016	A	--	.093	12	3-2	12	0.12	.005	05160 7-192044-1
.14	.016	A	--	.093	12	1-2	12	0.12	.005	05128 7-192044-0
.14	.016	A	--	.093	12	UNPL	12	0.12	.005	05125 6-192044-9
.12	.022	A	--	.080	10	8	12	0.20	.008	05173 6-192044-8
.12	.022	A	--	.080	10	7-2	12	0.20	.008	05124 6-192044-7
.12	.022	A	--	.080	10	3-2	12	0.20	.008	05007 6-192044-6
.12	.022	A	--	.080	10	UNPL	12	0.20	.008	05044 6-192044-5
.12	.021	A	--	.080	9	3-2	12	0.12	.005	05179 6-192044-4
.12	.021	A	--	.080	9	UNPL	12	0.12	.005	05180 6-192044-3
.12	.018	A	--	.080	9	7-2	12	0.10	.004	05172 6-192044-2
.12	.018	A	--	.080	9	4-2	12	0.10	.004	05112 6-192044-1
.12	.018	A	--	.080	9	1-2	12	0.10	.004	05118 6-192044-0
.12	.018	A	--	.080	9	UNPL	12	0.10	.004	05108 5-192044-9
.09	.020	A	--	.065	8	UNPL	13	0.12	.005	05031 5-192044-8
.09	.020	A	--	.062	7	UNPL	13	0.12	.005	05023 5-192044-7
.09	.015	A	--	.062	8	3-2	12	0.12	.005	05042 5-192044-6
.09	.015	A	--	.062	8	1-2	12	0.12	.005	05059 5-192044-5
.09	.015	A	--	.062	8	--	12	0.12	.005	05056 5-192044-4
.09	.015	A	--	.062	8	UNPL	12	0.12	.005	05104 5-192044-3
.09	.016	A	--	.062	8	UNPL	12	0.12	.005	05105 5-192044-2
.09	.016	A	--	.062	7	6-2	12	0.12	.005	05106 5-192044-1

OBSOLETE

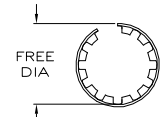
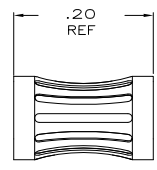
OBSOLETE

OBSOLETE

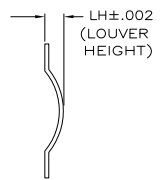
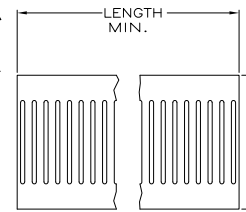
OBSOLETE

OBSOLETE

OBSOLETE



STYLE A
(FEMALE)



STYLE C
(STRIP)

THIS DRAWING IS A CONTROLLED DOCUMENT.		DR: JAYNE 12/13/91	Tyco Electronics Corporation Harrisburg, PA 17105	
DIMENSIONS: INCHES		CHK: LURNER 08-04-93	CONTACT BAND, FEMALE	
MATERIAL: SEE TABLE		APP: S. SEIGRIST 8/5/93	SIZE: A2	CAGE CODE: 00779
FINISH: SEE TABLE		APPLICATION SPEC: --	DRAWING NO: C=192044	RESTRICTED TO: --
		WEIGHT: --	SCALE: 1:1	SHEET: 2 OF 2
		CUSTOMER DRAWING	REV: R1	

AMP 1471-9 REV 31MM2000