

4

3

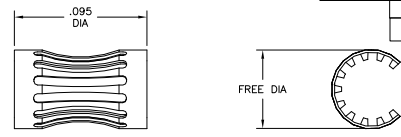
2

1

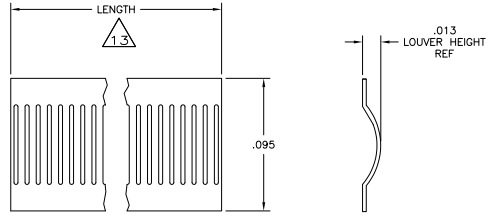
THIS DRAWING IS UNPUBLISHED. RELEASED FOR PUBLICATION
 © COPYRIGHT BY TYCO ELECTRONICS CORPORATION. ALL RIGHTS RESERVED.

LOC	DIST	REVISIONS					
FT	0	P	LR	DESCRIPTION	DATE	BY	APPD
		K1		REVISED PER ECO-07-012269	5/29/07	SS	GS
		K2		REVISED PER ECO-ECO-09-024717	05/11/09	KK	AEQ

[.012]	[.28]	A	12	6.1	[.241]	3-2	28	0.10	[.004]	06045	5-192047-0	OBSOLETE	△14	
[.012]	[.26]	A	12	5.7	[.226]	3-2	26	0.10	[.004]	06017	4-192047-9	OBSOLETE	△14	
[.012]	[.25]	A	12	5.3	[.210]	3-2	24	0.10	[.004]	06044	4-192047-8	OBSOLETE	△14	
[.012]	[.23]	A	12	4.8	[.188]	3-2	22	0.10	[.004]	06052	4-192047-7	OBSOLETE	△14	
[.012]	[.22]	A	12	4.7	[.187]	UNPL	21	0.10	[.004]	06021	4-192047-6	OBSOLETE	△14	
[.012]	[.22]	A	12	4.5	[.179]	3-2	21	0.10	[.004]	06043	4-192047-5	OBSOLETE	△14	
[.012]	[.20]	A	12	4.3	[.168]	3-2	19	0.10	[.004]	06016	4-192047-4	OBSOLETE	△14	
[.012]	[.19]	A	12	4.1	[.160]	6-2	18	0.10	[.004]	06065	4-192047-3	OBSOLETE	△14	
[.012]	[.19]	A	12	4.1	[.160]	UNPL	18	0.10	[.004]	06066	4-192047-2	OBSOLETE	△14	
[.012]	[.17]	A	12	3.7	[.146]	UNPL	16	0.12	[.005]	06011	4-192047-1	OBSOLETE	△14	
[.012]	[.17]	A	12	3.7	[.146]	4-2	16	0.10	[.004]	06035	4-192047-0	OBSOLETE	△14	
[.012]	[.17]	A	12	3.7	[.146]	UNPL	16	0.10	[.004]	06010	3-192047-9	OBSOLETE	△14	
[.012]	[.17]	A	12	3.7	[.146]	UNPL	16	0.08	[.003]	06009	3-192047-8	OBSOLETE	△14	
[.012]	[.15]	A	12	3.2	[.125]	6-2	14	0.10	[.004]	06064	3-192047-7	OBSOLETE	△14	
[.012]	[.15]	A	12	3.2	[.125]	5	14	0.10	[.004]	06056	3-192047-6	OBSOLETE	△14	
[.012]	[.15]	A	12	3.2	[.125]	UNPL	14	0.10	[.004]	06055	3-192047-5	OBSOLETE	△14	
[.012]	[.15]	A	12	2.9	[.113]	3-2	14	0.10	[.004]	06042	3-192047-4	OBSOLETE	△14	
SUPERSEDED BY 3-192047-5											06023	3-192047-3	SUPERSEDED	△14
[.012]	[.15]	A	12	2.9	[.113]	UNPL	14	0.08	[.003]	06022	3-192047-2	OBSOLETE	△14	
[.012]	[.11]	A	12	2.0	[.080]	3-2	10	0.15	[.006]	06076	3-192047-1	OBSOLETE	△14	
[.012]	[.11]	A	12	2.0	[.080]	UNPL	10	0.15	[.006]	06075	3-192047-0	OBSOLETE	△14	
[.012]	[.11]	A	12	2.0	[.080]	4-2	10	0.12	[.005]	06074	2-192047-9	OBSOLETE	△14	
[.012]	[.11]	A	12	2.0	[.080]	UNPL	10	0.12	[.005]	06073	2-192047-8	OBSOLETE	△14	
[.012]	[.11]	A	12	2.0	[.080]	3-2	10	0.10	[.004]	06070	2-192047-7	OBSOLETE	△14	
[.012]	[.11]	A	12	2.0	[.080]	UNPL	10	0.10	[.004]	06041	2-192047-6	OBSOLETE	△14	
[.012]	[.11]	A	12	2.0	[.080]	C	9	0.10	[.004]	06037	2-192047-5	OBSOLETE	△14	
[.012]	[.11]	A	12	2.0	[.080]	UNPL	9	0.10	[.004]	06047	2-192047-4	OBSOLETE	△14	
[.012]	[.09]	A	12	1.6	[.062]	3-2	8	0.10	[.004]	06069	2-192047-3	OBSOLETE	△14	
[.012]	[.09]	A	12	1.6	[.062]	UNPL	8	0.10	[.004]	06008	2-192047-2	OBSOLETE	△14	
SUPERSEDED BY 193810-2											06079	2-192047-1	SUPERSEDED	△14
SUPERSEDED BY 193810-1											06080	2-192047-0	SUPERSEDED	△14
[.014]	[.09]	A	12	1.6	[.062]	6-2	7	0.10	[.004]	06063	1-192047-9	OBSOLETE	△14	
[.014]	[.09]	A	12	1.6	[.062]	3-2	7	0.10	[.004]	06068	1-192047-8	OBSOLETE	△14	
[.014]	[.09]	A	12	1.6	[.062]	UNPL	7	0.10	[.004]	06067	1-192047-7	OBSOLETE	△14	
SUPERSEDED BY 1-192047-6											06062	1-192047-6	SUPERSEDED	△14
[.012]	[.09]	A	12	1.6	[.062]	UNPL	8	0.08	[.003]	06007	1-192047-5	OBSOLETE	△14	
[.012]	[.06]	A	12	1.0	[.040]	3-2	6	0.10	[.004]	06014	1-192047-4	OBSOLETE	△14	
[.012]	[.06]	A	12	1.0	[.040]	UNPL	6	0.10	[.004]	06026	1-192047-3	OBSOLETE	△14	
[.012]	[.06]	A	12	0.6	[.025]	3-2	4	0.10	[.004]	06013	1-192047-2	OBSOLETE	△14	
[.012]	[.06]	A	12	0.6	[.025]	UNPL	4	0.10	[.004]	06025	1-192047-1	OBSOLETE	△14	
[.013]	[.06]	A	12	0.6	[.025]	3-2	4	0.08	[.003]	06027	1-192047-0	OBSOLETE	△14	
[.013]	[.06]	A	12	0.6	[.025]	UNPL	4	0.08	[.003]	06024	192047-9	OBSOLETE	△14	
[.023]	--	C	12	--	--	1-2	73	0.10	[.004]	06061	192047-8	OBSOLETE	△14	
[.025]	--	C	12	--	--	1-2	23	0.10	[.004]	06078	192047-7	OBSOLETE	△14	
[.014]	--	C	12	--	--	UNPL	--	0.10	[.004]	06048	192047-6	OBSOLETE	△14	
[.014]	--	C	12	--	--	UNPL	--	0.10	[.004]	06012	192047-5	OBSOLETE	△14	
										--	192047-4	OBSOLETE	△14	
										--	192047-3	OBSOLETE	△14	
										--	192047-2	SUPERSEDED	△14	
										--	192047-1	OBSOLETE	△14	



STYLE A
(FEMALE)



STYLE C
(STRIP)

1. FINISH-SILVER PLATE 200 μIN THICK MIN.
2. FINISH-NICKEL PLATE 40 μIN THICK MIN.
3. FINISH-GOLD PLATE 10 μIN THICK MIN.
4. FINISH-GOLD PLATE 50 μIN THICK MIN.
5. FINISH-TIN PLATE 300 μIN THICK MIN.
6. FINISH-GOLD PLATE 20 μIN THICK MIN.
7. FINISH-NICKEL PLATE 50 μIN THICK MIN.
8. NOT USED.
9. NOT USED.
10. NOT USED.
11. PLATING NOTES ARE TO BE INTERPRETED AS FOLLOWS FOLLOWS, 3-2 AS 3 OVER 2.
12. MATERIAL-CDA172, BeCu.

- △13 PRODUCT IS SOLD BY THE FOOT.
- △14 PRELIMINARY PART NUMBER.

LH	(FREE DIA)	STYLE	MAT'L (NOTE)	MATING PIN # REF	PLATING (NOTE)	NUM LOUV	MAT'L THK	REF	PART NUMBER

THIS DRAWING IS A CONTROLLED DOCUMENT. DR: JAYNE 06-11-92
 CR: JAYNE 06-11-92
 TYP: JAYNE 06-11-92
 NAME: Tyco Electronics Tyco Electronics Corporation Harrisburg, PA 17105-3608

DIMENSIONS: INCHES
 0 PL ± .010
 1 PL ± .005
 2 PL ± .005
 3 PL ± .005
 4 PL ± .005
 ANGLES ± .010

MATERIAL: SEE TABLE
 FINISH: SEE TABLE

PRODUCT SPEC: CONTACT BAND, FEMALE
 APPLICATION SPEC: --
 WEIGHT: --

SIZE: A2
 CASE CODE: 00779
 DRAWING NO: C=192047

RESTRICTED TO: --
 CUSTOMER DRAWING
 SCALE: 1:1 SHEET: 1 of 2 REV: K2

4

3

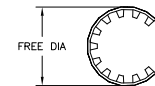
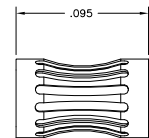
2

1

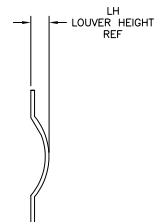
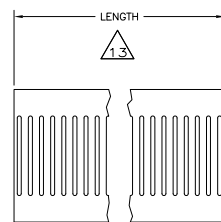
THIS DRAWING IS UNPUBLISHED. RELEASED FOR PUBLICATION
 © COPYRIGHT BY TYCO ELECTRONICS CORPORATION. ALL RIGHTS RESERVED.

LOC	DIST	REVISIONS					
FT	0	P	LTR	DESCRIPTION	DATE	BY	APPD
		--		SEE SHEET 1			

LH	(FREE DIA)	STYLE	MAT'L (NOTE)	MATING PIN # REF	PLATING	NUM LOUV	MATL THK	REF	PART NUMBER	
[.012]	[.13]	A	12	2.54 [.100]	17-2	12	0.10 [.004]	--	8-192047-8	
[.014]	[.38]	A	12	7.9 [.313]	3-2	35	0.10 [.004]	--	8-192047-7	
[.012]	[.06]	A	12	1.0 [.040]	5-2	6	0.10 [.004]	--	8-192047-6	
[.023]	--	C	12	--	2	35	0.10 [.004]	--	8-192047-5	
[.023]	--	C	12	--	2	--	0.10 [.004]	--	8-192047-4	
[.012]	[.33]	A	12	6.5 [.256]	6-2	29	0.10 [.004]	--	8-192047-3	
[.012]	[.57]	A	12	11.9 [.471]	6-2	55	0.10 [.004]	--	8-192047-2	
[.014]	[.09]	A	12	1.57 [.062]	UNPL	6	0.10 [.004]	--	8-192047-1	
[.014]	[.09]	A	12	1.57 [.062]	3-2	6	0.10 [.004]	--	8-192047-0	
[.025]	--	C	12	--	UNPL	23	0.10 [.004]	--	7-192047-9	
[.012]	[.43]	A	12	10.1 [.400]	UNPL	45	0.10 [.004]	--	7-192047-8	
[.012]	[.40]	A	12	8.7 [.342]	UNPL	39	0.10 [.004]	--	7-192047-7	
[.012]	[.36]	A	12	7.2 [.284]	UNPL	32	0.10 [.004]	--	7-192047-6	
[.012]	[.29]	A	12	6.5 [.256]	UNPL	29	0.10 [.004]	--	7-192047-5	
[.012]	[.28]	A	12	6.1 [.241]	UNPL	28	0.10 [.004]	--	7-192047-4	
[.012]	[.26]	A	12	5.7 [.226]	UNPL	26	0.10 [.004]	--	7-192047-3	
[.012]	[.25]	A	12	5.3 [.210]	UNPL	24	0.10 [.004]	--	7-192047-2	
[.012]	[.23]	A	12	4.8 [.188]	UNPL	22	0.10 [.004]	--	7-192047-1	
[.012]	[.20]	A	12	4.3 [.168]	UNPL	19	0.10 [.004]	--	7-192047-0	
[.023]	--	C	12	--	UNPL	--	0.10 [.004]	--	6-192047-9	
[.012]	[.06]	A	12	1.0 [.040]	4-7	6	0.10 [.004]	--	6-192047-8	
									6-192047-7	
									6-192047-6	
									6-192047-5	
									6-192047-4	
[.012]	[.43]	A	12	1.0 [.040]	4-2	45	0.10 [.004]	06085	6-192047-3	
									06800	6-192047-2
									06801	6-192047-1
									06078	6-192047-0
									06054	5-192047-9
									06053	5-192047-8
[.012]	[.52]	A	12	12.7 [.500]	UNPL	55	0.10 [.004]	06057	5-192047-7	
[.012]	[.43]	A	12	10.1 [.400]	3-2	45	0.10 [.004]	06020	5-192047-6	
[.012]	[.40]	A	12	8.7 [.342]	3-2	39	0.10 [.004]	06019	5-192047-5	
[.012]	[.36]	A	12	7.2 [.284]	3-2	32	0.10 [.004]	06018	5-192047-4	
[.012]	[.35]	A	12	6.9 [.272]	6-2	31	0.10 [.004]	06046	5-192047-3	
[.012]	[.35]	A	12	6.9 [.272]	UNPL	31	0.10 [.004]	06077	5-192047-2	
[.012]	[.33]	A	12	6.5 [.256]	4-2	29	0.10 [.004]	06040	5-192047-1	



STYLE A
(FEMALE)



STYLE C
(STRIP)

15. CUT TO LENGTH OF 25mm.

16. OBSOLETE PART NUMBER.

17. FINISH: GOLD PLATE 30 MIN THICK MIN.

18. OBSOLETE PARTS: OBSOLETE CIS STREAMLINING PER D.RENAUD/D.SINISI

THIS DRAWING IS A CONTROLLED DOCUMENT.		DRG SIA JAYNE 06-11-92	Tyco Electronics Corporation Harrisburg, PA 17105-3608	
DIMENSIONS: INCHES		CHK SIA JAYNE 06-11-92	NAME CONTACT BAND,FEMALE	
OTHER DIMENSIONS: OTHER UNITS: MILLIMETERS		APP --	PRODUCT SPEC --	
MATERIAL SEE TABLE		APP --	APPLICATION SPEC --	
FINISH SEE TABLE		WEIGHT --	SIZE A2	
		CAGE CODE 00779		DRAWING NO C=192047
		CUSTOMER DRAWING		RESTRICTED TO --
		SCALE 1:1		SHEET 2 of 2
				REV K2

AMP 1471-9 REV 31MM2000

192047

A