

4

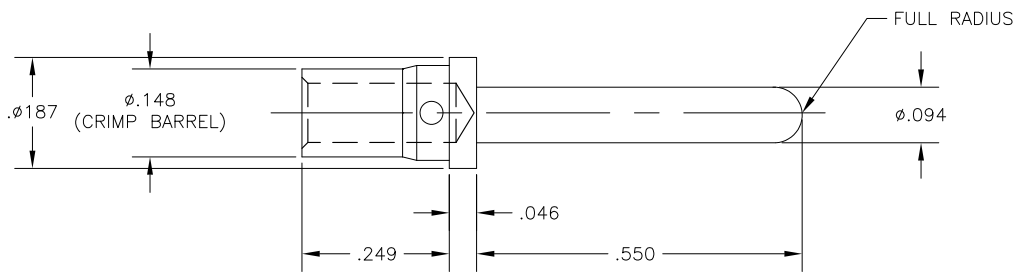
3

2

1

THIS DRAWING IS UNPUBLISHED. RELEASED FOR PUBLICATION  
 © COPYRIGHT - BY TYCO ELECTRONICS CORPORATION. ALL RIGHTS RESERVED.

LOC	DIST	REVISIONS					
GP	00	P	LTR	DESCRIPTION	DATE	DWN	APVD
		B		REV PER ECO-08-014775	25JUN08	RG	DO



5. REFERENCE ELCON SERIES 701-12-02107
4. FINISH: SILVER PLATED .000200 MIN THK.  
OVER NICKEL .000050 MIN THK.
3. MATERIAL: COPPER ALLOY
2. ITEMS PROVIDED TO THIS SPECIFICATION SHALL BE IDENTIFIED  
ON THE CONTAINER WITH THE FOLLOWING INFORMATION:  
PART NUMBER & DATE CODE OF MANUFACTURE.
1. PART NUMBER CHANGES AND/OR DESIGN CHANGES AFFECTING  
ITEM INTERCHANGEABILITY REQUIRE PRIOR TYCO ELECTRONICS APPROVAL  
AND AUTHORIZATION BY REVISION TO THIS DRAWING.

1766193-1  
PART NUMBER

THIS DRAWING IS A CONTROLLED DOCUMENT.		DWN	31MAR06	 Tyco Electronics Corporation Harrisburg, PA 17105-3608											
		CHK	31MAR06												
DIMENSIONS:		S.FLICKINGER		NAME PIN CONTACT, SIZE #12 CRIMP, STANDARD, .43 PIN EXT.											
INCHES		S.FLICKINGER													
TOLERANCES UNLESS OTHERWISE SPECIFIED:		S.FLICKINGER		PRODUCT SPEC - APPLICATION SPEC - WEIGHT -											
<table border="1"> <tr><td>0 PLC</td><td>± -</td></tr> <tr><td>1 PLC</td><td>± -</td></tr> <tr><td>2 PLC</td><td>± .02</td></tr> <tr><td>3 PLC</td><td>± .010</td></tr> <tr><td>4 PLC</td><td>± -</td></tr> <tr><td>ANGLES</td><td>± .5</td></tr> </table>		0 PLC	± -		1 PLC	± -	2 PLC	± .02	3 PLC	± .010	4 PLC	± -	ANGLES	± .5	APVD
0 PLC	± -														
1 PLC	± -														
2 PLC	± .02														
3 PLC	± .010														
4 PLC	± -														
ANGLES	± .5														
MATERIAL		SIZE	CAGE CODE	DRAWING NO	RESTRICTED TO										
SEE NOTE 3		A3	00779	1766193	-										
		CUSTOMER DRAWING		SCALE	SHEET										
				6:1	1 OF 1										
				REV	B										