

4

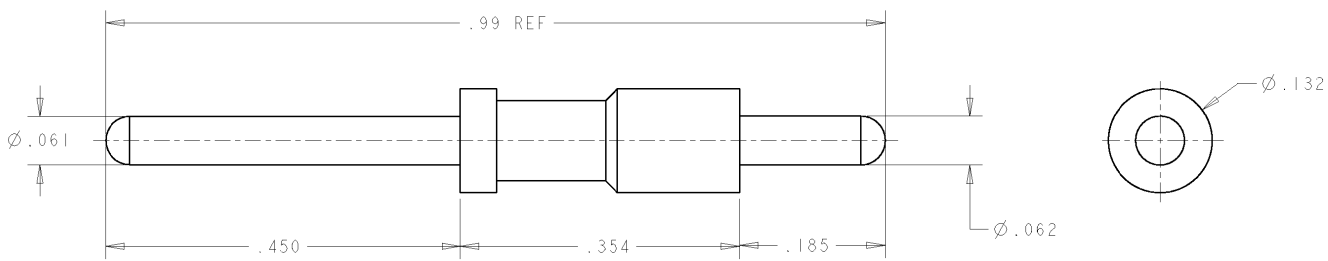
3

2

1

THIS DRAWING IS UNPUBLISHED. RELEASED FOR PUBLICATION 20
 © COPYRIGHT 20 BY TYCO ELECTRONICS CORPORATION. ALL RIGHTS RESERVED.

LOC	DIST	REVISIONS				
P	LTR	DESCRIPTION	DATE	DWN	APVD	
GP	00	A	NEW RELEASE	27APR2007	RG	DO



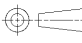
- PART NUMBER CHANGES AND OR DESIGN CHANGES AFFECTING THE INTERCHANGEABILITY REQUIRE PRIOR TYCO APPROVAL AND AUTHORIZATION BY REVISION TO THIS DRAWING.
- MATERIAL:
PIN CONTACT: BRASS ALLOY
- FINISH:
PIN CONTACT: SILVER PLATE .000200 MIN. THK. OVER
NICKEL PLATE .000040 MIN THK.
- ITEMS PROVIDED TO THIS SPECIFICATION TO BE PERMANENTLY IDENTIFIED PER THE FOLLOWING IDENTIFIER:

YEAR WEEK

TYCO PART NUMBER
XXXXXXX-X

DATE CODE (e.g. 0216)
XXXX

AS SHOWN	1766222-1
DESCRIPTION	PART NO.

<small>THIS DRAWING IS A CONTROLLED DOCUMENT FOR THE ELECTRONICS CORPORATION IT IS SUBJECT TO CHANGE AND THE CONTROLLING ENGINEERING ORGANIZATION SHOULD BE CONTACTED FOR THE LATEST REVISION.</small>		DWN 27APR2007 R. GRZYBOWSKI CHK 27APR2007 D. ORRIS APVD 27APR2007 S. FLICKINGER	Tyco Electronics Harrisburg, PA 17105-3608
DIMENSIONS: INCHES 	TOLERANCES UNLESS OTHERWISE SPECIFIED: 0 PLC ± 1 PLC ± 2 PLC ±.02 3 PLC ±.010 4 PLC ± ANGLES ± FINISH -	NAME CONTACT, PIN, SIZE No. 16 PCB TAIL .33 FRONT EXT, .16 REAR EXT.	RESTRICTED TO
MATERIAL -	FINISH -	SIZE A3 CAGE CODE 00779 DRAWING NO. C-1766222	WEIGHT - CUSTOMER DRAWING
		SCALE 8:1	SHEET 1 OF 1 REV A

AMP 1470-19 REV 31MAR2000

Proj/ENGINEER DRAWING