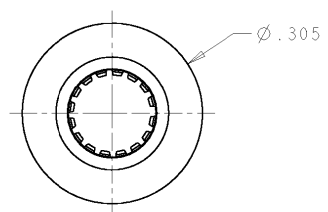
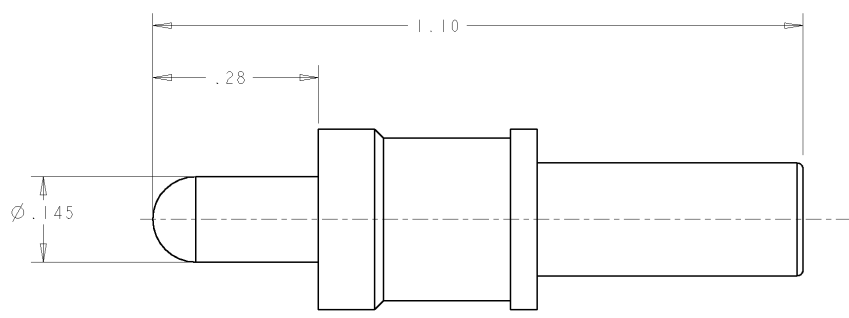


THIS DRAWING IS UNPUBLISHED. RELEASED FOR PUBLICATION  
 © COPYRIGHT 20 BY TYCO ELECTRONICS CORPORATION. ALL RIGHTS RESERVED.

LOC	DIST	REVISIONS				
P	LTR	DESCRIPTION	DATE	DWN	APVD	
GP	00	A	RELEASED	11MAY2007	RG DO	



- PART NUMBER CHANGES AND OR DESIGN CHANGES AFFECTING THE INTERCHANGEABILITY REQUIRE PRIOR TYCO APPROVAL AND AUTHORIZATION BY REVISION TO THIS DRAWING.
- MATERIAL:  
 SOCKET BODY: BRASS ALLOY  
 CROWN BAND: BERYLLIUM COPPER ALLOY
- FINISH:  
 SOCKET BODY: SILVER PLATE .000200 MIN THK. OVER NICKEL  
 .000040 MIN. THK.  
 CROWN BAND: GOLD PLATE .000030 MIN THK. OVER NICKEL .000050 MIN THK.
- ITEMS PROVIDED TO THIS SPECIFICATION TO BE PERMANENTLY IDENTIFIED ON THE CONTAINER WITH THE FOLLOWING IDENTIFIER:

TYCO PART NO. \_\_\_\_\_ DATE CODE (e.g. 0216) \_\_\_\_\_  
 XXXXXXXX-X XXXX

YEAR 1 WEEK 1

AS SHOWN	6648400-1
DESCRIPTION	PART NUMBER

<small>THIS DRAWING IS A CONTROLLED DOCUMENT FOR TYCO ELECTRONICS CORPORATION. IT IS SUBJECT TO CHANGE AND THE CONTROLLING ENGINEERING ORGANIZATION SHOULD BE CONTACTED FOR THE LATEST REVISION.</small>		DWN R GRZYBOWSKI 11MAY2007 CHK D ORRIS 11MAY2007 APVD S FLICKINGER 11MAY2007	<b>Tyco Electronics</b> Tyco Electronics Harrisburg, PA 17105-3608
DIMENSIONS: INCHES 	TOLERANCES UNLESS OTHERWISE SPECIFIED: 0 PLC ± 1 PLC ± 2 PLC ±.02 3 PLC ±.01 4 PLC ± ANGLES ± FINISH -	NAME PRODUCT SPEC APPLICATION SPEC WEIGHT	SOCKET CONTACT, SIZE No 8 STANDARD, PC TAIL DRAWER/DOMINO SIZE A3 CAGE CODE 00779 DRAWING NO C-6648400 RESTRICTED TO -
MATERIAL - FINISH -		CUSTOMER DRAWING	SCALE 6:1 SHEET 1 OF 1 REV A

**ELCON CONTACTS**

AMP 1470-19 REV 31MAR2000  
 Proj/ENGINEER DRAWING