

4

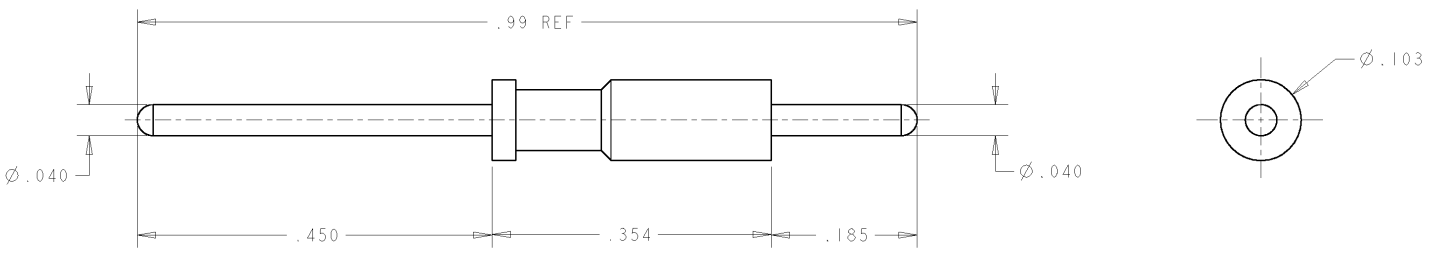
3

2

1

THIS DRAWING IS UNPUBLISHED. RELEASED FOR PUBLICATION 20
 © COPYRIGHT 20 BY TYCO ELECTRONICS CORPORATION. ALL RIGHTS RESERVED.

LOC	DIST	REVISIONS				
P	LTR	DESCRIPTION	DATE	DWN	APVD	
	GP 00	A NEW RELEASE	27APR2007	RG	DO	



1. PART NUMBER CHANGES AND OR DESIGN CHANGES AFFECTING THE INTERCHANGEABILITY REQUIRE PRIOR TYCO APPROVAL AND AUTHORIZATION BY REVISION TO THIS DRAWING.

2. MATERIAL:
PIN CONTACT: BRASS ALLOY

3. FINISH:
PIN CONTACT: GOLD PLATE $.000030$ MIN. THK. OVER
NICKEL PLATE $.000040$ MIN THK.


4. ITEMS PROVIDED TO THIS SPECIFICATION TO BE PERMANENTLY IDENTIFIED PER THE FOLLOWING IDENTIFIER:

YEAR 11 WEEK 11

TYCO PART NUMBER
XXXXXXX-X

DATE CODE (e.g. 0216)
XXXX

AS SHOWN	1650283-1
DESCRIPTION	PART NO.

<small>THIS DRAWING IS A CONTROLLED DOCUMENT FOR TYCO ELECTRONICS CORPORATION IT IS SUBJECT TO CHANGE AND THE CONTROLLING ENGINEERING ORGANIZATION SHOULD BE CONTACTED FOR THE LATEST REVISION.</small>		DWN 27APR2007 R GRZYBOWSKI CHK 27APR2007 D ORRIS APVD 27APR2007 S FLICKINGER	Tyco Electronics Harrisburg, PA 17105-3608
DIMENSIONS: INCHES 	TOLERANCES UNLESS OTHERWISE SPECIFIED: 0 PLC ± 1 PLC ± 2 PLC ±.02 3 PLC ±.010 4 PLC ± ANGLES ±.5 FINISH -	NAME CONTACT, PIN, SIZE No. 20, PCB TAIL .32 FRONT EXT., .18 REAR EXT.	RESTRICTED TO
MATERIAL -	FINISH -	SIZE CAGE CODE DRAWING NO A300779 C-1650283	
CUSTOMER DRAWING		SCALE 8:1	SHEET 1 OF 1 REV A

AMP 1470-19 REV 31MAR2000

Proj/ENGINEER DRAWING