

4

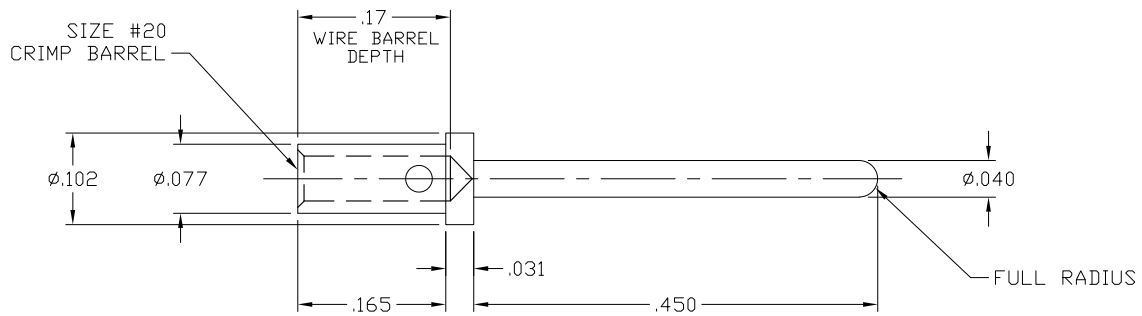
3

2

1

THIS DRAWING IS UNPUBLISHED. RELEASED FOR PUBLICATION  
 © COPYRIGHT - By - ALL RIGHTS RESERVED.

LOC	DIST	REVISIONS			
P	LTR	DESCRIPTION	DATE	DWN	APVD
00	00	B1	REVISED PER ECO-11-005150	21MAR11	RK HMR



6. FOR TERMINATION, USE FOLLOWING EQUIPMENT:  
 SHOWN FOR REFERENCE ONLY (USER SUPPLIED)  
 CRIMP TOOL: M22520/1-01  
 TURRET HEAD/LOCATOR: M22520/1-02

5. FINISH: GOLD PLATED, .000030 MIN THICK  
 OVER NICKEL PLATED, .000050 MIN THICK
4. FINISH: GOLD PLATED, .000010 MIN THICK  
 OVER NICKEL PLATED, .000050 MIN THICK

3. MATERIAL: COPPER ALLOY.

2. ITEMS PROVIDED TO THIS SPECIFICATION SHALL BE IDENTIFIED ON THE CONTAINER WITH THE FOLLOWING INFORMATION: PART NUMBER & DATE CODE OF MANUFACTURE.

1. PART NUMBER CHANGES AND OR DESIGN CHANGES AFFECTING ITEM INTERCHANGEABILITY REQUIRE PRIOR TE CONNECTIVITY APPROVAL AND AUTHORIZATION BY REVISION TO THIS DRAWING.

NOTES: UNLESS OTHERWISE SPECIFIED

1650155-2	⚠
1650155-1	⚠
PART NUMBER	DESCRIPTION

THIS DRAWING IS A CONTROLLED DOCUMENT.		DWN J. PATTERSON 11JULY07	TE Connectivity	
DIMENSIONS: INCHES		CHK D. ORRIS 11JULY07	NAME D. ORRIS D. ORRIS	
TOLERANCES UNLESS OTHERWISE SPECIFIED:		APVD D. ORRIS	PRODUCT SPEC	
0 PLC ± -		APPLICATION SPEC		
1 PLC ± -		WEIGHT		
2 PLC ± .02 [-.3]		SIZE A3		
3 PLC ± .010 [-.25]		CAGE CODE 00779		
4 PLC ± -		DRAWING NO C-1650155		
ANGLES ± .5°		RESTRICTED TO		
MATERIAL SEE NOTE 1, SHEET 1		FINISH		
		CUSTOMER DRAWING		
		SCALE 8=1 SHEET 1 OF 1 REV B1		