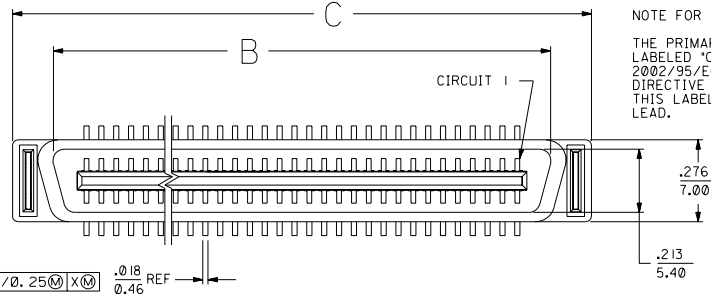
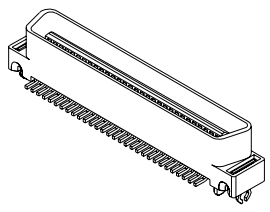
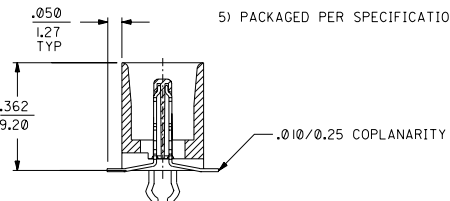
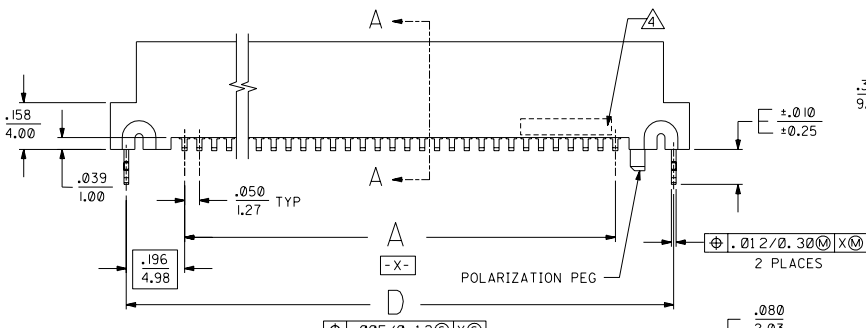


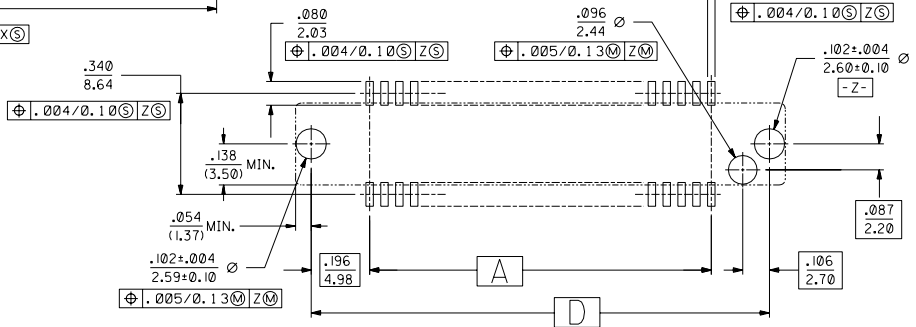
13 12 11 10 9 8 7 6 5 4 3 2 1



- NOTES:
- MATERIALS:  
HOUSING: I.R. COMPATIBLE POLYMER, GLASS FILLED, UL 94 V 0, BLACK  
TERMINALS: BRASS  
BOARDLOCK: PHOSPHOR BRONZE
  - PLATING:  
.000030/(0.00076) MINIMUM GOLD IN CONTACT AREA AND  
.000050/(0.00127) MINIMUM TIN IN TAIL AREA OVER  
.000075/(0.00191) MINIMUM NICKEL UNDERPLATING OVERALL.
  - ASSEMBLY MATES WITH MOLEX P/N SDA-71660-\*\*\*\*.  
CONFORMS TO PRODUCT SPECIFICATION PS-71660.
  - FOUR DIGIT DATE CODE (WK, YR), EXAMPLE => 26 96  
LOCATED IN AREA INDICATED.
  - PACKAGED PER SPECIFICATION PK-70873-055.



60 CIRCUIT ASSEMBLY SHOWN  
SCALE = 2:1



J	LEAD FREE CONV ECN UCP2004-2096 RKADAMS 04/04/23
I	CHANGE PK SPEC ECN UCP2004-0922 RWWHITE 03/11/11
H	ADD -5069 & -5100 ECN UCP2003-1596 RWWHITE 03/02/06
G	REV PACKAGING ECN UDT2000-1183 ACHAMMER 00/05/30
F	REVISED PER ECN UDT1999-1036 KSMITH 09/05/26
E	REVISED PER ECN U71132 RESENDEZ 97/3/21
D2	REVISED PER ECN U70971 ACHAMMER 97/2/3
D1	REVISED PER ECN U70444 ACHAMMER 96/10/17
D	REVISED PER ECN U60641 11-28-95 DRS
C	REVISED PER ECN U50830 2-24-95 RAN
B	REVISED PER ECN U40901 7-20-94 RAN
A	INITIAL RELEASE PER ECN U40378 3-18-94 RAN

71661-5100	100	.062±.006 (1.57±0.15)	2,450 (62.23)	2,676 (67.97)	2,949 (74.90)	2,842 (72.19)	.118 (3.00)
71661-5080	80	.062±.006 (1.57±0.15)	1,950 (49.53)	2,176 (55.27)	2,449 (62.20)	2,342 (59.50)	.118 (3.00)
71661-5069	68	.116±.006 (2.95±0.15)	1,650 (41.91)	1,875 (47.65)	2,149 (54.58)	2,042 (51.88)	.172 (4.37)
71661-5068	68	.062±.006 (1.57±0.15)	1,650 (41.91)	1,875 (47.65)	2,149 (54.58)	2,042 (51.88)	.118 (3.00)
71661-5060	60	.062±.006 (1.57±0.15)	1,450 (36.83)	1,676 (42.57)	1,949 (49.50)	1,842 (46.80)	.118 (3.00)
71661-5050	50	.062±.006 (1.57±0.15)	1,200 (30.48)	1,426 (36.22)	1,699 (43.15)	1,592 (40.45)	.118 (3.00)
71661-5040	40	.062±.006 (1.57±0.15)	.950 (24.13)	1,176 (29.87)	1,449 (36.80)	1,342 (34.10)	.118 (3.00)
71661-5031	30	.116±.006 (2.95±0.15)	.700 (17.78)	.925 (23.52)	1,199 (30.45)	1,092 (27.75)	.172 (4.37)
71661-5030	30	.062±.006 (1.57±0.15)	.700 (17.78)	.925 (23.52)	1,199 (30.45)	1,092 (27.75)	.118 (3.00)

ITEM NUMBER	CIRCUIT SIZE	RECOMMENDED CIRCUIT BOARD THICKNESS	A	B	C	D	E
-------------	--------------	-------------------------------------	---	---	---	---	---

MFG. SH. REV. LTR. REVISIONS

SALES ASSEMBLY  
MOLEX EBBI 500 SMT  
PLUG CONNECTOR

MOLEX INCORPORATED

SEE TABLE

SDA-71661-5\*\*\*

NO DRAWING CONTAINS INFORMATION THAT IS PROPRIETARY TO MOLEX INC. AND SHOULD NOT BE USED WITHOUT WRITTEN PERMISSION.