

- NOTES:**
- 1) **MATERIALS:**
HOUSING- LIQUID CRYSTAL POLYMER (LCP), GLASS FILLED, UL 94V-0, BLACK.
TERMINALS- COPPER ALLOY
ESD METAL PEGS- COPPER ALLOY.
 - 2) **PLATING OPTION 1:**
TERMINALS:
.000030/(0.00076) MINIMUM GOLD IN CONTACT AREA AND
.000100/(0.00254) MINIMUM TIN IN TAIL AREA OVER NICKEL UNDERPLATING OVERALL.
ESD METAL PEGS:
.000150/(0.00381) MINIMUM TIN OVER NICKEL UNDERPLATING OVERALL.
 - 3) **PLATING OPTION 2:**
TERMINALS: GOLD FLASH IN SELECT CONTACT AREA OVER .000030/(0.00076) MINIMUM PALLADIUM NICKEL IN CONTACT AREA AND .000075/(0.00191) MINIMUM TIN IN TAIL AREA OVER NICKEL UNDERPLATING OVERALL.
ESD METAL PEGS:
.000150/(0.00381) MINIMUM TIN OVER NICKEL UNDERPLATING OVERALL.
 - 4) CONFORMS TO PRODUCT SPECIFICATION PS-73826-0000.
 - 5) CIRCUIT NUMBERS 21 THRU 23, 26, 29, 32, 35 THRU 40, ARE ADVANCED (LONG) TERMINALS FOR SEQUENTIAL MATING.
 - 6) CONNECTOR WILL ACCEPT MATING TO A P.C. BOARD WITH A THICKNESS OF .062±.003 (1.60±0.08).
 - 7) SEE TABLE FOR RECOMMENDED P.C. BOARD THICKNESS.
 - 8) PRODUCT PACKAGED PER PK-70873-083*
 - 9) FOUR DIGIT DATE CODE (WK, YR), EXAMPLE => 26 96 LOCATED IN AREA INDICATED.

J	REVISOR	ECN UCP2004-2082	REVISION	04/04/22
I	REVISOR	ECN UCP2003-0093	REVISION	02/08/13
H	REVISOR	ECN UDT 2000-1231	REVISION	02/05/97
G	REVISOR	ECN UDT999-0975	REVISION	99/05/26
F2	REVISOR	ECN UDT 999-0865	REVISION	99-04-10
F1	REVISOR	ECN UDT 1998-0294	REVISION	98/05/10
F	REVISOR	PER ECN U80654	REVISION	97-9-18
E	REVISOR	PER ECN U71495	REVISION	97-6-2
D1	REVISOR	PER ECN U70444	REVISION	96-11-26
D	REVISOR	PER ECN U61278	REVISION	5-2-96 DGA
C	REVISOR	PER ECN U60641	REVISION	11-29-95 DRS
B	REVISOR	PER ECN U60297	REVISION	9-1-95
A	REVISOR	PER ECN U60079	REVISION	8-15-95 RAN

71743-1045	SEE NOTE 3	.130±.006 (3.30±0.15)	.148 (3.75)	.118 (3.00)
71743-1044	SEE NOTE 3	.125±.003 (3.18±0.08)	.134 (3.40)	.118 (3.00)
71743-1043	SEE NOTE 3	.093±.003 (2.36±0.08)	.125 (3.18)	.118 (3.00)
71743-1042	OBSOLETE			
71743-1041	SEE NOTE 3	.062±.003 (1.60±0.08)	.110 (2.79)	.118 (3.00)
71743-1040	SEE NOTE 3	.093±.003 (2.36±0.08)	.125 (3.18)	.118 (3.00)
PART NUMBER	PLATING	PCB THICKNESS	DIM. P	DIM. A

NOTE FOR LEAD FREE CONVERSION:
THE PRIMARY SHIPPING CARTON WILL BE LABELED COMPLIANT TO ROHS DIRECTIVE 2002/95/EC AND ELV ANNEX II OF DIRECTIVE 2000/53/EC. CARTONS WITHOUT THIS LABEL MAY CONTAIN PRODUCT WITH LEAD.

SALES ASSEMBLY
EBBI VERTICAL RECEPTACLE
40 CKT FIBRE CHANNEL CONN

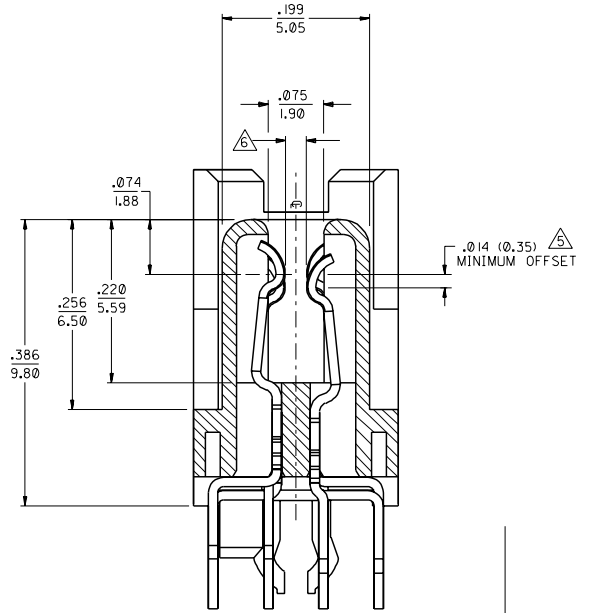
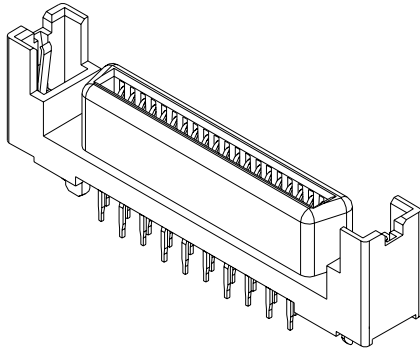
MOLEX INCORPORATED
68532

SEE TABLE SDA-71743-104*

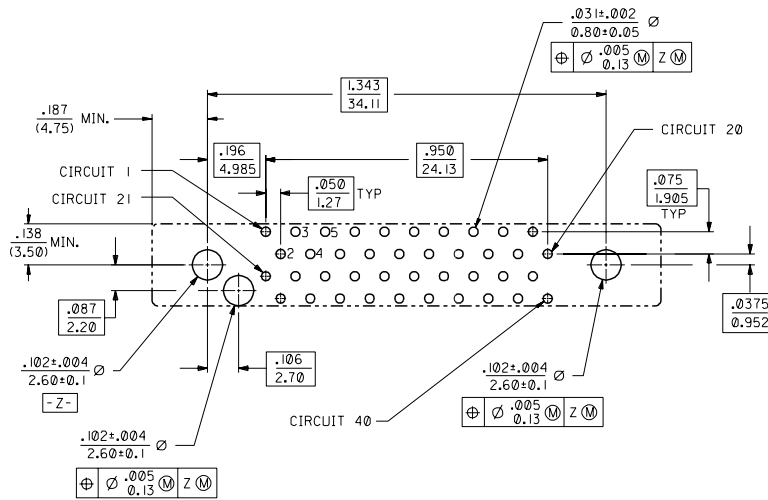
DATE: 7/21/95

REV. 1 OF 2

13 12 11 10 9 8 7 6 71743 4 3 2 1



SECTION X-X
SCALE - 10:1



RECOMMENDED PC BOARD LAYOUT Δ
COMPONENT SIDE

G	SEE SHEET 1
---	-------------

DIMENSIONS SHOWN IN METRIC INCH		REVISIONS	
UNLESS OTHERWISE SPECIFIED TOLERANCES ANGULAR 1/2°		MFG. SH.	REV. LTR.
TITLE		REVISE ONLY ON CAD SYSTEM	
SALES ASSEMBLY		DATE	
40 CKT FIBRE CHANNEL CONN		7/21/95	
MOLEX INCORPORATED		U.S.A.	
PART NO.		DRAWING NO.	
SEE TABLE		SDA-71743-104	
DRWG. BY: RAN	CHK'D. BY: RAN	FILE NAME: S71743X4	SIZE: C
APP'D. BY: CWF	SCALE: 4:1	DATE: 7/21/95	SIZE: C

13 12 11 10 9 8 7 6 5 4 3 2 1