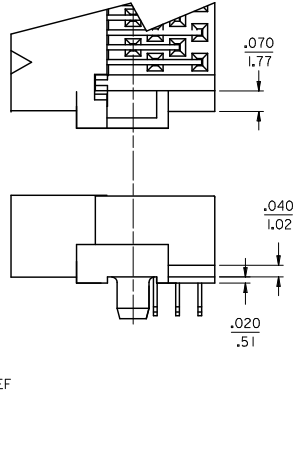
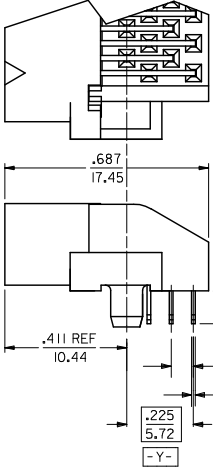
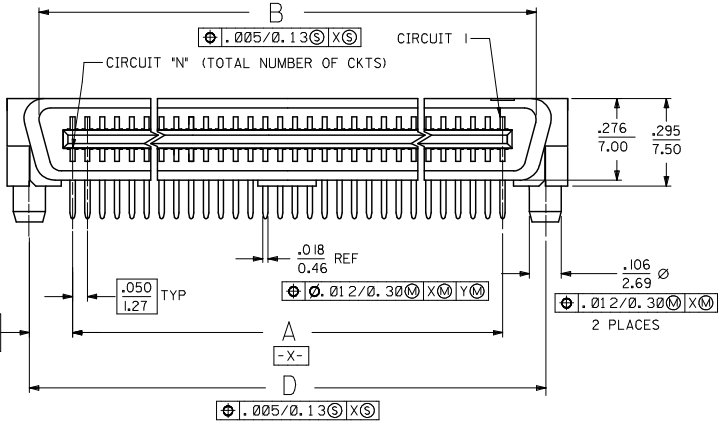
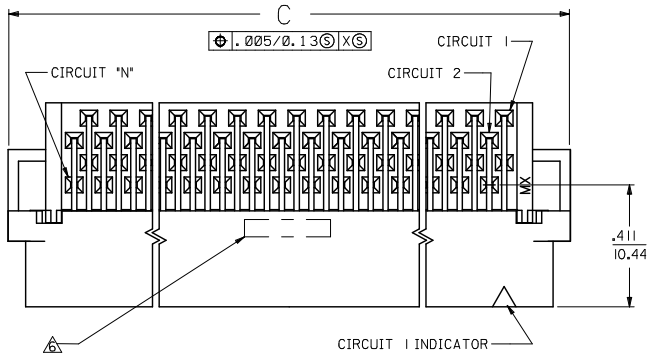


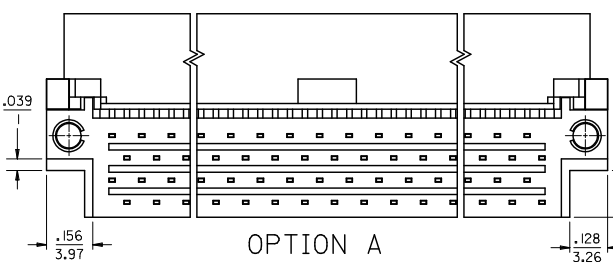
13 12 11 10 9 8 7 6 5 4 3 2 1

NOTES:
 1. MATERIAL:
 HOUSING: LIQUID CRYSTAL POLYMER (LCP), GLAS-FILLED, UL 94V-0,
 COLOR: BLASK
 TERMINALS: BRASS
 2. FINISH:
 TERMINAL: 0.76 MICROMETERS/30 MICROINCHES MINIMUM SELECTIVE GOLD
 IN CONTACT AREA, 1.27 MICROMETERS/50 MICROINCHES MINIMUM
 SELECTIVE TIN IN THE PC TAIL AREA, NICKEL UNDERPLATE OVERALL
 3. ASSEMBLY MATES WITH MOLEX P/N SDA-71660-****
 4. CONFORMS TO PRODUCT SPEC: PS-71660
 ▲ RECOMMENDED PC BOARD THICKNESS IS .062/1.60
 ▲ FOUR DIGIT DATE CODE (WK.YR) EXAMPLE 26 96 LOCATED IN AREA SHOWN
 ▲ TOOLING STATUS: "X" INDICATES NO TOOLING AVAILABLE
 CONTACT FACTORY FOR FURTHER INFORMATION



END DETAIL
 OPTION A
 (BOTH ENDS)

END DETAIL
 OPTION B
 (BOTH ENDS)



OPTION A

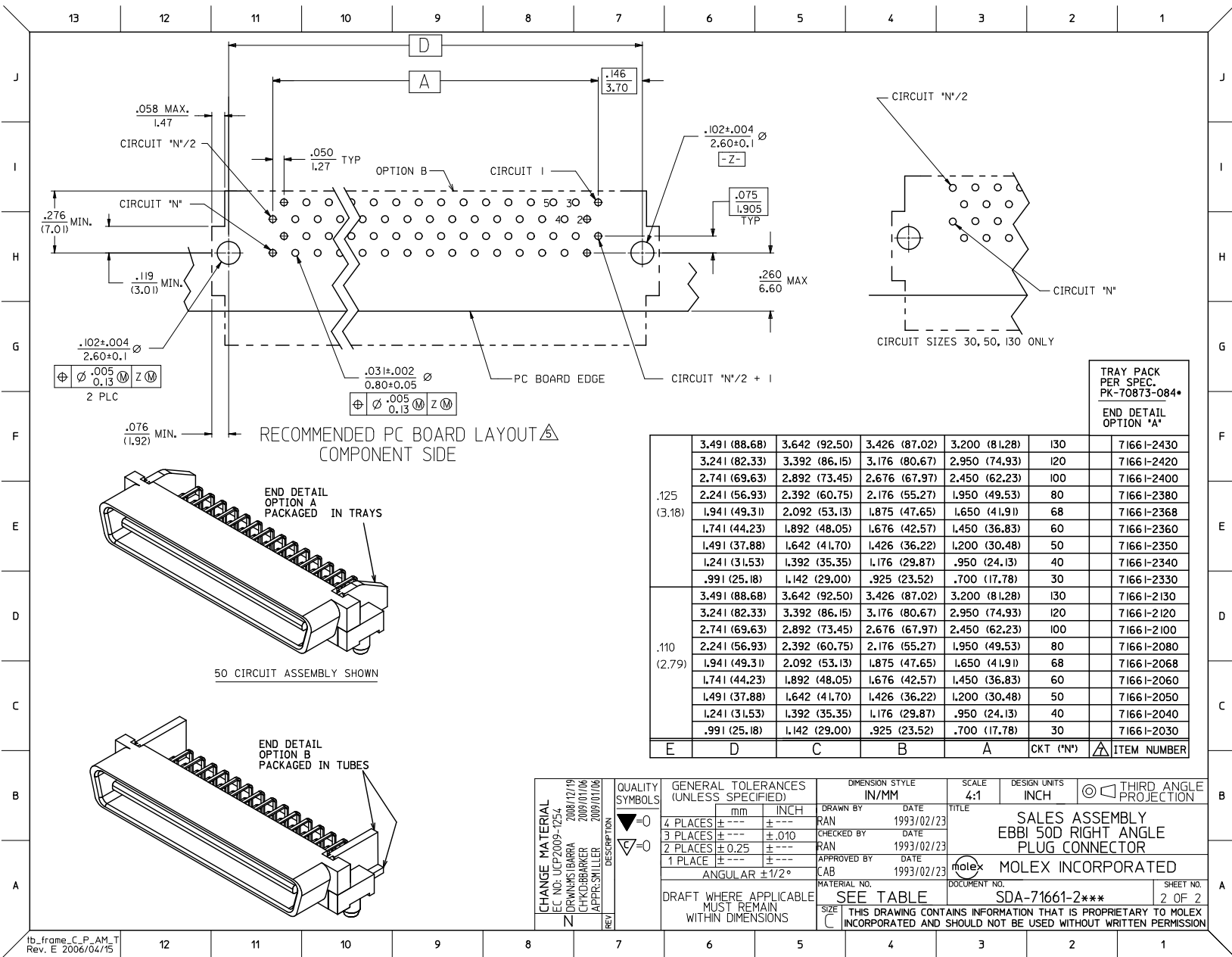
CHANGE MATERIAL	2008/12/19
EC NO.	2009/01/06
DRINKS BARRA	2009/01/06
CHROBARKER	2009/01/06
APPR: SHILLER	
REV	

QUALITY SYMBOLS	DESCRIPTION
▽=0	
▽=0	

GENERAL TOLERANCES (UNLESS SPECIFIED)	DIMENSION STYLE
4 PLACES ± .10	IN/MM
3 PLACES ± .15	
2 PLACES ± .25	
1 PLACE ± .50	
ANGULAR ± 1/2°	

SCALE	DESIGN UNITS	THIRD ANGLE PROJECTION
4:1	INCH	
DRAWN BY: RAN DATE: 1993/02/23		
CHECKED BY: RAN DATE: 1993/02/23		
APPROVED BY: CAB DATE: 1993/02/23		
MATERIAL NO. SDA-71661-2***		SHEET NO. 1 OF 2

12 11 10 9 8 7 6 5 4 3 2 1

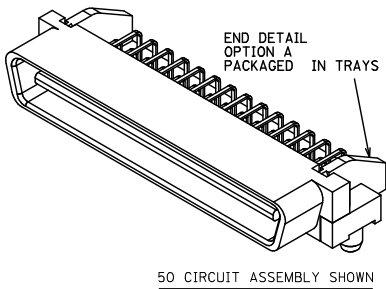


TRAY PACK
PER SPEC.
PK-70873-084*

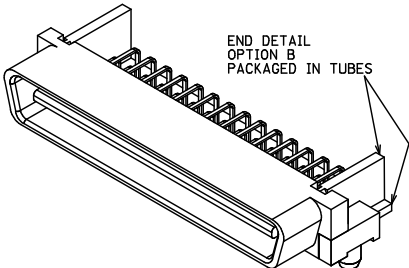
END DETAIL
OPTION "A"

CIRCUIT SIZES 30, 50, 130 ONLY	CIRCUIT SIZES 30, 50, 130 ONLY					CTK ('N')	ITEM NUMBER
	30	50	100	120	130		
.125 (3.18)	3.491 (88.68)	3.642 (92.50)	3.426 (87.02)	3.200 (81.28)	130		71661-2430
	3.241 (82.33)	3.392 (86.15)	3.176 (80.67)	2.950 (74.93)	120		71661-2420
	2.741 (69.63)	2.892 (73.45)	2.676 (67.97)	2.450 (62.23)	100		71661-2400
	2.241 (56.93)	2.392 (60.75)	2.176 (55.27)	1.950 (49.53)	80		71661-2380
	1.941 (49.31)	2.092 (53.13)	1.875 (47.65)	1.650 (41.91)	68		71661-2368
	1.741 (44.23)	1.892 (48.05)	1.676 (42.57)	1.450 (36.83)	60		71661-2360
.110 (2.79)	1.491 (37.88)	1.642 (41.70)	1.426 (36.22)	1.200 (30.48)	50		71661-2350
	1.241 (31.53)	1.392 (35.35)	1.176 (29.87)	.950 (24.13)	40		71661-2340
	.991 (25.18)	1.142 (29.00)	.925 (23.52)	.700 (17.78)	30		71661-2330
	3.491 (88.68)	3.642 (92.50)	3.426 (87.02)	3.200 (81.28)	130		71661-2130
	3.241 (82.33)	3.392 (86.15)	3.176 (80.67)	2.950 (74.93)	120		71661-2120
	2.741 (69.63)	2.892 (73.45)	2.676 (67.97)	2.450 (62.23)	100		71661-2100
.110 (2.79)	2.241 (56.93)	2.392 (60.75)	2.176 (55.27)	1.950 (49.53)	80		71661-2080
	1.941 (49.31)	2.092 (53.13)	1.875 (47.65)	1.650 (41.91)	68		71661-2068
	1.741 (44.23)	1.892 (48.05)	1.676 (42.57)	1.450 (36.83)	60		71661-2060
	1.491 (37.88)	1.642 (41.70)	1.426 (36.22)	1.200 (30.48)	50		71661-2050
	1.241 (31.53)	1.392 (35.35)	1.176 (29.87)	.950 (24.13)	40		71661-2040
	.991 (25.18)	1.142 (29.00)	.925 (23.52)	.700 (17.78)	30		71661-2030
E	D	C	B	A			

RECOMMENDED PC BOARD LAYOUT
COMPONENT SIDE



50 CIRCUIT ASSEMBLY SHOWN



END DETAIL
OPTION B
PACKAGED IN TUBES

CHANGE MATERIAL EC NO. UCP2009-1254 2008/12/19 DRAWN BY IBARRA 2009/01/06 CHKD:BARBER 2009/01/06 APPR:SMILLER	QUALITY SYMBOLS ▽=0 ▽=0	GENERAL TOLERANCES (UNLESS SPECIFIED)		DIMENSION STYLE IN/MM		SCALE 4:1	DESIGN UNITS INCH	THIRD ANGLE PROJECTION
		4 PLACES ±--- ±--- 3 PLACES ±--- ±.010 2 PLACES ±0.25 ±--- 1 PLACE ±--- ±---	mm INCH --- --- --- --- --- --- --- ---	DRAWN BY RAN	DATE 1993/02/23	TITLE SALES ASSEMBLY EBBI 50D RIGHT ANGLE PLUG CONNECTOR		
		ANGULAR ±1/2°		CHECKED BY RAN	DATE 1993/02/23	MOLEX INCORPORATED		
		DRAFT WHERE APPLICABLE MUST REMAIN WITHIN DIMENSIONS		APPROVED BY CAB	DATE 1993/02/23	MATERIAL NO. SEE TABLE	DOCUMENT NO. SDA-71661-2***	