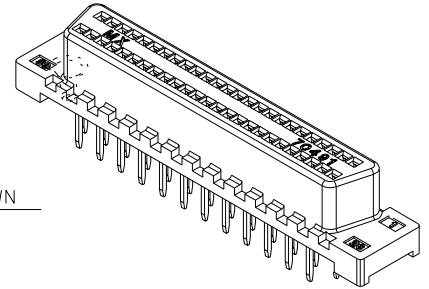
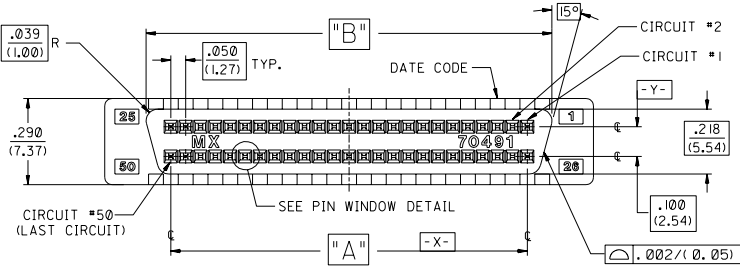
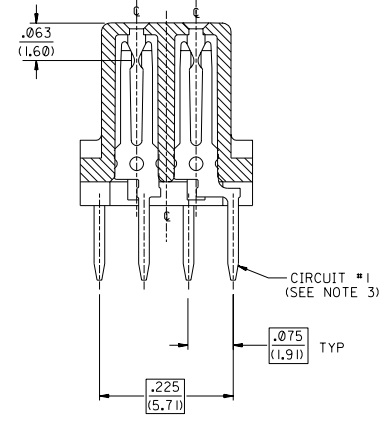
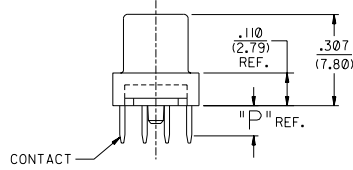
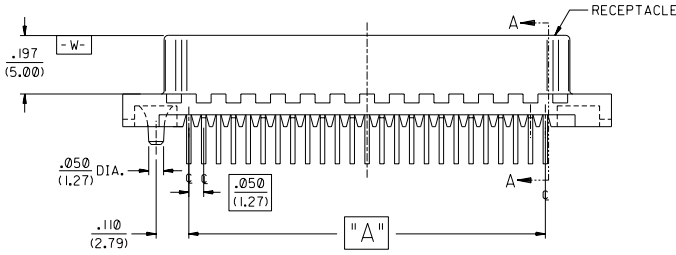


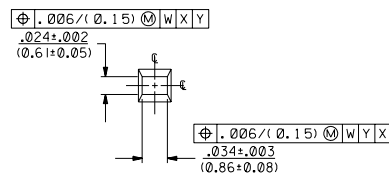
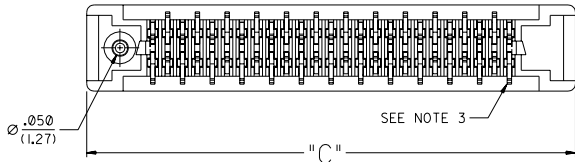
13 12 11 10 9 8 7 6 5 4 3 2 1



50 CIRCUIT SHOWN



SECTION "A-A"  
SCALE 8:1



PIN WINDOW DETAIL  
SCALE 10:1

**NOTES:**

- SEE SHEET 2 FOR PART NO.S AND CHARTED DIMENSIONS AND P.C. BOARD LAYOUT.
- 50 CIRCUIT SHOWN FOR ILLUSTRATION PURPOSES ONLY.
- TAIL PATTERN FIXED AT CIRCUIT NO. (1) POSITION FOR ALL CIRCUIT SIZES SHOWN.

2	I
1	I
MFG. SH. REV.	

ADD LEADFREE NOTE ECR# UCP2004-1925 DMORCAN 04/04/02		DIMENSIONS SHOWN METRIC/INCH UNLESS OTHERWISE SPECIFIED TOLERANCES ANGULAR ± 1/32"		REVISION ONLY ON CAD SYSTEM	
ADDED 70491-2014 EDP# 015870314 PER EC #JDT 1999-0247 J. LONG 98/11/04		INCH METRIC 3 PLACE ± .010 --- 2 PLACE ± --- ± 0.25 1 PLACE --- ± ---		TITLE SALES SCSI ALL-PLASTIC VERTICAL RECEPTACLE ASSEMBLY WITH PEG	
ADDED PART NUMBER A-70491-2013 PER EC #JDT 1998-0019 J. LONG 98/03/02		DRAFT WHERE APPLICABLE MUST REMAIN WITHIN DIMENSIONS		MOLEX INCORPORATED SHEET NO. DATE LITTLE FALL, ILL. U.S.A. 1 of 2 06/17/92	
LTR. REVISIONS		LTR. REVISIONS		PART NO. DRWG. NO. SEE SHEET 2 SDA-70491-2***	
APPR. J D		CHKD. BY DCB		FILE NAME S7049121 JON	
		SCALE 4:1		NO DRAWING CONTAINS INFORMATION THAT IS PROPRIETARY TO MOLEX INC. AND SHOULD NOT BE USED WITHOUT WRITTEN PERMISSION. TC	

13 12 11 10 9 8 7 6 5 4 3 2 1

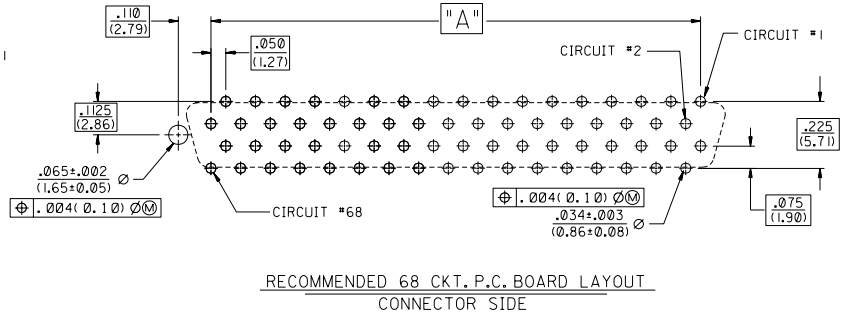
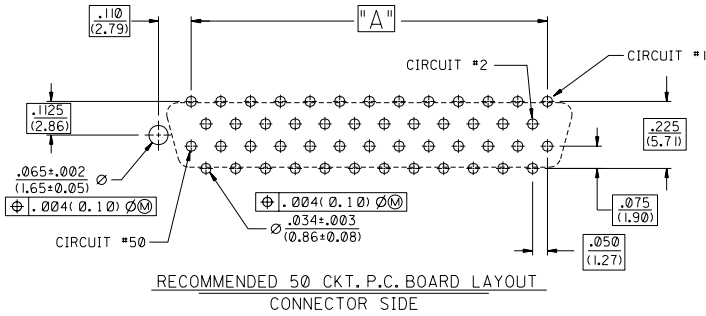
ITEM NO.	ENG NO.	CKT. SIZE	PLATING	DIM. A		DIM. B		DIM. C		DIM. P TAIL LENGTH	RECOMMENDED PCB	
				INCH	MM	INCH	MM	INCH	MM		INCH	MM
		50	GOLD 30	1.200	30.48	1.366	34.70	1.645	41.78	.125	.062 OR .093	1.57 OR 2.36
X	015-87-0301	70491-2001									OR	
		50	GOLD 30	1.200	30.48	1.366	34.70	1.645	41.78	.165	.125	3.18
X	015-87-0302	70491-2002									OR	
		68	GOLD 30	1.650	41.91	1.816	46.13	2.095	53.21	.125	.062 OR .093	1.57 OR 2.36
X	015-87-0303	70491-2003									OR	
		68	GOLD 30	1.650	41.91	1.816	46.13	2.095	53.21	.165	.125	3.18
X	015-87-0304	70491-2004									OR	
		50	GOLD 30	1.200	30.48	1.366	34.70	1.645	41.78	.080	.062	1.57
X	015-87-0305	70491-2005									OR	
		50	GOLD 30	1.200	30.48	1.366	34.70	1.645	41.78	.080	.062	1.57
X	015-87-0306	70491-2006									OR	
		68	GOLD 30	1.650	41.91	1.816	46.13	2.095	53.21	.125	.062 OR .093	1.57 OR 2.36
X	015-87-0307	70491-2007									OR	
		68	GOLD 30	1.650	41.91	1.816	46.13	2.095	53.21	.165	.125	3.18
X	015-87-0308	70491-2008									OR	
		50	GOLD 30	1.200	30.48	1.366	34.70	1.645	41.78	.080	.062	1.57
X	015-87-0309	70491-2009									OR	
		68	GOLD 30	1.650	41.91	1.816	46.13	2.095	53.21	.125	.062 OR .093	1.57 OR 2.36
X	015-87-0310	70491-2010									OR	
		68	GOLD 30	1.650	41.91	1.816	46.13	2.095	53.21	.080	.062	1.57
X	015-87-0311	70491-2011									OR	
		50	GOLD 30	1.200	30.48	1.366	34.70	1.645	41.78	.080	.062	1.57
X	015-87-0312	70491-2012									OR	
		68	GOLD 15	1.650	41.91	1.816	46.13	2.095	53.21	.125	.062 OR .093	1.57 OR 2.36
X	015-87-0313	70491-2013									OR	
		68	GOLD 15	1.650	41.91	1.816	46.13	2.095	53.21	.080	.062	1.57

X = INDICATED "NOT TOOLED"

ASSEMBLY NO. LEGEND:

A-70491-2 \*\*\*

CIRCUIT SIZE, PLATING, AND TAIL LENGTH  
LEFT PEG OPTION



NOTES:

- REFER TO PS-79058 PRODUCT SPEC. FOR ELECTRICAL, MECHANICAL AND ENVIRONMENTAL SPECIFICATIONS.
- MATERIAL:  
RECEPTACLE HOUSING: GLASS FILLED LIDUID CRYSTAL POLYMER (LCP);  
COLOR: BLACK; UL 94V-0  
CONTACTS: PHOSPHOR BRONZE
- PACKAGING:  
PARTS PACKAGED IN TUBES PER PK-70873-0427.
- FINISHES: TERMINALS:  
(GOLD 15)  
SELECTIVE GOLD: THICKNESS= 15 MICROINCHES/(0.38 MICROMETERS) MINIMUM.  
SELECTIVE TIN: THICKNESS= 75 MICROINCHES/(1.90 MICROMETERS) MINIMUM.  
NICKEL UNDERPLATE OVERALL.

NOTE FOR LEAD FREE CONVERSION:

THE PRIMARY SHIPPING CARTON WILL BE LABELED "COMPLIANT TO ROHS DIRECTIVE 2002/95/EC AND ELV ANNEX II OF DIRECTIVE 2000/53/EC". CARTONS WITHOUT THIS LABEL MAY CONTAIN PRODUCT WITH LEAD.

MFG.		SH.	REV.
I	SEE SHEET I		
H	SEE SHEET I		
G	SEE SHEET I		
LTR.	REVISIONS	LTR.	REVISIONS

DIMENSIONS SHOWN METRIC INCH		TOLERANCES ANGULAR 1/32"		REVISION ONLY ON CAD SYSTEM	
INCH	METRIC				
3 PLACE ± .010	---				
2 PLACE ± ---	± 0.25				
1 PLACE ---	± ---				

TITLE: SALES SCSI ALL-PLASTIC VERTICAL RECEPTACLE ASSEMBLY WITH PEG  
 PART NO.: 115LEJLL  
 MOLEX INCORPORATED 68532  
 SHEET NO.: 2  
 DATE: 06/17/92  
 FILE NAME: S1849 I22 DCB  
 THIS DRAWING CONTAINS INFORMATION THAT IS PROPRIETARY TO MOLEX INC. AND SHOULD NOT BE USED WITHOUT WRITTEN PERMISSION.