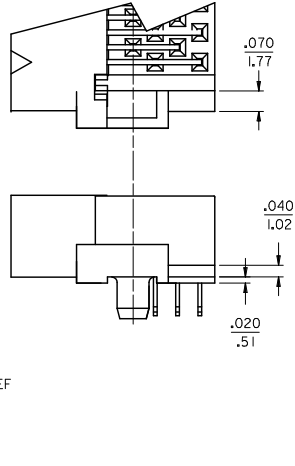
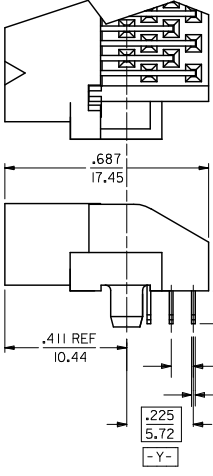
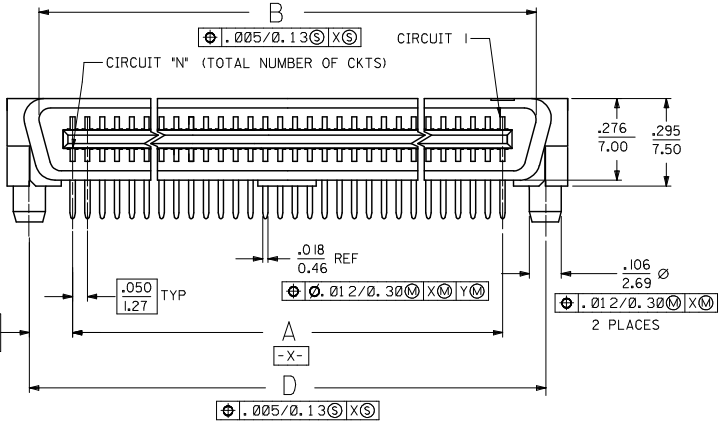
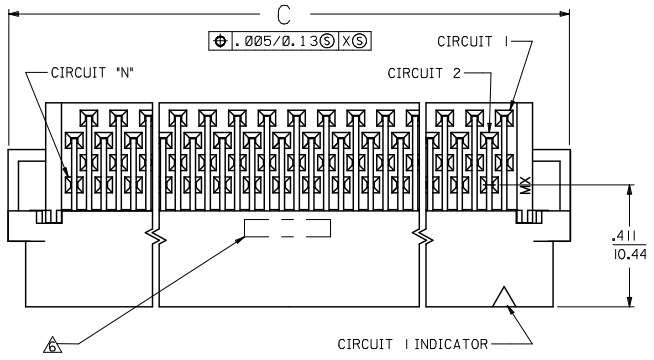


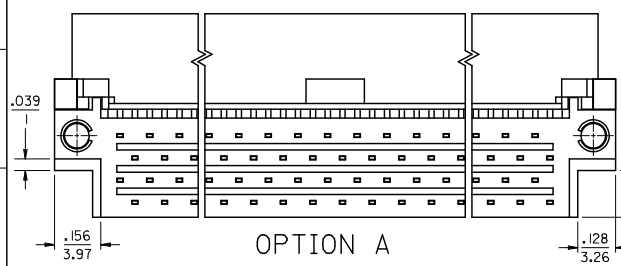
13 12 11 10 9 8 7 6 5 4 3 2 1

NOTES:  
 1. MATERIAL:  
 HOUSING: LIQUID CRYSTAL POLYMER (LCP), GLAS-FILLED, UL 94V-0,  
 COLOR: BLASK  
 TERMINALS: BRASS  
 2. FINISH:  
 TERMINAL: 0.76 MICROMETERS/30 MICROINCHES MINIMUM SELECTIVE GOLD  
 IN CONTACT AREA, 1.27 MICROMETERS/50 MICROINCHES MINIMUM  
 SELECTIVE TIN IN THE PC TAIL AREA, NICKEL UNDERPLATE OVERALL  
 3. ASSEMBLY MATES WITH MOLEX P/N SDA-71660-\*\*\*\*  
 4. CONFORMS TO PRODUCT SPEC: PS-71660  
 ▲ RECOMMENDED PC BOARD THICKNESS IS .062/1.60  
 ▲ FOUR DIGIT DATE CODE (WK.YR) EXAMPLE 26 96 LOCATED IN AREA SHOWN  
 ▲ TOOLING STATUS: "X" INDICATES NO TOOLING AVAILABLE  
 CONTACT FACTORY FOR FURTHER INFORMATION



END DETAIL  
 OPTION A  
 (BOTH ENDS)

END DETAIL  
 OPTION B  
 (BOTH ENDS)



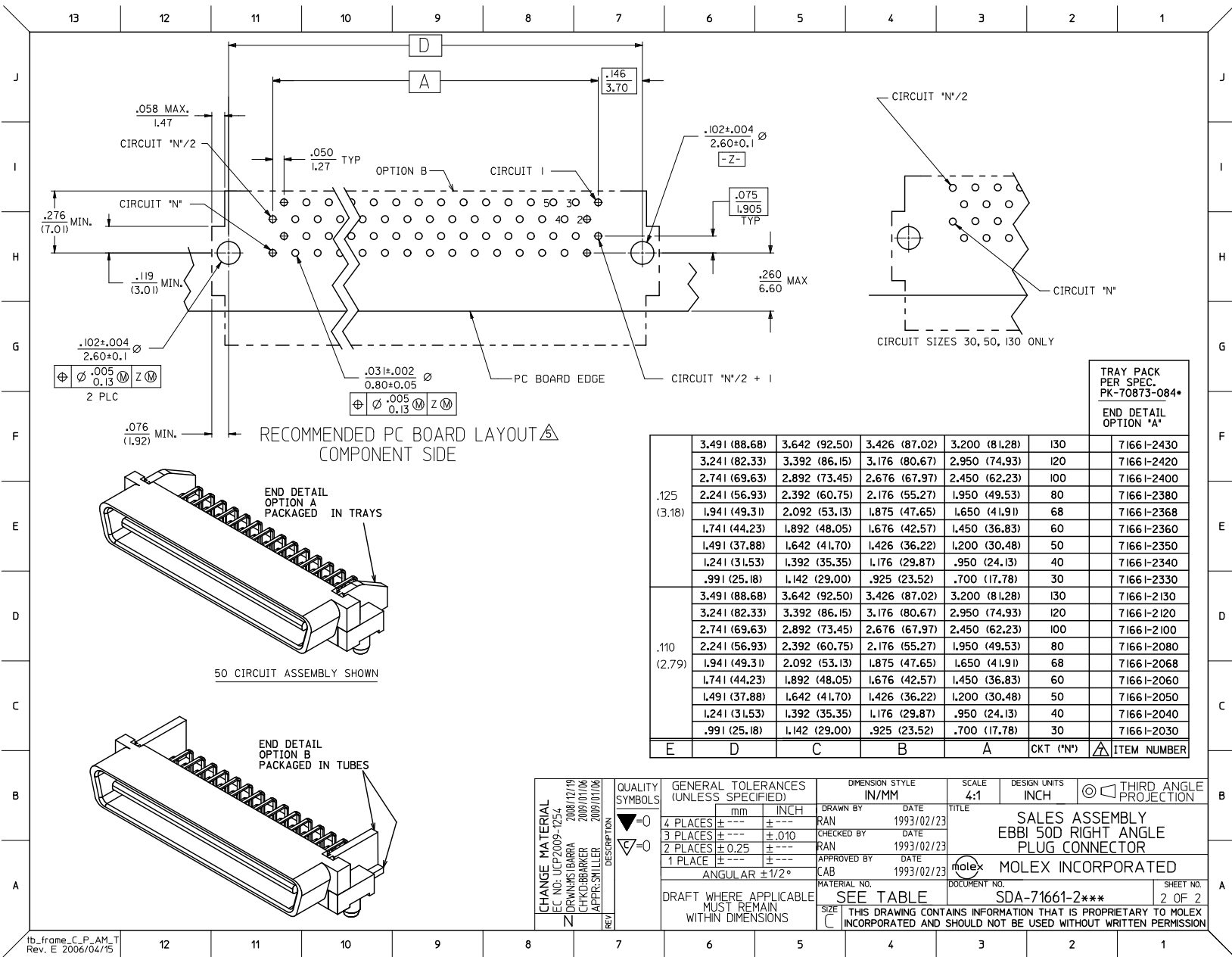
OPTION A

CHANGE MATERIAL	2008/12/19
EC NO.	2009/01/06
DRINKS BARRA	2009/01/06
CHROBARKER	2009/01/06
APPR: SHILLER	
REV	

QUALITY SYMBOLS	DESCRIPTION
▽=0	
▽=0	

GENERAL TOLERANCES (UNLESS SPECIFIED)	DIMENSION STYLE
4 PLACES ± .10	IN/MM
3 PLACES ± .15	
2 PLACES ± .25	
1 PLACE ± .50	
ANGULAR ± 1/2°	

SCALE	DESIGN UNITS	THIRD ANGLE PROJECTION
4:1	INCH	
DRAWN BY: RAN DATE: 1993/02/23		
CHECKED BY: RAN DATE: 1993/02/23		
APPROVED BY: CAB DATE: 1993/02/23		
MATERIAL NO. SDA-71661-2***		SHEET NO. 1 OF 2

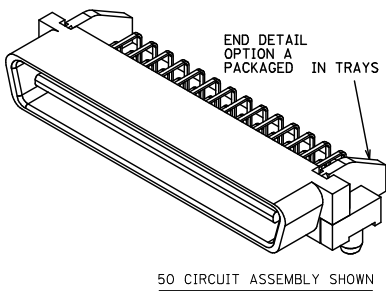


TRAY PACK  
PER SPEC.  
PK-70873-084\*

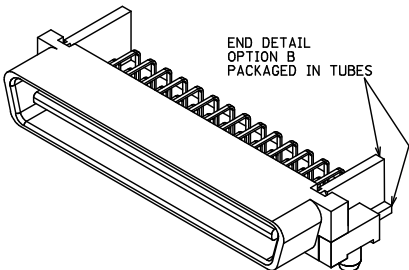
END DETAIL  
OPTION "A"

CIRCUIT SIZES 30, 50, 130 ONLY	CIRCUIT SIZES 30, 50, 130 ONLY					CTK ('N')	ITEM NUMBER
	30	50	100	120	130		
.125 (3.18)	3.491 (88.68)	3.642 (92.50)	3.426 (87.02)	3.200 (81.28)	130		71661-2430
	3.241 (82.33)	3.392 (86.15)	3.176 (80.67)	2.950 (74.93)	120		71661-2420
	2.741 (69.63)	2.892 (73.45)	2.676 (67.97)	2.450 (62.23)	100		71661-2400
	2.241 (56.93)	2.392 (60.75)	2.176 (55.27)	1.950 (49.53)	80		71661-2380
	1.941 (49.31)	2.092 (53.13)	1.875 (47.65)	1.650 (41.91)	68		71661-2368
	1.741 (44.23)	1.892 (48.05)	1.676 (42.57)	1.450 (36.83)	60		71661-2360
.110 (2.79)	1.491 (37.88)	1.642 (41.70)	1.426 (36.22)	1.200 (30.48)	50		71661-2350
	1.241 (31.53)	1.392 (35.35)	1.176 (29.87)	.950 (24.13)	40		71661-2340
	.991 (25.18)	1.142 (29.00)	.925 (23.52)	.700 (17.78)	30		71661-2330
	3.491 (88.68)	3.642 (92.50)	3.426 (87.02)	3.200 (81.28)	130		71661-2130
	3.241 (82.33)	3.392 (86.15)	3.176 (80.67)	2.950 (74.93)	120		71661-2120
	2.741 (69.63)	2.892 (73.45)	2.676 (67.97)	2.450 (62.23)	100		71661-2100
.110 (2.79)	2.241 (56.93)	2.392 (60.75)	2.176 (55.27)	1.950 (49.53)	80		71661-2080
	1.941 (49.31)	2.092 (53.13)	1.875 (47.65)	1.650 (41.91)	68		71661-2068
	1.741 (44.23)	1.892 (48.05)	1.676 (42.57)	1.450 (36.83)	60		71661-2060
	1.491 (37.88)	1.642 (41.70)	1.426 (36.22)	1.200 (30.48)	50		71661-2050
	1.241 (31.53)	1.392 (35.35)	1.176 (29.87)	.950 (24.13)	40		71661-2040
	.991 (25.18)	1.142 (29.00)	.925 (23.52)	.700 (17.78)	30		71661-2030

RECOMMENDED PC BOARD LAYOUT  
COMPONENT SIDE



50 CIRCUIT ASSEMBLY SHOWN



END DETAIL  
OPTION B  
PACKAGED IN TUBES

<b>CHANGE MATERIAL</b> EC NO. UCP2009-1254 2008/12/19 DRAWN BY IBARRA 2009/01/06 CHKD:BARBER 2009/01/06 APPR:SMILLER	<b>QUALITY SYMBOLS</b> ▽=0 ▽=0	<b>GENERAL TOLERANCES (UNLESS SPECIFIED)</b>		<b>DIMENSION STYLE</b> IN/MM		SCALE 4:1	DESIGN UNITS INCH	THIRD ANGLE PROJECTION	
		4 PLACES ±--- ±--- 3 PLACES ±--- ±.010 2 PLACES ±0.25 ±--- 1 PLACE ±--- ±---	mm INCH	DRAWN BY RAN	DATE 1993/02/23	TITLE SALES ASSEMBLY EBBI 50D RIGHT ANGLE PLUG CONNECTOR			
		ANGULAR ±1/2°	DRAFT WHERE APPLICABLE MUST REMAIN WITHIN DIMENSIONS	CHECKED BY RAN	DATE 1993/02/23	MOLEX INCORPORATED			
		MATERIAL NO. SDA-71661-2***	DOCUMENT NO.	SHEET NO. 2 OF 2					