

10 9 8 7 6 5 4 3 2 1

F

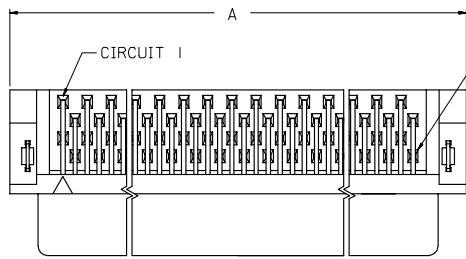
E

D

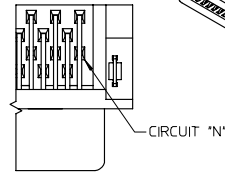
C

B

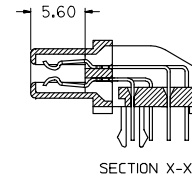
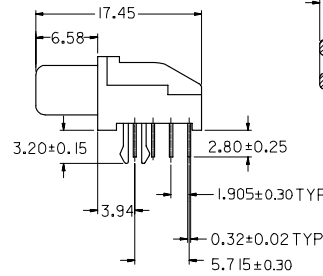
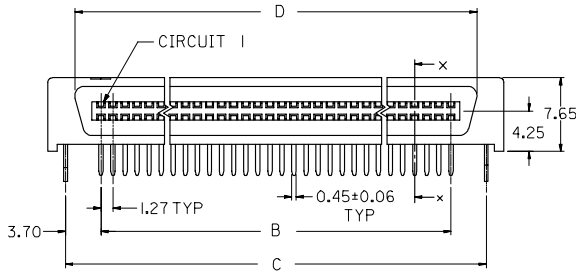
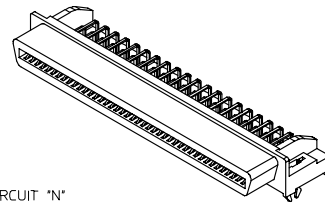
A



FOR CIRCUIT SIZES 68 AND 80 ONLY



FOR CIRCUIT SIZE 50 ONLY



NOTES:

1. MATERIAL: HOUSING -- HIGH TEMP. THERMOPLASTIC, UL94-V0  
TERMINALS -- COPPER ALLOY

2. PLATING:

2A 0.75µM MIN. GOLD IN SELECTIVE CONTACT AREA AND  
2.5µM MIN. TIN IN SOLDER TAIL AREA, BOTH  
OVER 1.27µM MIN. NICKEL.

3. ASSEMBLY MATES WITH MOLEX P/N 71661-\*\*\*\*.

4. RECOMMENDED P.C. BOARD THICKNESS IS 1.60MM.

5. PRODUCT SPEC. NO. : PS-87552-006

6. SEE TABLE ON SHEET 2 FOR ASSEMBLY PART NUMBERS.

REVISED	2007/11/12	DESCRIPTION
EC NO. S2008-0347	2007/11/12	
DRW:SKANG	2007/11/12	
CHK:WATSEE	2007/11/12	
APP:HLONG	2007/11/12	
H3		

QUALITY SYMBOLS
▽=0
▽=0

GENERAL TOLERANCES (UNLESS SPECIFIED)	
PLACES	TOLERANCE
4 PLACES	± 0.15
3 PLACES	± 0.20
2 PLACES	± 0.30
1 PLACE	± 0.40
ANGULAR ± 3°	
DRAFT WHERE APPLICABLE MUST REMAIN WITHIN DIMENSIONS	

DIMENSION STYLE	
MM ONLY	
DRAWN BY	DATE
DSOH	1997/04/01
CHECKED BY	DATE
XCLING	1997/05/06
APPROVED BY	DATE
SKTOH	1997/05/08
MATERIAL NO.	
SEE TABLE	
SIZE A3	

SCALE	DESIGN UNITS	THIRD ANGLE PROJECTION
NTS	METRIC	
TITLE		
EBBI, 1.27MM PITCH RECEPTACLE, R/A		
MOLEX INCORPORATED		
MATERIAL NO.	DOCUMENT NO.	SHEET NO.
SD-87552-007		1 OF 2
THIS DRAWING CONTAINS INFORMATION THAT IS PROPRIETARY TO MOLEX INCORPORATED AND SHOULD NOT BE USED WITHOUT WRITTEN PERMISSION		

fb\_frame\_A3\_P\_AM\_T  
Rev. E 2006/04/15

9 8 7 6 5 4 3 2 1

F

E

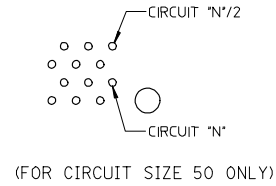
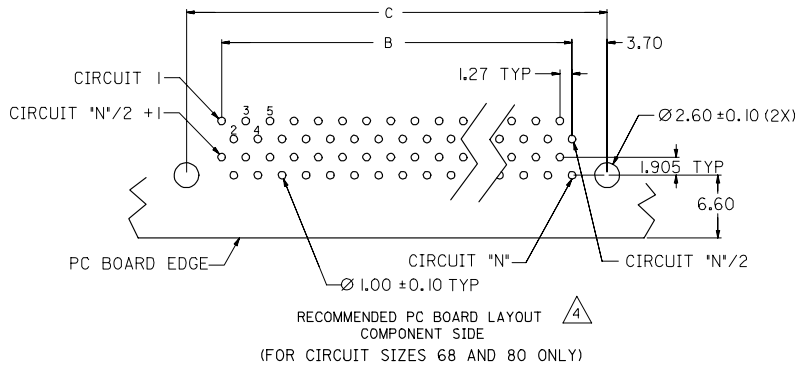
D

C

B

A

	10	9	8	7	6	5	4	3	2	1
F	D	C	B	A	CKT SIZE	ASSEMBLY PART NUMBER				
	36.02	37.88	30.48	41.70	50	87552-0507				
	47.45	49.31	41.91	53.13	68	87552-0687				
	55.07	56.93	49.53	60.75	80	87552-0807				



REVISED DEC. NO. S2008-0347 DRAWN: SKANG CHECKED: SEE APPROVED: HONG	2007/11/12 2007/11/12 2007/11/12	QUALITY SYMBOLS ▽=0 ▽=0	GENERAL TOLERANCES (UNLESS SPECIFIED)		DIMENSION STYLE MM ONLY		SCALE NTS	DESIGN UNITS METRIC	THIRD ANGLE PROJECTION	
			mm	INCH	DRAWN BY DSOH	DATE 1997/04/01	TITLE EBBI, 1.27MM PITCH RECEPTACLE, R/A			
			4 PLACES ± ---	± ---	CHECKED BY KCLING	DATE 1997/05/06				
			3 PLACES ± ---	± ---	APPROVED BY SKTOH	DATE 1997/05/08	MOLEX INCORPORATED			
2 PLACES ± 0.3	± ---	DRAFT WHERE APPLICABLE MUST REMAIN WITHIN DIMENSIONS		SEE TABLE		MATERIAL NO.	DOCUMENT NO. SD-87552-007	SHEET NO. 2 OF 2		
1 PLACE ± ---	± ---			SIZE A3		THIS DRAWING CONTAINS INFORMATION THAT IS PROPRIETARY TO MOLEX INCORPORATED AND SHOULD NOT BE USED WITHOUT WRITTEN PERMISSION				
ANGULAR ± 3 °										